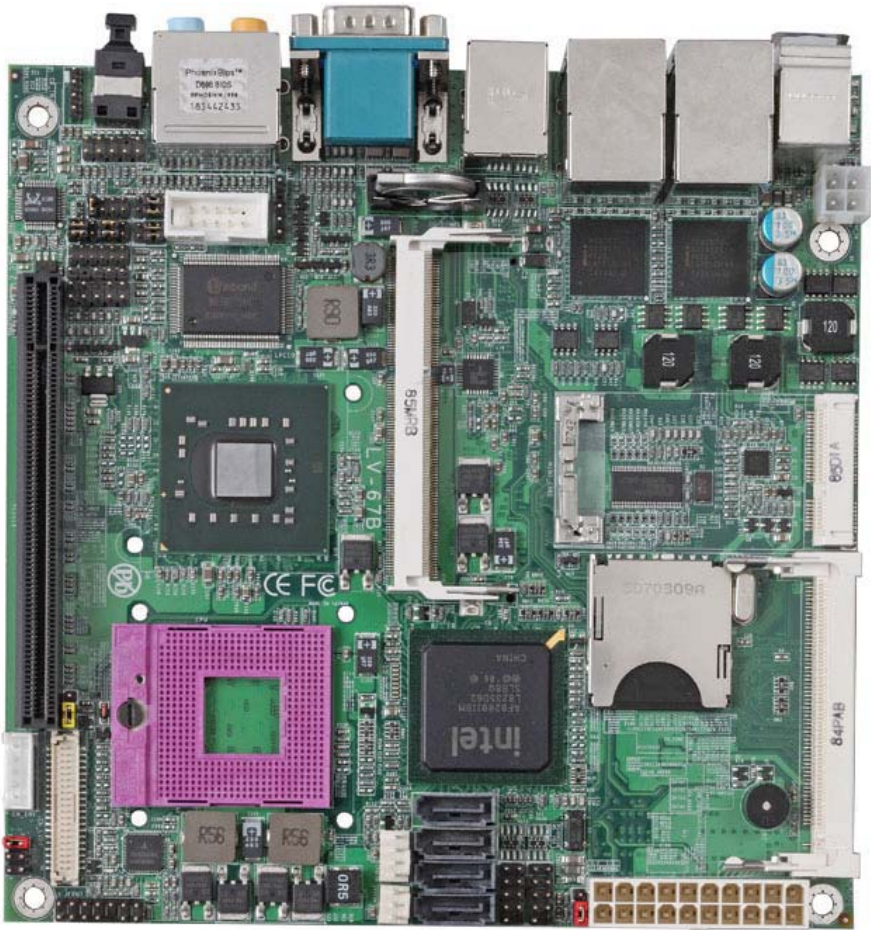


Product Test Report



Product Name	LV-67B
Product Version	C
Issued Date	13.Oct.2009
Report Edition	1.1
BIOS Version	1.3
Testing Engineer	RICK
Check Engineer	LES

REVISION HISTORY

DATE	REVISION NO.	PAGE	DESCRIPTONS
18.Nov.2008	Ver. 1.0	58	Initial Release
13.Oct.2009	Ver 1.1	77	1.Support 4GB memory 2.Support 4 kernels CPU 3.Humidity and low temperature boot up test. 4.New OS install(Windows Server 2008 / Windows 7)

Index

1. Function test	5
1.1 Hardware function.....	5
1.2 BIOS function	7
1.3 Driver	9
2. Compatibility test	11
2.1 CPU Test.....	11
2.2 Memory Test	12
2.3 VGA Graphic Quality Test.....	13
2.4 Audio	14
2.5 HDD Test	17
2.6 CD-ROM/DVD-ROM Test	18
2.7 USB Test.....	19
2.8 Serial Port Test	22
2.9 PS2 Keyboard 、 Mouse Test.....	24
2.10 LAN Test.....	26
2.11 Power Supply Test.....	27
2.12 Os Install	27
3. Environmental test	28
3.1 Temperature Test.....	28
3.2 Thermal measurements at various points on the board	31
4. Reliability Test	33
4.1 Power Consumption Test	33
5. Performance Test	47
5.1 Business Win Stone 2001.....	47
5.2 Business Win Stone 2002.....	48
5.3 Business Win Stone 2004.....	49
5.4 Content Creation Winstone 2001 (version 1.0)	50
5.5 Content Creation Winstone 2001 (version 1.0.1)	51
5.6 Content Creation Winstone 2004.....	52

5.7 3D MARK(2001、2003、2005)	53
5.8 3D MARK2006	57
5.9 PC MARK2002	61
5.10 PC MARK2004	65
5.11 PC MARK2005	69
5.12 SATA Performance	73
5.13 USB Performance	75
5.14 Vibration Test	77

1. Function test

1.1 Hardware function

Base Function Test

Item	Description	Result
1	Power Button	Pass
2	Reset	Pass
3	Power LED	Pass
4	HDD LED	Pass
5	SATA1	Pass
6	SATA2	Pass
7	SATA3	Pass
8	SATA4	Pass
9	USB1	Pass
10	USB2	Pass
11	USB3	Pass
12	USB4	Pass
13	DDRIII	Pass
14	COM1	Pass
15	COM2	Pass
16	VGA Port	Pass
17	PS2	Pass
18	AUDIO	Pass
19	CD_IN	Pass
20	SPDIF	Pass
21	Mini PCI	Pass
22	DIO	Pass
23	CPUFAN	Pass
24	SYSFAN	Pass

25	PCI-express 16x	Pass
26	PCI-express mini card	Pass
27	1394	Pass
28	LVDS	Pass
29	LAN 1	Pass
30	LAN 2	Pass
31	IrDA	Pass
32	HDTV	Pass
33	SD	Pass

Jumper

Item	Description	Result
1	JRTC	Pass
2	JCSEL1	Pass
3	JCSEL2	Pass
4	JVLCD	Pass
5	JAT	Pass
6	JP1	Pass
7	JP2	Pass

1.2 BIOS function

Item	Description	Result	Remark
1	Press 'Del' to run Setup Utility	Pass	
2	Ctrl-Alt-Del – Soft-Reboot	Pass	
3	Save & Exit Setup	Pass	
4	Date & Time Setting	Pass	
5	Quick Power On Self Test	Pass	
6	Boot Device Setting	Pass	
7	Boot Up Num Lock Status	Pass	
8	ACPI Suspend Type	Pass	
9	Halt On	Pass	
10	Onboard Serial Port	Pass	
11	USB Controller	Pass	
12	USB Keyboard Support	Pass	
13	Soft-Off by PWRBTN	Pass	
14	Power On Function	Pass	
15	ACPI Function	Pass	
16	Resume by Alarm	Pass	
17	Watch Dog Timer Select	Pass	
18	PWRON After PWR-Fail	Pass	
19	Set Supervisor Password	Pass	
20	Set User Password	Pass	
21	UART Mode Select	Pass	
22	RxD , Txd Active	Pass	
23	IR Transmission Delay	Pass	
24	UR2 duplex Mode	Pass	
25	Use IR Pins	Pass	
26	CPU Warning Temperature	Pass	

27	Shutdown Temperature	Pass	
28	RWRON After PWR-Fail	Pass	

1.3 Driver

CD Edition : ICPI 2-1.3

1. Windows XP SP2 Driver Test

Item	Description	Result	version
1	Chipset Driver	Pass	9.0.0.1008
2	VGA Driver	Pass	2.11.15.0
3	Audio Driver	Pass	5.10.0.5464
4	LAN Driver	Pass	8.2.160.0

2. Windows Server 2003 Driver Test

Item	Description	Result	version
1	Chipset Driver	Pass	8.3.1.1009
2	Audio Driver	Pass	5.10.0.5464
3	LAN Driver	Pass	10.2

3. Windows 2000 SP4

Item	Description	Result	version
1	Chipset Driver	Pass	8.3.1.1009
2	VGA Driver	Pass	9.0.2
3	Audio Driver	Pass	5.10.0.5464
4	LAN Driver	Pass	10.2

4. Windows Vista 32 bit Driver Test

Item	Description	Result	version
1	Chipset Driver	Pass	8.7.0.1007
2	VGA Driver	Pass	6.14.10.4964
3	Audio Driver	Pass	6.0.1.5473
4	LAN Driver	Pass	8.2.160.0

5. Windows Vista 64 bit Driver Test

Item	Description	Result	version
1	Chipset Driver	Pass	9.0.0.1008
2	VGA Driver	Pass	15.9.8.64.1518
3	Audio Driver	Pass	6.0.1.5473
4	LAN Driver	Pass	9.7.32.0

2. Compatibility test

2.1 CPU Test

Test environment:

OS Windows XP professional SP2

Test program : PC MARK 2005

Spec	CPU Speed	Family	Processor	FSB	L3 Size	Result
<u>SLA43</u>	2.40 GHz	Core2Duo	T7700	800 MHz	4 MB	Pass
<u>SLB47</u>	2.80 GHz	Core2Duo	T9600	1066 MHz	6 MB	Pass
<u>SLAF8</u>	2.20 GHz	Core2Duo	T7500	800 MHz	4 MB	Pass
<u>SLAYQ</u>	2.40 GHz	Core2Duo	T8300	800 MHz	3 MB	Pass
<u>SLB3R</u>	2.26 GHz	Core2Duo	P8400	1066 MHz	3MB	Pass
<u>SLB5G</u>	2.26 GHz	Core 2 Qua	Q9100	1066 MHz	12MB	Pass
<u>SLB6M</u>	2 GHz	Celeron	575	667 MHz	1 MB	Pass

2.2 Memory Test

Test environment:

OS Windows XP professional SP2

Test program : PC MARK 2005

Manufacturer	Chip	DDRII frequency	Capacity Mbytes	Memory test Source
Transcend	KN81G0846D	DDRIII 1066	1GB	Pass
Transcend	KN81G0846D	DDRIII 1066	2GB	Pass
A-DATA	K481G0846D	DDRIII 1066	1GB	Pass
A-DATA	K481G0846D	DDRIII 1066	2GB	Pass
Kingston	K4B2G0846B-HCFB	DDRIII 1066	4GB	Pass

2.3 VGA Graphic Quality Test

Test environment:

OS Windows XP professional SP2

Driver version : 2.11.15.0

Resolution	Color	Result	Remark
800*600	16 /32bit	Pass	
1024*768	16 /32bit	Pass	
1152*864	16 /32bit	Pass	
1280*600	16 /32bit	Pass	
1280*720	16 /32bit	Pass	
1280*768	16 /32bit	Pass	
1280*960	16 /32bit	Pass	
1280*1024	16 /32bit	Pass	
1400*1050	16 /32bit	Pass	
1600*900	16 /32bit	Pass	
1600*1200	16 /32bit	Pass	
1680*1050	16 /32bit	Pass	
1792*1344	16 /32bit	Pass	
1920*1080	16 /32bit	Pass	

2.4 Audio

Test environment:

OS Windows XP professional SP2

Driver version : 5.10.0.5464

Item	Description	Result	
1	2 CH	Pass	
2	4 CH	Pass	
3	5.1 CH	Pass	
4	7.1 CH	Pass	
5	Microphone	Pass	
6	LINE	Pass	
7	SPDIF OUT	Pass	
8	CDIN	Pass	

OS Windows Server 2003

Driver version : 5.10.0.5464

Item	Description	Result	
1	2 CH	Pass	
2	4 CH	Pass	
3	5.1 CH	Pass	
4	7.1 CH	Pass	
5	Microphone	Pass	
6	LINE	Pass	
7	SPDIF OUT	Pass	
8	CDIN	Pass	

OS Windows 2000 SP4

Driver version : 5.10.0.5464

Item	Description	Result	
1	2 CH	Pass	
2	4 CH	Pass	
3	5.1 CH	Pass	
4	7.1 CH	Pass	
5	Microphone	Pass	
6	LINE	Pass	
7	SPDIF OUT	Pass	
8	CDIN	Pass	

OS Windows Vista 32 bit

Driver version : 6.0.1.5473

Item	Description	Result	
1	2 CH	Pass	
2	4 CH	Pass	
3	5.1 CH	Pass	
4	7.1 CH	Pass	
5	Microphone	Pass	
6	LINE	Pass	
7	SPDIF OUT	Pass	
8	CDIN	Pass	

OS Windows Vista 64 bit

Driver version : 6.0.1.5473

Item	Description	Result	
1	2 CH	Pass	
2	4 CH	Pass	
3	5.1 CH	Pass	
4	7.1 CH	Pass	
5	Microphone	Pass	
6	LINE	Pass	
7	SPDIF OUT	Pass	
8	CDIN	Pass	

2.5 HDD Test

Test environment:

OS Windows XP professional SP2

HDD MODEL	INTERFACE	capacity	HDD Size Detect	HDD Data Transfer	HDD LED Check
HITACHI HDS728080PLA 380	SATA	82GB	Pass	Pass	Pass
HITACHI HDT722525DLA380		250GB	Pass	Pass	Pass
Seagate ST3160815AS		160GB	Pass	Pass	Pass
Western Digital WD800JD-75MSA3		80 GB	Pass	Pass	Pass
Western Digital WD1600AAJS-22PSA0		160GB	Pass	Pass	Pass
Western Digital WD2500KS-00MJB0		250GB	Pass	Pass	Pass
Western Digital WD3000JS-22PDBO		300GB	Pass	Pass	Pass
Western Digital WD6400H1Q-00	USB	640 GB	Pass	Pass	Pass
Western Digital WD5000H1Q-00		500 GB	Pass	Pass	Pass

2.6 CD-ROM/DVD-ROM Test

Test environment:

OS Windows XP professional SP2

CD-ROM MODEL	INTERFACE	CD-ROM Detect	CD-ROM Data Transfer	PLAY DVD
ASUS DVD DRW-1814BLT	SATA	Pass	Pass	Pass
LG DVD GSA-H62L		Pass	Pass	Pass
LG DVD GGW-H20L		Pass	Pass	Pass
PIONEER DVD DVR-212BK		Pass	Pass	Pass

2.7 USB Test

1. Windows XP SP2

Item	Result	Remark
External USB Keyboard Test	Pass	
External USB Mouse Test	Pass	
Hot plugging test	Pass	
CD ROM	Pass	
USB Mass storage	Pass	

2. Windows Server 2003

Item	Result	Remark
External USB Keyboard Test	Pass	
External USB Mouse Test	Pass	
Hot plugging test	Pass	
CD ROM	Pass	
USB Mass storage	Pass	

3. Windows 2000 SP4

Item	Result	Remark
External USB Keyboard Test	Pass	
External USB Mouse Test	Pass	
Hot plugging test	Pass	
CD ROM	Pass	
USB Mass storage	Pass	

4. Windows Vista 32 bit

Item	Result	Remark
External USB Keyboard Test	Pass	
External USB Mouse Test	Pass	
Hot plugging test	Pass	
CD ROM	Pass	
USB Mass storage	Pass	

5. Windows Vista 64 bit

Item	Result	Remark
External USB Keyboard Test	Pass	
External USB Mouse Test	Pass	
Hot plugging test	Pass	
CD ROM	Pass	
USB Mass storage	Pass	

6. Windows Server 2008

Item	Result	Remark
External USB Keyboard Test	Pass	
External USB Mouse Test	Pass	
Hot plugging test	Pass	
CD ROM	Pass	
USB Mass storage	Pass	

7. Windows 7

Item	Result	Remark
External USB Keyboard Test	Pass	
External USB Mouse Test	Pass	
Hot plugging test	Pass	
CD ROM	Pass	
USB Mass storage	Pass	

2.8 Serial Port Test

1. MS-DOS

Item	Description	Result	Remark
1	RS-232 Mouse Test	Pass	
2	RS-422 & RS-485	Pass	
3	PC Check	Pass	
4	TS	Pass	

2. Windows Server 2003

Item	Description	Result	Remark
1	Device Manager Check	Pass	
2	RS-232 Mouse Test	Pass	
3	b&b com port test	Pass	

3. Windows XP SP2

Item	Description	Result	Remark
1	Device Manager Check	Pass	
2	RS-232 Mouse Test	Pass	
3	b&b com port test	Pass	

4. Windows 2000 SP4

Item	Description	Result	Remark
1	Device Manager Check	Pass	
2	RS-232 Mouse Test	Pass	
3	b&b com port test	Pass	

5. Windows Vista 32 bit

Item	Description	Result	Remark
1	Device Manager Check	Pass	
2	RS-232 Mouse Test	Pass	

6. Windows Vista 64 bit

Item	Description	Result	Remark
1	Device Manager Check	Pass	
2	RS-232 Mouse Test	Pass	

7. Windows Server 2008

Item	Description	Result	Remark
1	Device Manager Check	Pass	
2	RS-232 Mouse Test	Pass	

8. Windows 7

Item	Description	Result	Remark
1	Device Manager Check	Pass	
2	RS-232 Mouse Test	Pass	

2.9 PS2 Keyboard 、 Mouse Test

1. MS-DOS

Item	Description	Result	Remark
1	Keyboard LED Status Test	Pass	
2	Keyboard Typing Test	Pass	
3	Mouse Detect Test	Pass	

2. Windows XP SP2

Item	Description	Result	Remark
1	Device Manager Check	Pass	
2	Keyboard Typing Test	Pass	
3	Mouse Detect Test	Pass	

3. Windows 2000 SP4

Item	Description	Result	Remark
1	Device Manager Check	Pass	
2	Keyboard Typing Test	Pass	
3	Mouse Detect Test	Pass	

4. Windows Server 2003

Item	Description	Result	Remark
1	Device Manager Check	Pass	
2	Keyboard Typing Test	Pass	
3	Mouse Detect Test	Pass	

5. Windows Vista 32 bit

Item	Description	Result	Remark
1	Device Manager Check	Pass	
2	Keyboard Typing Test	Pass	
3	Mouse Detect Test	Pass	

6. Windows Vista 64 bit

Item	Description	Result	Remark
1	Device Manager Check	Pass	
2	Keyboard Typing Test	Pass	
3	Mouse Detect Test	Pass	

7. Windows Server 2008

Item	Description	Result	Remark
1	Device Manager Check	Pass	
2	Keyboard Typing Test	Pass	
3	Mouse Detect Test	Pass	

8. Windows 7

Item	Description	Result	Remark
1	Device Manager Check	Pass	
2	Keyboard Typing Test	Pass	
3	Mouse Detect Test	Pass	

2.10 LAN Test

Data Transfer Test environment:

-CAT 6 UTP 100M

-8 HR. continuous

1. Windows XP SP2

Item	Description	Result	Remark
1	Device Manager Check	Pass	
2	Data Transfer Test	Pass	

2. Windows 2000 SP4

Item	Description	Result	Remark
1	Device Manager Check	Pass	
2	Data Transfer Test	Pass	

3. Windows Server 2003

Item	Description	Result	Remark
1	Device Manager Check	Pass	
2	Data Transfer Test	Pass	

4. Windows Vista 32bit

Item	Description	Result	Remark
1	Device Manager Check	Pass	
2	Data Transfer Test	Pass	

5. Windows Vista 64bit

Item	Description	Result	Remark
1	Device Manager Check	Pass	
2	Data Transfer Test	Pass	

2.11 Power Supply Test

Item	Description	Verification	
		Result	Remark
1	ATX Power	Pass	Seventeam ST-300BLV 300W
2	ATX Power	Pass	Seventeam ST-300WAP 300W
3	ATX Power	Pass	COOLER MASTER RS-390-PMSR-A3 390W
4	ATX Power	Pass	LACONIC ENTERPRISE CO.,LTD 1U150 150W
5	ATX Power	Pass	CWT-300ATX12 300W
6	ATX Power	Pass	CHANNEL WELL TECHNOLOGY CWT-300BDP-F 300W

2.12 Os Install

	Description	Result	Remark
1	Windows 7	Pass	
2	Windows Server 2008	Pass	
3	Windows Vista 64 bit	Pass	
4	Windows Vista 32 bit	Pass	
5	Windows XP SP2	Pass	
6	Windows Server 2003	Pass	
7	Windows 2000 SP4	Pass	
8	Fedora 9 (kernel 2.6.25-14.fc9.i686)	Pass	

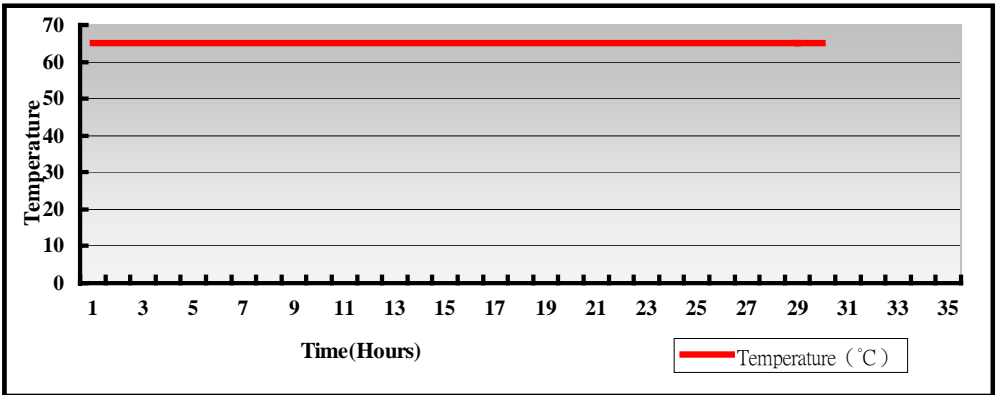
3. Environmental test

3.1 Temperature Test

Hardware Device list:

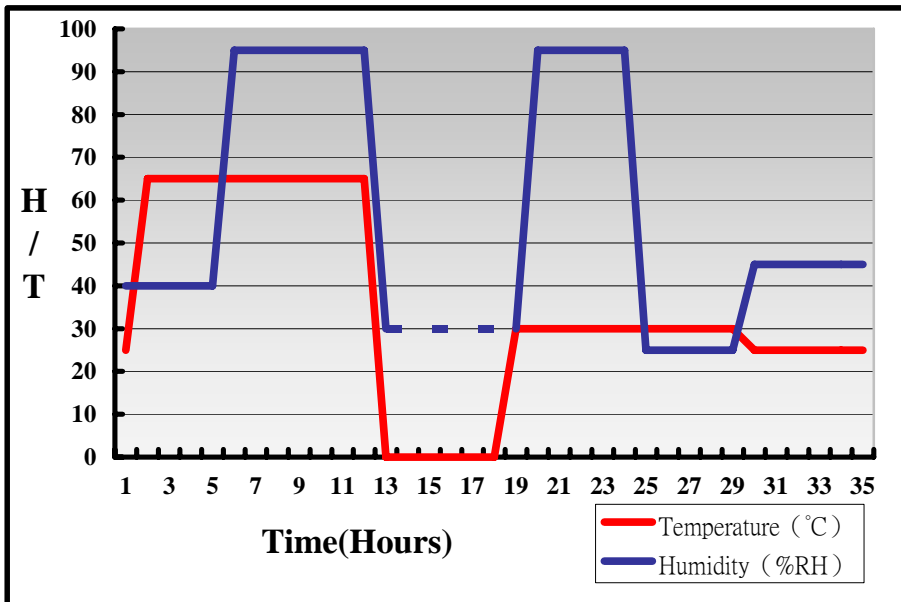
System Board	LV-67B
CPU	Intel(R) Core(TM)2 Duo CPU T7500 2.20GHz
Memory	Transcend DDRIII 1066 (KNB1G0846D) 2GB
HDD	WD1600AAJS-22PSA0 160GB
Operating OS	Windows XP
Test Equipment	THERMOTRON 2800 Programmer/Controller
Test Program	3DMark 2003

Test Result:



Hardware Device list:

System Board	LV-67B
CPU	Intel (R) Core (TM)2 Quad CPU Q9100 2.26GHz
Memory	Kingston DDR3 1066 (K4B2G0846B-HCFB) 4GB*2
Operating OS	Windows XP
Test Equipment	GIANT FORCE (GTH-150-60-CP-AR)
Test Program	3DMark 2003



Definition : When the temperature is 30 degrees below arrive, humidity measurements have not, so by the dashed line express.

Boot Up Test:

Hardware Device list:

System Board	LV-67B
CPU	Intel (R) Core (TM)2 Quad CPU Q9100 2.26GHz
Memory	Kingston DDR3 1066 (K4B2G0846B-HCFB) 4GB*2
HDD	Western Digital WD800JD-75MSA3 80GB

Temperature	Result	Remark
85°C	PASS	50 Times
-40°C	PASS	50 Times

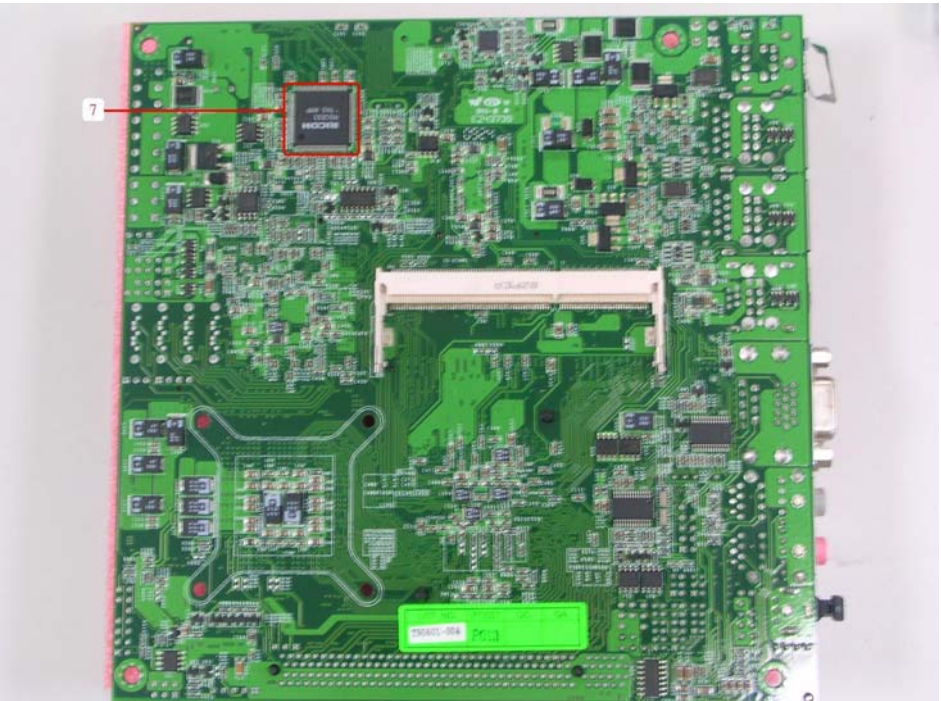
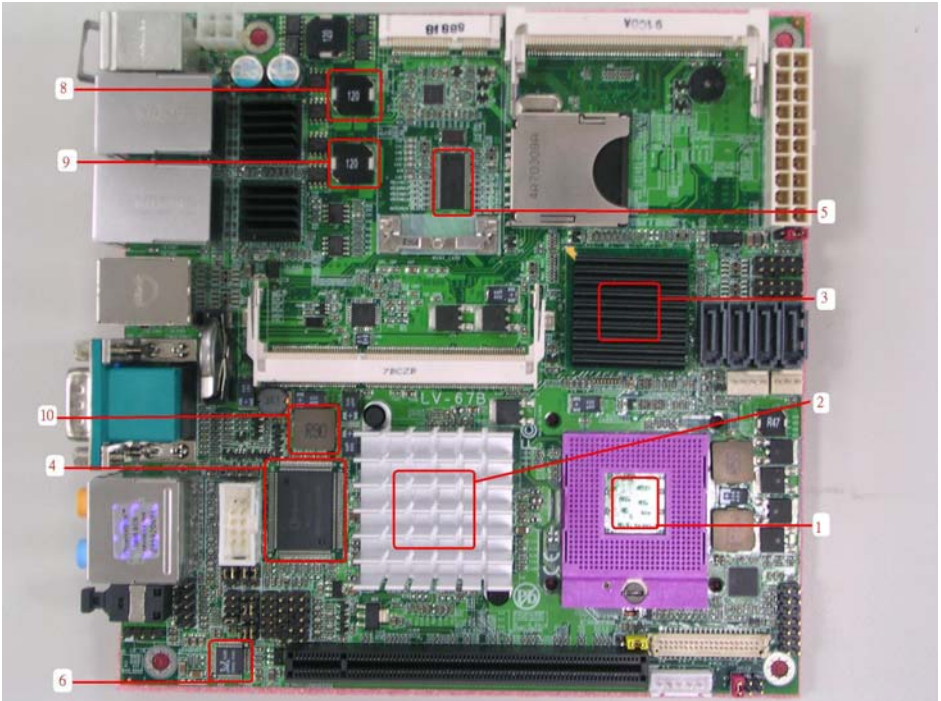
3.2 Thermal measurements at various points on the board

Test Environment :

CPU	Intel(R) Core(TM)2 Duo CPU T8300 2.40GHz
Memory	Transcend DDRIII 1066 (KNB1G0846D) 2GB
HDD	Western Digital WD1600AAJS-22PSA0 160GB
Power	Seventeam ST-300WAP
Operating System	Windows XP SP2
Test Program	3DMARK 2003

Test Result:

Item	Environmental temperature	26°C
1	CPU	49.7°C
2	GM45(Northbridge)	45.6°C
3	ICH9-M (Southbridge)	54.7°C
4	LPCIO(83627DHF)	47.8°C
5	U3(ICS9LP505)	61°C
6	U14(ICHALC888)	56.4°C
7	U16(ICHR5C832)+	46.6°C
8	LC2(LLC12UH)	46.3°C
9	LC3(LLC12UH)	45.8°C
10	LC6(LLC0.9UH)	48.8°C



4. Reliability Test

4.1 Power Consumption Test

1.Test Environment:

Motherboard	LV-67B
CPU	Intel(R) Core(TM)2 Duo CPU T9600 2.80GHz
Memory	Transcend DDRIII 1066 (KNB1G0846D) 2GB
HDD	Western Digital WD2500KS-00MJB0 250GB
Test OS	Windows XP SP2

(A) Power Supply: COOLER MASTER RS-390-PMSR-A3

Voltage	Boot up		3DMARK 2003	
	Current (A)	Power (W)	Current (A)	Power (W)
12V	2.67	32.04	2.6	31.2
5V	3.07	15.35	4	20
3.3V	0.83	4.15	0.68	2.244
5VSB	0.36	1.8	0.019	0.095

(B)DC Power Supply: GWINSTEK SPS-3610

Voltage	Boot up		3DMARK 2003	
	Current (A)	Power (W)	Current (A)	Power (W)
12V	4.11	49.32	4.56	54.72
24V	2.11	50.64	2.32	55.68

1.a.Test Environment:

The same as above but with LCD panel

Display Panel	AUO M170EG01 17" LCD
---------------	----------------------

(A)Power Supply: COOLER MASTER RS-390-PMSR-A3

Voltage	Boot up		3DMARK 2003	
	Current (A)	Power (W)	Current (A)	Power (W)
12V	4.62	55.44	4.36	52.32
5V	4.01	20.05	4.87	24.35
3.3V	0.83	4.15	0.68	2.244
5VSB	0.36	1.8	0.019	0.095

(B)DC Power Supply: GWINSTEK SPS-3610

Voltage	Boot up		3DMARK 2003	
	Current (A)	Power (W)	Current (A)	Power (W)
12V	6.9	82.8	7.4	88.8
24V	3.41	81.84	3.62	86.88

2. Test Environment:

Motherboard	LV-67B
CPU	Intel(R) Core(TM)2 Duo CPU P8400 2.26GHz
Memory	Transcend DDRIII 1066 (KNB1G0846D) 2GB
HDD	Western Digital WD2500KS-00MJB0 250GB
Test OS	Windows XP SP2

(A) Power Supply: COOLER MASTER RS-390-PMSR-A3

Voltage	Boot up		3DMARK 2003	
	Current (A)	Power (W)	Current (A)	Power (W)
12V	2.2	26.4	1.78	21.36
5V	3.03	15.15	3.95	19.75
3.3V	0.8	2.64	0.64	2.112
5VSB	0.18	0.9	0.018	0.09

(B) DC Power Supply: GWINSTEK SPS-3610

Voltage	Boot up		3DMARK 2003	
	Current (A)	Power (W)	Current (A)	Power (W)
12V	3.76	45.12	3.95	47.4
24V	1.89	45.36	1.98	47.52

2.a.Test Environment:

The same as above but with LCD panel

Display Panel	AUO M170EG01 17" LCD
---------------	----------------------

(A)Power Supply: COOLER MASTER RS-390-PMSR-A3

Voltage	Boot up		3DMARK 2003	
	Current (A)	Power (W)	Current (A)	Power (W)
12V	4.13	49.56	3.62	43.44
5V	3.56	17.8	4.61	23.05
3.3V	0.8	2.64	0.68	2.244
5VSB	0.2	1	0.007	0.035

(B)DC Power Supply: GWINSTEK SPS-3610

Voltage	Boot up		3DMARK 2003	
	Current (A)	Power (W)	Current (A)	Power (W)
12V	6.09	73.08	6.36	76.32
24V	3.04	72.96	3.13	75.12

3. Test Environment:

Motherboard	LV-67B
CPU	Intel(R) Core(TM)2 Duo CPU T7700 2.40GHz
Memory	Transcend DDRIII 1066 (KNB1G0846D) 2GB
HDD	Western Digital WD2500KS-00MJB0 250GB
Test OS	Windows XP SP2

(A) Power Supply: COOLER MASTER RS-390-PMSR-A3

Voltage	Boot up		3DMARK 2003	
	Current (A)	Power (W)	Current (A)	Power (W)
12V	2.95	35.4	2.85	34.2
5V	2.59	12.95	3.78	18.9
3.3V	0.83	2.739	0.66	2.178
5VSB	0.21	1.05	0.015	0.075

(B) DC Power Supply: GWINSTEK SPS-3610

Voltage	Boot up		3DMARK 2003	
	Current (A)	Power (W)	Current (A)	Power (W)
12V	4.19	50.28	4.86	58.32
24V	2.25	54	2.39	57.36

3.a.Test Environment:

The same as above but with LCD panel

Display Panel	AUO M170EG01 17" LCD
---------------	----------------------

(A)Power Supply: COOLER MASTER RS-390-PMSR-A3

Voltage	Boot up		3DMARK 2003	
	Current (A)	Power (W)	Current (A)	Power (W)
12V	4.26	51.12	4.67	56.04
5V	3.49	17.45	4.73	23.65
3.3V	0.83	2.739	0.7	2.31
5VSB	0.21	1.05	0.017	0.085

(B)DC Power Supply: GWINSTEK SPS-3610

Voltage	Boot up		3DMARK 2003	
	Current (A)	Power (W)	Current (A)	Power (W)
12V	6.6	79.2	7.57	90.84
24V	3.19	76.56	3.6	86.4

4. Test Environment:

Motherboard	LV-67B
CPU	Intel(R) Core(TM)2 Duo CPU T8300 2.40GHz
Memory	Transcend DDRIII 1066 (KNB1G0846D) 2GB
HDD	Western Digital WD2500KS-00MJB0 250GB
Test OS	Windows XP SP2

(A) Power Supply: COOLER MASTER RS-390-PMSR-A3

Voltage	Boot up		3DMARK 2003	
	Current (A)	Power (W)	Current (A)	Power (W)
12V	2.69	32.28	2.42	29.04
5V	2.81	14.05	3.78	18.9
3.3V	0.8	2.64	0.66	2.178
5VSB	0.21	1.05	0.016	0.08

(B)DC Power Supply: GWINSTEK SPS-3610

Voltage	Boot up		3DMARK 2003	
	Current (A)	Power (W)	Current (A)	Power (W)
12V	3.75	45	4.58	54.96
24V	2.15	51.6	2.3	55.2

4.a.Test Environment:

The same as above but with LCD panel

Display Panel	AUO M170EG01 17" LCD
----------------------	----------------------

(A)Power Supply: COOLER MASTER RS-390-PMSR-A3

Voltage	Boot up		3DMARK 2003	
	Current (A)	Power (W)	Current (A)	Power (W)
12V	3.98	47.76	4.33	51.96
5V	3.19	15.95	4.75	23.75
3.3V	0.82	2.706	0.69	2.277
5VSB	0.27	1.35	0.017	0.085

(B)DC Power Supply: GWINSTEK SPS-3610

Voltage	Boot up		3DMARK 2003	
	Current (A)	Power (W)	Current (A)	Power (W)
12V	6.58	78.96	7.32	87.84
24V	3.43	82.32	3.56	85.44

5. Test Environment:

Motherboard	LV-67B
CPU	Intel (R) Core (TM)2 Quad CPU Q9100 2.26GHz
Memory	Kingston DDR3 1066 (K4B2G0846B-HCFB) 4GB*2
HDD	Western Digital WD800JD-75MSA3 80GB
Test OS	Windows XP SP2

(A) Power Supply: COOLER MASTER RS-390-PMSR-A3

Voltage	Boot up		3DMARK 2003	
	Current (A)	Power (W)	Current (A)	Power (W)
12V	2.05	24.6	2.1	25.2
5V	3.21	16.05	4.46	22.3
3.3V	0.77	2.541	0.66	2.178
5VSB	0.301	1.505	0.012	0.06

(B)DC Power Supply: GWINSTEK SPS-3610

Voltage	Boot up		3DMARK 2003	
	Current (A)	Power (W)	Current (A)	Power (W)
12V	4.49	53.88	4.86	58.32
24V	2.21	53.04	2.36	56.64

5.a.Test Environment:

The same as above but with LCD panel

Display Panel	AUO M170EG01 17" LCD
---------------	----------------------

(A)Power Supply: COOLER MASTER RS-390-PMSR-A3

Voltage	Boot up		3DMARK 2003	
	Current (A)	Power (W)	Current (A)	Power (W)
12V	4.09	49.08	4	48
5V	4.03	20.15	5.2	26
3.3V	0.79	2.607	0.67	2.211
5VSB	0.287	1.435	0.015	0.075

(B)DC Power Supply: GWINSTEK SPS-3610

Voltage	Boot up		3DMARK 2003	
	Current (A)	Power (W)	Current (A)	Power (W)
12V	7.17	86.04	7.55	90.6
24V	3.48	83.52	3.63	87.12

6. Test Environment:

Motherboard	LV-67B
CPU	Intel(R) Core(TM)2 Duo CPU T7500 2.20GHz
Memory	Kingston DDR3 1066 (K4B2G0846B-HCFB) 4GB*2
HDD	Western Digital WD800JD-75MSA3 80GB
Test OS	Windows XP SP2

(A) Power Supply: COOLER MASTER RS-390-PMSR-A3

Voltage	Boot up		3DMARK 2003	
	Current (A)	Power (W)	Current (A)	Power (W)
12V	1.8	21.6	1.97	23.64
5V	2.73	13.65	4.09	20.45
3.3V	1.12	3.696	0.94	3.102
5VSB	0.325	1.625	0.016	0.08

(B) DC Power Supply: GWINSTEK SPS-3610

Voltage	Boot up		3DMARK 2003	
	Current (A)	Power (W)	Current (A)	Power (W)
12V	4.05	48.6	4.58	54.96
24V	1.96	47.04	2.24	53.76

6.a.Test Environment:

The same as above but with LCD panel

Display Panel	AUO M170EG01 17" LCD
---------------	----------------------

(A)Power Supply: COOLER MASTER RS-390-PMSR-A3

Voltage	Boot up		3DMARK 2003	
	Current (A)	Power (W)	Current (A)	Power (W)
12V	3.74	44.88	3.94	47.28
5V	3.59	17.95	4.97	24.85
3.3V	1.15	3.795	0.95	3.135
5VSB	0.334	1.67	0.009	0.045

(B)DC Power Supply: GWINSTEK SPS-3610

Voltage	Boot up		3DMARK 2003	
	Current (A)	Power (W)	Current (A)	Power (W)
12V	6.57	78.84	7.14	85.68
24V	3.31	79.44	3.51	84.24

7. Test Environment:

Motherboard	LV-67B
CPU	Intel Celeron Processor 575 2GHz
Memory	Kingston DDR3 1066 (K4B2G0846B-HCFB) 4GB*2
HDD	Western Digital WD800JD-75MSA3 80GB
Test OS	Windows XP SP2

(A) Power Supply: COOLER MASTER RS-390-PMSR-A3

Voltage	Boot up		3DMARK 2003	
	Current (A)	Power (W)	Current (A)	Power (W)
12V	0.94	11.28	1.16	13.92
5V	2.43	12.15	4	20
3.3V	0.76	2.508	0.68	2.244
5VSB	0.27	1.35	0.024	0.12

(B) DC Power Supply: GWINSTEK SPS-3610

Voltage	Boot up		3DMARK 2003	
	Current (A)	Power (W)	Current (A)	Power (W)
12V	3.14	37.68	3.74	44.88
24V	1.6	38.4	1.85	44.4

7.a.Test Environment:

The same as above but with LCD panel

Display Panel	AUO M170EG01 17" LCD
----------------------	----------------------

(A)Power Supply: COOLER MASTER RS-390-PMSR-A3

Voltage	Boot up		3DMARK 2003	
	Current (A)	Power (W)	Current (A)	Power (W)
12V	2.95	35.4	3.11	37.32
5V	3.31	16.55	4.86	24.3
3.3V	0.8	2.64	0.7	2.31
5VSB	0.27	1.35	0.02	0.1

(B)DC Power Supply: GWINSTEK SPS-3610

Voltage	Boot up		3DMARK 2003	
	Current (A)	Power (W)	Current (A)	Power (W)
12V	5.66	67.92	6.41	76.92
24V	2.76	66.24	3.07	73.68

5. Performance Test

5.1 Business Win Stone 2001

Windows XP SP2

WEIGHTED SUITE	Test Environment	Result	Remark
Business Win stone2001	Intel(R) Core(TM)2 Duo CPU T7700 2.40GHz Transcend DDRIII 1066 1GB (KNB1G0846D) Western Digital WD1600AAJS-22PSA0 160GB	Pass	58.2 62.3 61.5 52

5.2 Business Win Stone 2002

Windows XP SP2

WEIGHTED SUITE	Test Environment	Result	Remark
Business Win stone2002	Intel(R) Core(TM)2 Duo CPU T9600 2.80GHz Transcend DDRIII 1066 2GB (KNB1G0846D) Western Digital WD1600AAJS-22PSA0 160GB	Pass	30.9 29.7 30.1 30.7
Business Win stone2002	Intel(R) Core(TM)2 Duo CPU T7700 2.40GHz Transcend DDRIII 1066 1GB (KNB1G0846D) Western Digital WD1600AAJS-22PSA0 160GB	Pass	28.6 30.5 29.6 30.1
Business Win stone2002	Intel (R) Core (TM)2 Quad CPU Q9100 2.26GHz Kingston DDR3 1066 4GB*2 (K4B2G0846B-HCFB) Western Digital WD800JD-75MSA3 80GB	Pass	45.5 44.9 44.5 44.1

5.3 Business Win Stone 2004

Windows XP SP2

WEIGHTED SUITE	Test Environment	Result	Remark
Business Win stone2004	Intel(R) Core(TM)2 Duo CPU T9600 2.80GHz Transcend DDRIII 1066 2GB (K9N8046D) Western Digital WD1600AAJS-22PSA0 160GB	Pass	15.2 9.7 15.5 17.4
Business Win stone2004	Intel(R) Core(TM)2 Duo CPU T7700 2.40GHz Transcend DDRIII 1066 1GB (K9N8046D) Western Digital WD1600AAJS-22PSA0 160GB	Pass	17.6 17.8 18.8 14.8
Business Win stone2004	Intel (R) Core (TM)2 Quad CPU Q9100 2.26GHz Kingston DDR3 1066 4GB*2 (K4B2G0846B-HCFB) Western Digital WD800JD-75MSA3 80GB	Pass	23.7 23.6 24.1 24.6

5.4 Content Creation Winstone 2001 (version 1.0)

Windows XP SP2

WEIGHTED SUITE	Test Environment	Result	Remark
Content Creation Winstone 2001	Intel(R) Core(TM)2 Duo CPU T9600 2.80GHz Transcend DDRIII 1066 2GB (KNB1G0846D) Western Digital WD1600AAJS-22PSA0 160GB	Pass	99.1 99 98.1 99.2
Content Creation Winstone 2001	Intel(R) Core(TM)2 Duo CPU T7700 2.40GHz Transcend DDRIII 1066 1GB (KNB1G0846D) Western Digital WD1600AAJS-22PSA0 160GB	Pass	106.7 107.4 106.8 103.5

5.5 Content Creation Winstone 2001 (version 1.0.1)

Windows XP SP2

WEIGHTED SUITE	Test Environment	Result	Remark
Content Creation Winstone 2001	Intel(R) Core(TM)2 Duo CPU T9600 2.80GHz A-DATA DDRIII 1066 2GB (KNB1G0846D) Western Digital WD1600AAJS-22PSA0 160GB	Pass	100.5 99.7 98.3 98.4
Content Creation Winstone 2001	Intel(R) Core(TM)2 Duo CPU T7500 2.20GHz Transcend DDRIII 1066 2GB (KNB1G0846D) Western Digital WD1600AAJS-22PSA0 160GB	Pass	98.5 100.2 100.4 99

5.6 Content Creation Winstone 2004

Windows XP SP2

WEIGHTED SUITE	Test Environment	Result	Remark
Multimedia Content Creation Winstone 2004	Intel(R) Core(TM)2 Duo CPU T9600 2.80GHz Transcend DDRIII 1066 2GB (KNB1G0846D) Western Digital WD1600AAJS-22PSA0 160GB	Pass	29 32.7 34.1 33.2
Multimedia Content Creation Winstone 2004	Intel(R) Core(TM)2 Duo CPU T7500 2.20GHz Transcend DDRIII 1066 2GB (KNB1G0846D) Western Digital WD1600AAJS-22PSA0 160GB	Pass	30.6 30.7 30.6 30.4
Multimedia Content Creation Winstone 2004	ntel (R) Core (TM)2 Quad CPU Q9100 2.26GHz Kingston DDR3 1066 4GB *2(K4B2G0846B-HCFB) Western Digital WD800JD-75MSA3 80GB	Pass	40.8 40.6 40.9 41

5.7 3D MARK(2001、2003、2005)

Windows XP SP2

WEIGHTED SUITE	Test Environment	Result	Remark
3DMARK2001 Scores	Intel(R) Core(TM)2 Duo CPU T9600 2.80GHz Transcend DDRIII 1066 2GB (KNB1G0846D) HITACHI HDT722525DLA380 250GB	Pass	6821
3DMARK2003 Scores		Pass	2737
3DMARK2005 Scores		Pass	1277

Windows XP SP2

WEIGHTED SUITE	Test Environment	Result	Remark
3DMARK2001 Scores	Intel(R) Core(TM)2 Duo CPU T7700 2.40GHz Transcend DDRIII 1066 2GB (KNB1G0846D) Western Digital WD1600AAJS-22PSA0 160GB	Pass	5550
3DMARK2003 Scores		Pass	1899
3DMARK2005 Scores		Pass	1074

Windows XP SP2

WEIGHTED SUITE	Test Environment	Result	Remark
3DMARK2001 Scores	Intel(R) Core(TM)2 Duo CPU T8300 2.40GHz Transcend DDRIII 1066 (KNB1G0846D) 2GB Western Digital WD1600AAJS-22PSA0 160GB	Pass	5575
3DMARK2003 Scores		Pass	1865
3DMARK2005 Scores		Pass	1108

Windows XP SP2

WEIGHTED SUITE	Test Environment	Result	Remark
3DMARK2001 Scores	Intel(R) Core(TM)2 Duo CPU P8400 2.26GHz Transcend DDRIII 1066 (KNB1G0846D) 2GB Western Digital WD1600AAJS-22PSA0 160GB	Pass	6556
3DMARK2003 Scores		Pass	2152
3DMARK2005 Scores		Pass	1197

Windows XP SP2

WEIGHTED SUITE	Test Environment	Result	Remark
3DMARK2001 Scores	Intel(R) Core(TM)2 Duo CPU T7500 2.20GHz Transcend DDRIII 1066 (KNB1G0846D) 2GB Western Digital WD1600AAJS-22PSA0 160GB	Pass	5650
3DMARK2003 Scores		Pass	1903
3DMARK2005 Scores		Pass	1092

Windows XP SP2

WEIGHTED SUITE	Test Environment	Result	Remark
3DMARK2001 Scores	Intel (R) Core (TM)2 Quad CPU Q9100 2.26GHz Kingston DDR3 1066 4GB*2 (K4B2G0846B-HCFB) Western Digital WD800JD-75MSA3 80GB	Pass	8093
3DMARK2003 Scores		Pass	2478
3DMARK2005 Scores		Pass	1363

Windows XP SP2

WEIGHTED SUITE	Test Environment	Result	Remark
3DMARK2001 Scores	Intel Celeron Processor 575 2GHz Kingston DDR3 1066 4GB*2 (K4B2G0846B-HCFB) Western Digital WD800JD-75MSA3 80GB	Pass	6161
3DMARK2003 Scores		Pass	2123
3DMARK2005 Scores		Pass	1155

5.8 3D MARK2006

Windows XP SP2

Item	WEIGHTED SUITE	Test Environment	Result	Remark
1	3DMARK Score	Intel(R) Core(TM)2 Duo CPU T9600 2.80GHz Transcend DDRIII 1066 (KNB1G0846D) 2GB Western Digital WD1600AAJS-22PSA0 160GB	Pass	313
2	SM2.0 Score		Pass	101
3	HDR/SM3.0 Score		Pass	113
4	CPU Score		Pass	2509

Windows XP SP2

Item	WEIGHTED SUITE	Test Environment	Result	Remark
1	3DMARK Score	Intel(R) Core(TM)2 Duo CPU T9600 2.80GHz A-DATA DDRIII 1066 (KNB1G0846D) 2GB HITACHI HDT722525DLA380 250GB	Pass	313
2	SM2.0 Score		Pass	100
3	HDR/SM3.0 Score		Pass	115
4	CPU Score		Pass	2485

Windows XP SP2

Item	WEIGHTED SUITE	Test Environment	Result	Remark
1	3DMARK Score	Intel(R) Core(TM)2 Duo CPU T8300 2.40GHz Transcend DDRIII 1066 (KNB1G0846D) 2GB Western Digital WD1600AAJS-22PSA0 160GB	Pass	230
2	SM2.0 Score		Pass	69
3	HDR/SM3.0 Score		Pass	69
4	CPU Score		Pass	2117

Windows XP SP2

Item	WEIGHTED SUITE	Test Environment	Result	Remark
1	3DMARK Score	Intel(R) Core(TM)2 Duo CPU P8400 2.26GHz Transcend DDRIII 1066 (KNB1G0846D) 2GB Western Digital WD1600AAJS-22PSA0 160GB	Pass	254
2	SM2.0 Score		Pass	74
3	HDR/SM3.0 Score		Pass	100
4	CPU Score		Pass	2020

Windows XP SP2

Item	WEIGHTED SUITE	Test Environment	Result	Remark
1	3DMARK Score	Intel(R) Core(TM)2 Duo CPU T7500 2.20GHz Transcend DDRIII 1066 (KNB1G0846D) 2GB Western Digital WD1600AAJS-22PSA0 160GB	Pass	226
2	SM2.0 Score		Pass	67
3	HDR/SM3.0 Score		Pass	88
4	CPU Score		Pass	1902

Windows XP SP2

Item	WEIGHTED SUITE	Test Environment	Result	Remark
1	3DMARK Score	Intel (R) Core (TM)2 Quad CPU Q9100 2.26GHz Kingston DDR3 1066 4GB*2 (K4B2G0846B-HCFB) Western Digital WD800JD-75MSA3 80GB	Pass	812
2	SM2.0 Score		Pass	237
3	HDR/SM3.0 Score		Pass	324
4	CPU Score		Pass	3162

Windows XP SP2

Item	WEIGHTED SUITE	Test Environment	Result	Remark
1	3DMARK Score	Intel Celeron Processor 575 2GHz Kingston DDR3 1066 4GB*2 (K4B2G0846B-HCFB) Western Digital WD800JD-75MSA3 80GB	Pass	847
2	SM2.0 Score		Pass	248
3	HDR/SM3.0 Score		Pass	363
4	CPU Score		Pass	874

5.9 PC MARK2002

Test Environment
Intel(R) Core(TM)2 Duo CPU T9600 2.80GHz Transcend DDRIII 1066 (KNB1G0846D) 2GB HITACHI HDT722525DLA380 250GB

Windows XP SP2

Item	WEIGHTED SUITE	Result	Remark
1	CPU test Score	Pass	11001
2	Memory test Score	Pass	34049
3	HDD test Score	Pass	1440

Test Environment
Intel(R) Core(TM)2 Duo CPU T9600 2.80GHz Transcend DDRIII 1066 (KNB1G0846D) 2GB Western Digital WD1600AAJS-22PSA0 160GB

Windows XP SP2

Item	WEIGHTED SUITE	Result	Remark
1	CPU test Score	Pass	11005
2	Memory test Score	Pass	N/A
3	HDD test Score	Pass	N/A

Test Environment
Intel(R) Core(TM)2 Duo CPU T7700 2.40GHz Transcend DDRIII 1066 (KNB1G0846D) 1GB Western Digital WD1600AAJS-22PSA0 160GB

Windows XP SP2

Item	WEIGHTED SUITE	Result	Remark
1	CPU test Score	Pass	9452
2	Memory test Score	Pass	30082
3	HDD test Score	Pass	583

Test Environment
Intel(R) Core(TM)2 Duo CPU P8400 2.40GHz Transcend DDRIII 1066 (KNB1G0846D) 2GB Western Digital WD1600AAJS-22PSA0 160GB

Windows XP SP2

Item	WEIGHTED SUITE	Result	Remark
1	CPU test Score	Pass	8889
2	Memory test Score	Pass	26849
3	HDD test Score	Pass	605

Test Environment
Intel(R) Core(TM)2 Duo CPU T7500 2.20GHz Transcend DDRIII 1066 (KNB1G0846D) 2GB Western Digital WD1600AAJS-22PSA0 160GB

Windows XP SP2

Item	WEIGHTED SUITE	Result	Remark
1	CPU test Score	Pass	8679
2	Memory test Score	Pass	27471
3	HDD test Score	Pass	604

Test Environment
Intel (R) Core (TM)2 Quad CPU Q9100 2.26GHz Kingston DDR3 1066 4GB*2 (K4B2G0846B-HCFB) Western Digital WD800JD-75MSA3 80GB

Windows XP SP2

Item	WEIGHTED SUITE	Result	Remark
1	CPU test Score	Pass	8907
2	Memory test Score	Pass	27651
3	HDD test Score	Pass	1306

Test Environment
Intel Celeron Processor 575 2GHz Kingston DDR3 1066 4GB*2 (K4B2G0846B-HCFB) Western Digital WD800JD-75MSA3 80GB

Windows XP SP2

Item	WEIGHTED SUITE	Result	Remark
1	CPU test Score	Pass	7851
2	Memory test Score	Pass	10080
3	HDD test Score	Pass	1343

5.10 PC MARK2004

Test Environment
Intel(R) Core(TM)2 Duo CPU T9600 2.80GHz Transcend DDRIII 1066 (KNB1G0846D) 2GB HITACHI HDT722525DLA380 250GB

Windows XP PS2

Item	WEIGHTED SUITE	Result	Remark
1	PC Mark Score	Pass	N/A
2	CPU Score	Pass	N/A
3	Memory Score	Pass	10239
4	Graphic Score	Pass	1515
5	HDD Score	Pass	5214

Test Environment
Intel(R) Core(TM)2 Duo CPU T7700 2.40GHz Transcend DDRIII 1066 (KNB1G0846D) 1GB Western Digital WD1600AAJS-22PSA0 160GB

Windows XP PS2

Item	WEIGHTED SUITE	Result	Remark
1	PC Mark Score	Pass	N/A
2	CPU Score	Pass	N/A
3	Memory Score	Pass	7629
4	Graphic Score	Pass	1422
5	HDD Score	Pass	2071

Test Environment
Intel(R) Core(TM)2 Duo CPU T8300 2.40GHz Transcend DDRIII 1066 (KNB1G0846D) 2GB Western Digital WD1600AAJS-22PSA0 160GB

Windows XP PS2

Item	WEIGHTED SUITE	Result	Remark
1	PC Mark Score	Pass	N/A
2	CPU Score	Pass	N/A
3	Memory Score	Pass	6356
4	Graphic Score	Pass	1418
5	HDD Score	Pass	2085

Test Environment
Intel(R) Core(TM)2 Duo CPU P8400 2.40GHz Transcend DDRIII 1066 (KNB1G0846D) 2GB Western Digital WD1600AAJS-22PSA0 160GB

Windows XP PS2

Item	WEIGHTED SUITE	Result	Remark
1	PC Mark Score	Pass	N/A
2	CPU Score	Pass	N/A
3	Memory Score	Pass	7029
4	Graphic Score	Pass	1502
5	HDD Score	Pass	2105

Test Environment
Intel(R) Core(TM)2 Duo CPU T7500 2.20GHz Transcend DDRIII 1066 (KNB1G0846D) 2GB Western Digital WD1600AAJS-22PSA0 160GB

Windows XP PS2

Item	WEIGHTED SUITE	Result	Remark
1	PC Mark Score	Pass	6479
2	CPU Score	Pass	N/A
3	Memory Score	Pass	7391
4	Graphic Score	Pass	1419
5	HDD Score	Pass	2127

Test Environment
Intel (R) Core (TM)2 Quad CPU Q9100 2.26GHz Kingston DDR3 1066 4GB*2 (K4B2G0846B-HCFB) Western Digital WD800JD-75MSA3 80GB

Windows XP PS2

Item	WEIGHTED SUITE	Result	Remark
1	PC Mark Score	Pass	N/A
2	CPU Score	Pass	N/A
3	Memory Score	Pass	8998
4	Graphic Score	Pass	1622
5	HDD Score	Pass	4653

Test Environment
Intel Celeron Processor 575 2GHz Kingston DDR3 1066 4GB*2 (K4B2G0846B-HCFB) Western Digital WD800JD-75MSA3 80GB

Windows XP PS2

Item	WEIGHTED SUITE	Result	Remark
1	PC Mark Score	Pass	N/A
2	CPU Score	Pass	4511
3	Memory Score	Pass	4719
4	Graphic Score	Pass	1395
5	HDD Score	Pass	N/A

5.11 PC MARK2005

Test Environment
Intel(R) Core(TM)2 Duo CPU T7700 2.40GHz Transcend DDRIII 1066 1GB (KN81G0846D) HITACHI HDT722525DLA380 250GB

Windows XP SP2

Item	WEIGHTED SUITE	Result	Remark
1	PCMARK Score	Pass	N/A
2	CPU Score	Pass	6113
3	Memory Score	Pass	4813
4	Graphic Score	Pass	N/A
5	HDD Score	Pass	5617

Test Environment
Intel(R) Core(TM)2 Duo CPU T9600 2.80GHz A-DATA DDRIII 1066 (K4B1G0846D) 2GB Western Digital WD1600AAJS-22PSA0 160GB

Windows XP SP2

Item	WEIGHTED SUITE	Result	Remark
1	PCMARK Score	Pass	N/A
2	CPU Score	Pass	7147
3	Memory Score	Pass	5842
4	Graphic Score	Pass	N/A
5	HDD Score	Pass	2573

Test Environment
Intel(R) Core(TM)2 Duo CPU T9600 2.80GHz Transcend DDRIII 1066 (KNB1G0846D) 2GB HITACHI HDT722525DLA380 250GB

Windows XP SP2

Item	WEIGHTED SUITE	Result	Remark
1	PCMARK Score	Pass	5092
2	CPU Score	Pass	7147
3	Memory Score	Pass	5812
4	Graphic Score	Pass	1705
5	HDD Score	Pass	5584

Test Environment
Intel(R) Core(TM)2 Duo CPU T7500 2.20GHz Transcend DDRIII 1066 (KNB1G0846D) 2GB Western Digital WD1600AAJS-22PSA0 160GB

Windows XP SP2

Item	WEIGHTED SUITE	Result	Remark
1	PCMARK Score	Pass	3904
2	CPU Score	Pass	5631
3	Memory Score	Pass	4559
4	Graphic Score	Pass	1526
5	HDD Score	Pass	2579

Test Environment
Intel(R) Core(TM)2 Duo CPU T8300 2.40GHz Transcend DDRIII 1066 (KNB1G0846D) 2GB Western Digital WD1600AAJS-22PSA0 160GB

Windows XP SP2

Item	WEIGHTED SUITE	Result	Remark
1	PCMARK Score	Pass	4263
2	CPU Score	Pass	6123
3	Memory Score	Pass	4737
4	Graphic Score	Pass	1655
5	HDD Score	Pass	2587

Test Environment
Intel(R) Core(TM)2 Duo CPU P8400 2.26GHz Transcend DDRIII 1066 (KNB1G0846D) 2GB Western Digital WD1600AAJS-22PSA0 160GB

Windows XP SP2

Item	WEIGHTED SUITE	Result	Remark
1	PCMARK Score	Pass	4077
2	CPU Score	Pass	5808
3	Memory Score	Pass	5208
4	Graphic Score	Pass	1656
5	HDD Score	Pass	2599

Test Environment
Intel (R) Core (TM)2 Quad CPU Q9100 2.26GHz Kingston DDR3 1066 4GB*2 (K4B2G0846B-HCFB) Western Digital WD800JD-75MSA3 80GB

Windows XP SP2

Item	WEIGHTED SUITE	Result	Remark
1	PCMARK Score	Pass	4745
2	CPU Score	Pass	7286
3	Memory Score	Pass	5152
4	Graphic Score	Pass	1803
5	HDD Score	Pass	4959

Test Environment
Intel Celeron Processor 575 2GHz Kingston DDR3 1066 4GB*2 (K4B2G0846B-HCFB) Western Digital WD800JD-75MSA3 80GB

Windows XP SP2

Item	WEIGHTED SUITE	Result	Remark
1	PCMARK Score	Pass	N/A
2	CPU Score	Pass	3641
3	Memory Score	Pass	3888
4	Graphic Score	Pass	1672
5	HDD Score	Pass	4984

5.12 SATA Performance

5.12.1 SATA HDD

Test environment:

OS Windows XP professional SP2

Program (HD Tune)

HDD MODEL	INTERFACE	capacity	Average	Burst Rate	Access time
Western Digital WD800JD-75MSA3	SATA	80GB	47.4 MB/sec	136.5 MB/sec	13.7 ms
Western Digital WD1600AAJS-22PSA0		160GB	58.9 MB/sec	121.7 MB/sec	13.1 ms
Western Digital WD2500KS-00MJB0		250GB	53.1 MB/sec	134.9 MS/sec	13.3 ms
Western Digital WD3000JS-22PDBO		300GB	53.5 MB/sec	135 MS/sec	13.9 ms
Seagate ST3160815AS		160GB	60.5 MB/sec	149.9 MB/sec	15.5 ms
HITACHI HDT722525DLA 380		250GB	52.8 MB/sec	111.2 MB/sec	13 ms
HITACHI HDS728080PLA 380		82GB	48.0 MB/sec	111.5 MS/sec	13.1 ms

5.12.2 SATA CD-ROM/DVD-ROM

Test environment:

OS Windows XP professional SP2

Program (NERO)

CD-ROM MODEL	INTERFACE	Average speed	Full READ	Burst Rate	CD
ASUS DVD DRW-1814BLT	SATA	26.51 x	140 ms	44 MB/s	52X CD-R
LG DVD GSA-H62L		25.74 x	182 ms	41 MB/s	
LG DVD GGW-H20L		29.72 x	210 ms	40 MB/s	
PIONEER DVD DVR-212BK		29.79 x	191 ms	45 MB/s	

5.13 USB Performance

5.13.1 USB HDD

Test environment:

OS Windows XP professional SP2

Program (HD Tune)

HDD MODEL	INTERFACE	capacity	Average	Burst Rate	Access time
Western Digital WD6400H1Q-00	SATA	640 GB	27.5 MB/sec	27.8 MB/sec	14.6 ms
Western Digital WD5000H1Q-00		500 GB	27.3 MB/sec	27.8 MB/sec	15.3 ms
JetFlash Transcend		8 GB	26 MB/sec	25 MB/sec	0.6 ms
TDK LoR Trans-IT Drive		4 GB	16.1 MB/sec	13.9 MB/sec	1.8 ms
SD/MMC Reader		2GB	14.7 MB/sec	11.4 MB/sec	1.1 ms
Apacer USB FLASH DRIVE		515 MB	9.1 MB/sec	9.3 MB/sec	1.8 ms
ACTIONS USB DEVICE		261 MB	0.5 MB/sec	0.5 MB/sec	6 ms

5.13.2 USB CD-ROM/DVD-ROM

Test environment:

OS Windows XP professional SP2

Program (NERO)

CD-ROM MODEL	INTERFACE	Average speed	Fill READ	Burst Rate	CD
LITEON DVD SOSC-2485KX	USB	13.06 x	140ms	22MB/s	52X CD/ DVD-R
LITEON DVD SOSW-833SX		12.85x	227ms	21MB/s	

5.14 Vibration Test

Motherboard	LV-67B		
Amplitude	Frequency	Time (1min/1Time)	Result
0.75mm	5 → 55 → 5 Hz	10	Pass
1.00mm	5 → 55 → 5 Hz	10	Pass
1.25mm	5 → 55 → 5 Hz	10	Pass
1.5mm	5 → 55 → 5 Hz	10	Pass
1.5mm	5 → 55 → 5 Hz	120	Pass