

LV-674

Test Report

Edition 1.01

2006/3/13



Test Engineer : Zhying

Identify: Ken

Index

Index	2
1. Function test	4
1.1 Hardware function	4
1.2 BIOS function	6
1.3 Driver	8
2. Compatibility test	9
2.1 CPU Test	9
2.2 Memory Test	11
2.3 VGA Graphic Test	14
2.4 Audio Test	15
2.5 HDD Test	17
2.6 USB Test	25
2.7 Serial Port Test	27
2.8 IrDA Test	28
2.9 Keyboard Test	29
2.10 Mouse Test	30
2.11 LAN Module Test	31
2.12 Power Supply Test	32
2.13 CD-ROM Test	33
2.14 Floppy Drive Test	37
2.15 Boot Up Test	39
2.16 Os Install	39
2.17 Mini-PCI Card	39
3. Environmental test	40
3.1 Temperature Test	40
4. Reliability Test	41
4.1 Power Consumption Test	41
4.2 Thermal measurements at various points on the board	45
5. Performance Test	47

5.1 Business Win Stone 2001	47
5.2 Business Win Stone 2002	48
5.3 Business Win Stone 2004	49
5.4 Multimedia Content Creation Winstone 2004	50
5.5 3D MARK	51
5.6 PCMARK 2002	52
5.7 PCMARK 2004	53
5.8 PCMARK 2005	54

1. Function test

1.1 Hardware function

Base Function Test

1	Power Button	Pass
2	Reset	Pass
3	Power LED	Pass
4	HDD LED	Pass
5	IDE Primary Master	Pass
6	IDE Primary Slave	Pass
7	IDE Secondary Master	Pass
8	IDE Secondary Slave	Pass
9	Floppy	Pass
10	LAN Port	Pass
11	DIMM	Pass
12	VGA Port	Pass
13	Keyboard	Pass
14	Mouse	Pass
15	AUDIO Port	Pass
16	CDIN	Pass
17	COM 1	Pass
18	COM 2	Pass
19	IEEE 1394 Port	Pass
20	SPDIF	Pass
21	IRDA	Pass
22	NBFAN	Pass
23	SYSFAN	Pass
24	CPUFAN	Pass
25	MINI PCI	Pass

26	USB Port	Pass
27	PCI Express	Pass

2.0 PITCH (DIP)

1	JRTC	Pass
---	------	------

1.2 BIOS function

Item	Description	Result	Remark
1	Press 'Del' to run Setup Utility	Pass	
2	Ctrl-Alt-Del – Soft-Reboot	Pass	
3	Save & Exit Setup	Pass	
4	Date & Time Setting	Pass	
5	Drive A	Pass	
6	Audio Mode	Pass	
7	Quick Power On Self Test	Pass	
8	Boot Device Setting	Pass	
9	Boot Up Floppy Seek	Pass	
10	Boot Up Num Lock Status	Pass	
11	USB 2.0 Controller	Pass	
12	USB Controller	Pass	
13	On Chip Primary PCI IDE	Pass	
14	On Chip Secondary PCI IDE	Pass	
15	ACPI Suspend Type	Pass	
16	PCIE LAN 1	Pass	
17	PCIE LAN 2	Pass	
18	PCIE LAN 3	Pass	
19	PCIE LAN 4	Pass	
20	USB Keyboard Support	Pass	
21	USB Mouse Support	Pass	
22	Onboard FDC Controller	Pass	
23	Soft-Off by PWRBTN	Pass	
24	Power On Function	Pass	
25	PS2MS Wakeup from S3 /S4 /S5	Pass	
26	PS2KB Wakeup from S3 /S4 /S5	Pass	

27	Wake-Up On PCI Card	Pass	
28	PWRON After PWR-Fail	Pass	
29	Resume by Alarm	Pass	
30	Watching Dog Timer Select	Pass	
31	On Chip Serial ATA	Pass	
32	SATA Mode	Pass	
33	UART Mode Select	Pass	

1.3 Driver

1. Windows 2000 SP4 Driver Test

Item	Description	Result	Remark
1	Chip set Driver	Pass	
2	VGA Driver	Pass	
3	Audio Driver	Pass	
4	LAN Driver	Pass	

2. Windows 2003 Server Standard Edition Driver Test

Item	Description	Result	Remark
1	Chip set Driver	Pass	
2	VGA Driver	N/A	
3	Audio Driver	Pass	
4	LAN Driver	Pass	

3. Windows XP SP2 Driver Test

	Description	Result	Remark
1	Chip set Driver	Pass	
2	VGA Driver	Pass	
3	Audio Driver	Pass	
4	LAN Driver	Pass	

4. LINUX SUSE 10 Driver Test

	Description	Result	Remark
1	Chip set Driver	Pass	
2	VGA Driver	Pass	
3	Audio Driver	Pass	
4	LAN Driver	Pass	

2. Compatibility test

2.1 CPU Test

Processor: Intel Pentium 4 3.40GHZ

O.S: MS-DOS 6.22

Item	Description	Result	Remark
1	CPU Type Detect	Pass	
2	CPU Speed Detect	Pass	
3	OS Running Stability	Pass	

Windows 2000

Item	Description	Result	Remark
1	CPU Type Detect	Pass	
2	CPU Speed Detect	Pass	
3	OS Running Stability	Pass	

Windows 2003 Server

Item	Description	Result	Remark
1	CPU Type Detect	Pass	
2	CPU Speed Detect	Pass	
3	OS Running Stability	Pass	

Windows XP

Item	Description	Result	Remark
1	CPU Type Detect	Pass	
2	CPU Speed Detect	Pass	
3	OS Running Stability	Pass	

LINUX Suse

Item	Description	Result	Remark
1	CPU Type Detect	Pass	
2	CPU Speed Detect	Pass	
3	OS Running Stability	Pass	

Processor: Intel Pentium 4 3.80GHZ

Windows 2000

Item	Description	Result	Remark
1	CPU Type Detect	Pass	
2	CPU Speed Detect	Pass	
3	OS Running Stability	Pass	

Windows XP

Item	Description	Result	Remark
1	CPU Type Detect	Pass	
2	CPU Speed Detect	Pass	
3	OS Running Stability	Pass	

2.2 Memory Test

1. SAMSUNG DDR2 533 1GB (K4T51083QB-ZKD5)

Item	Description	Result	Remark
1	Boot	Pass	
2	MS-DOS 6.22	Pass	
3	Windows 2000	Pass	
4	Windows 2003 Server	Pass	
5	Windows XP	Pass	
6	LINUX Suse	Pass	
7	LINUX Fedora	Pass	

2. Hynix DDR2 533 1GB (HY5PS12821)

Item	Description	Result	Remark
1	Boot	Pass	
2	MS-DOS 6.22	Pass	
3	Windows 2000	Pass	
4	Windows 2003 Server	Pass	
5	Windows XP	Pass	
6	LINUX Suse	Pass	
7	LINUX Fedora	Pass	

3. ELPIDA DDR2 533 1GB(E5108AE-6E-E)

Item	Description	Result	Remark
1	Boot	Pass	
2	MS-DOS 6.22	Pass	
3	Windows 2000	Pass	
4	Windows 2003 Server	Pass	
5	Windows XP	Pass	
6	LINUX Suse	Pass	
7	LINUX Fedora	Pass	

4. 宇瞻 DDR2 533 1GB (HYB18T512)

Item	Description	Result	Remark
1	Boot	Pass	
2	MS-DOS 6.22	Pass	
3	Windows 2000	Pass	
4	Windows 2003 Server	Pass	
5	Windows XP	Pass	
6	LINUX Suse	Pass	
7	LINUX Fedora	Pass	

5. SAMSUNG DDR2 533 512MB (K4T51083QB-GCD5)

Item	Description	Result	Remark
1	Boot	Pass	
2	MS-DOS 6.22	Pass	
3	Windows 2000	Pass	
4	Windows 2003 Server	Pass	
5	Windows XP	Pass	
6	LINUX Suse	Pass	
7	LINUX Fedora	Pass	

6. ELPIDA DDR2 533 512MB(E5108AB-5C-E)

Item	Description	Result	Remark
1	Boot	Pass	
2	MS-DOS 6.22	Pass	
3	Windows 2000	Pass	
4	Windows 2003 Server	Pass	
5	Windows XP	Pass	
6	LINUX Suse	Pass	
7	LINUX Fedora	Pass	

7. ELPIDA DDR2 667 1GB(E5108AB-6E-E)

Item	Description	Result	Remark
1	Boot	Pass	
2	MS-DOS 6.22	Pass	
3	Windows 2000	Pass	
4	Windows 2003 Server	Pass	
5	Windows XP	Pass	
6	LINUX Suse	Pass	
7	LINUX Fedora	Pass	

8. ADATA DDR2 667 1GB(AD29608A8A-3EG)

Item	Description	Result	Remark
1	Boot	Pass	
2	MS-DOS 6.22	Pass	
3	Windows 2000	Pass	
4	Windows 2003 Server	Pass	
5	Windows XP	Pass	
6	LINUX Suse	Pass	
7	LINUX Fedora	Pass	

2.3 VGA Graphic Test

1. Windows 2000

Item	Description	Result	Remark
1	Driver Install	Pass	
2	Resolution/Color Change	Pass	
3	Dual View Test	Pass	
4	CRT Display Test	Pass	
5	CRT Display Quality Test	Pass	

2. Windows XP

Item	Description	Result	Remark
1	Driver Install	Pass	
2	Resolution/Color Change	Pass	
3	Dual View Test	Pass	
4	CRT Display Test	Pass	
5	CRT Display Quality Test	Pass	

3. LINUX Suse

Item	Description	Result	Remark
1	Driver Install	Pass	
2	Resolution/Color Change	Pass	
3	CRT Display Test	Pass	
4	CRT Display Quality Test	Pass	

2.4 Audio Test

1. Windows 2000

Item	Description	Result	Remark
1	Driver Install	Pass	
2	Speaker Left	Pass	
3	Speaker Right	Pass	
4	Sound Effect	Pass	
5	Equalizer	Pass	
6	Microphone	Pass	

2. Windows 2003 Server

Item	Description	Result	Remark
1	Driver Install	Pass	
2	Speaker Left	Pass	
3	Speaker Right	Pass	
4	Sound Effect	Pass	
5	Equalizer	Pass	
6	Microphone	Pass	

3. Windows XP

Item	Description	Result	Remark
1	Driver Install	Pass	
2	Speaker Left	Pass	
3	Speaker Right	Pass	
4	Sound Effect	Pass	
5	Equalizer	Pass	
6	Microphone	Pass	

4. LINUX Suse

Item	Description	Result	Remark
1	Driver Install	Pass	
2	Speaker Left	Pass	
3	Speaker Right	Pass	
4	Microphone	Pass	

2.5 HDD Test

Model: Western Digital WD2500JB-00GVC0 250GB

1. MS-DOS 6.22

Item	Description	Result	Remark
1	HDD Size Detect	Pass	
2	HDD Read/Write	Pass	
3	HDD Partition/Format	Pass	
4	HDD LED Check	Pass	

2. Windows 2000

Item	Description	Result	Remark
1	HDD Detect	Pass	
2	HDD Read/Write	Pass	
3	HDD Data Transfer	Pass	
4	HDD Format	Pass	
5	HDD LED Check	Pass	

3. Windows 2003

Item	Description	Result	Remark
1	HDD Detect	Pass	
2	HDD Read/Write	Pass	
3	HDD Data Transfer	Pass	
4	HDD Format	Pass	
5	HDD LED Check	Pass	

4. Windows XP

Item	Description	Result	Remark
1	HDD Detect	Pass	
2	HDD Read/Write	Pass	
3	HDD Data Transfer	Pass	
4	HDD Format	Pass	
5	HDD LED Check	Pass	

5. LINUX Suse

Item	Description	Result	Remark
1	HDD Detect	Pass	
2	HDD Read/Write	Pass	
3	HDD Data Transfer	Pass	
4	HDD Format	Pass	
5	HDD LED Check	Pass	

Model: Western Digital WD1600JS-00MHB0 (SATA) 160GB

1. MS-DOS 6.22

Item	Description	Result	Remark
1	HDD Size Detect	Pass	
2	HDD Read/Write	Pass	
3	HDD Partition/Format	Pass	
5	HDD LED Check	Pass	

2. Windows 2000

Item	Description	Result	Remark
1	HDD Detect	Pass	
2	HDD Read/Write	Pass	
3	HDD Data Transfer	Pass	
4	HDD Format	Pass	
5	HDD LED Check	Pass	

3. Windows 2003

Item	Description	Result	Remark
1	HDD Detect	Pass	
2	HDD Read/Write	Pass	
3	HDD Data Transfer	Pass	
4	HDD Format	Pass	
5	HDD LED Check	Pass	

4. Windows XP

Item	Description	Result	Remark
1	HDD Detect	Pass	
2	HDD Read/Write	Pass	
3	HDD Data Transfer	Pass	
4	HDD Format	Pass	
5	HDD LED Check	Pass	

5. LINUX Suse

Item	Description	Result	Remark
1	HDD Detect	Pass	
2	HDD Read/Write	Pass	
3	HDD Data Transfer	Pass	
4	HDD Format	Pass	
5	HDD LED Check	Pass	

Model: HITACHI IC25N020ATMR04-0 20GB

1. MS-DOS 6.22

Item	Description	Result	Remark
1	HDD Size Detect	Pass	
2	HDD Read/Write	Pass	
3	HDD Partition/Format	Pass	
5	HDD LED Check	Pass	

2. Windows 2000

Item	Description	Result	Remark
1	HDD Detect	Pass	
2	HDD Read/Write	Pass	
3	HDD Data Transfer	Pass	
4	HDD Format	Pass	
5	HDD LED Check	Pass	

3. Windows 2003

Item	Description	Result	Remark
1	HDD Detect	Pass	
2	HDD Read/Write	Pass	
3	HDD Data Transfer	Pass	
4	HDD Format	Pass	
5	HDD LED Check	Pass	

4. Windows XP

Item	Description	Result	Remark
1	HDD Detect	Pass	
2	HDD Read/Write	Pass	
3	HDD Data Transfer	Pass	
4	HDD Format	Pass	
5	HDD LED Check	Pass	

5. LINUX Suse

Item	Description	Result	Remark
1	HDD Detect	Pass	
2	HDD Read/Write	Pass	
3	HDD Data Transfer	Pass	
4	HDD Format	Pass	
5	HDD LED Check	Pass	

Model:Maxtor DiamondMax Plus 9 SATA/150 120GB

1. MS-DOS 6.22

Item	Description	Result	Remark
1	HDD Size Detect	Pass	
2	HDD Read/Write	Pass	
3	HDD Partition/Format	Pass	
5	HDD LED Check	Pass	

2. Windows 2000

Item	Description	Result	Remark
1	HDD Detect	Pass	
2	HDD Read/Write	Pass	
3	HDD Data Transfer	Pass	
4	HDD Format	Pass	
5	HDD LED Check	Pass	

3. Windows 2003

Item	Description	Result	Remark
1	HDD Detect	Pass	
2	HDD Read/Write	Pass	
3	HDD Data Transfer	Pass	
4	HDD Format	Pass	
5	HDD LED Check	Pass	

4. Windows XP

Item	Description	Result	Remark
1	HDD Detect	Pass	
2	HDD Read/Write	Pass	
3	HDD Data Transfer	Pass	
4	HDD Format	Pass	
5	HDD LED Check	Pass	

5. LINUX Suse

Item	Description	Result	Remark
1	HDD Detect	Pass	
2	HDD Read/Write	Pass	
3	HDD Data Transfer	Pass	
4	HDD Format	Pass	
5	HDD LED Check	Pass	

2.6 USB Test

1. Windows 2000

Item	Description	Result	Remark
1	Device Manager Check	Pass	
2	External USB Keyboard Test	Pass	
3	External USB Mouse Test	Pass	
5	Direct Connect by USB Test	Pass	
6	Hot plugging test	Pass	

2. Windows 2003 Server

Item	Description	Result	Remark
1	Device Manager Check	Pass	
2	External USB Keyboard Test	Pass	
3	External USB Mouse Test	Pass	
5	Direct Connect by USB Test	Pass	
6	Hot plugging test	Pass	

3. Windows XP

Item	Description	Result	Remark
1	Device Manager Check	Pass	
2	External USB Keyboard Test	Pass	
3	External USB Mouse Test	Pass	
5	Direct Connect by USB Test	Pass	
6	Hot plugging test	Pass	

4. LINUX Suse

Item	Description	Result	Remark
1	Device Manager Check	Pass	
2	External USB Keyboard Test	Pass	
3	External USB Mouse Test	Pass	
5	Direct Connect by USB Test	Pass	
6	Hot plugging test	Pass	

2.7 Serial Port Test

1. Windows 2000

Item	Description	Result	Remark
1	Device Manager Check	Pass	
2	Driver Install	Pass	
3	RS-232 Mouse Test (PNP)	Pass	
4	RS-232 Modem Test (PNP)	Pass	
5	B&B Electronics COM Port RS-232 Test (W/Loop-Back)	Pass	

2. Windows 2003 Server

Item	Description	Result	Remark
1	Device Manager Check	Pass	
2	Driver Install	Pass	
3	RS-232 Mouse Test (PNP)	Pass	
4	RS-232 Modem Test (PNP)	Pass	
5	B&B Electronics COM Port RS-232 Test (W/Loop-Back)	Pass	

3. Windows XP

Item	Description	Result	Remark
1	Device Manager Check	Pass	
2	Driver Install	Pass	
3	RS-232 Mouse Test (PNP)	Pass	
4	RS-232 Modem Test (PNP)	Pass	
5	B&B Electronics COM Port RS-232 Test (W/Loop-Back)	Pass	

2.8 IrDA Test

1. Windows 2000

Item	Description	Result	Remark
1	Device Manager Check	Pass	
2	SIR Mode Data Transfer Test	Pass	
3	SIR Data Transfer Quality Test	Pass	
4	SIR Loop-Back Test	Pass	

2. Windows XP

Item	Description	Result	Remark
1	Device Manager Check	Pass	
2	SIR Mode Data Transfer Test	Pass	
3	SIR Data Transfer Quality Test	Pass	
4	SIR Loop-Back Test	Pass	

2.9 Keyboard Test

1. MS-DOS 6.22

Item	Description	Result	Remark
1	QAPLUS Keyboard Test	Pass	
2	Keyboard LED Status Test	Pass	
3	Keyboard Command Test	Pass	
4	Keyboard Typing Test	Pass	

2. Windows 2000

Item	Description	Result	Remark
1	Device Manager Check	Pass	
2	Keyboard LED Status Test	Pass	
3	Keyboard Typing Test	Pass	

3. Windows 2003 Server

Item	Description	Result	Remark
1	Device Manager Check	Pass	
2	Keyboard LED Status Test	Pass	
3	Keyboard Typing Test	Pass	

4. Windows XP

Item	Description	Result	Remark
1	Device Manager Check	Pass	
2	Keyboard LED Status Test	Pass	
3	Keyboard Typing Test	Pass	

5. LINUX Suse

Item	Description	Result	Remark
1	Device Manager Check	Pass	
2	Keyboard LED Status Test	Pass	
3	Keyboard Typing Test	Pass	

2.10 Mouse Test

1. Windows 2000

Item	Description	Result	Remark
1	Device Manager Check	Pass	
2	Mouse Detect Test (PNP)	Pass	
3	Dos Mode Mouse Test	Pass	

2. Windows 2003 Server

Item	Description	Result	Remark
1	Device Manager Check	Pass	
2	Mouse Detect Test (PNP)	Pass	
3	Dos Mode Mouse Test	Pass	

3. Windows XP

Item	Description	Result	Remark
1	Device Manager Check	Pass	
2	Mouse Detect Test (PNP)	Pass	
3	Dos Mode Mouse Test	Pass	

4. LINUX Suse

Item	Description	Result	Remark
1	Device Manager Check	Pass	
2	Mouse Detect Test (PNP)	Pass	

2.11 LAN Module Test

1. Windows 2000

Item	Description	Result	Remark
1	LAN Module Install Test	Pass	
2	Driver Install	Pass	
3	Device Manager Check	Pass	
4	Data Transfer Test	Pass	

2. Windows 2003 Server

Item	Description	Result	Remark
1	LAN Module Install Test	Pass	
2	Driver Install	Pass	
3	Device Manager Check	Pass	
4	Data Transfer Test	Pass	

3. Windows XP

Item	Description	Result	Remark
1	LAN Module Install Test	Pass	
2	Driver Install	Pass	
3	Device Manager Check	Pass	
4	Data Transfer Test	Pass	

4. LINUX Suse

Item	Description	Result	Remark
1	LAN Module Install Test	Pass	
2	Driver Install	Pass	
3	Device Manager Check	Pass	
4	Data Transfer Test	Pass	

2.12 Power Supply Test

1. MS-DOS 6.22

Item	Description	Verification	
		Result	Remark
1	ATX Power On/Off	Pass	Seven team ST-300BLV(300W)
2	ATX Power On/Off	Pass	CMT SFX-200CPS3C-TL(200W)

2. Windows 2000

Item	Description	Verification	
		Result	Remark
1	ATX Power On/Off	Pass	Seven team ST-300BLV(300w)
2	ATX Power On/Off	Pass	CMT SFX-200CPS3C-TL(200W)

3. Windows 2003 Server

Item	Description	Verification	
		Result	Remark
1	ATX Power On/Off	Pass	Seven team ST-300BLV(300W)
2	ATX Power On/Off	Pass	CMT SFX-200CPS3C-TL(200W)

4. Windows XP

Item	Description	Verification	
		Result	Remark
1	ATX Power On/Off	Pass	Seven team ST-300BLV(300W)
2	ATX Power On/Off	Pass	CMT SFX-200CPS3C-TL(200W)

5. LINUX Suse

Item	Description	Verification	
		Result	Remark
1	ATX Power On/Off	Pass	Seven team ST-300BLV(300W)
2	ATX Power On/Off	Pass	CMT SFX-200CPS3C-TL(200W)

2.13 CD-ROM Test

Model: ATAPI A52T

1. MS-DOS 6.22

Item	Description	Result	Remark
1	CD-ROM Detect	Pass	
2	CD-ROM Read	Pass	
3	CD-ROM Bootable	Pass	
4	CD-ROM Data Transfer	Pass	

2. Windows 2000

Item	Description	Result	Remark
1	CD-ROM Detect	Pass	
2	CD-ROM Read	Pass	
3	CD-ROM Data Transfer	Pass	

3. Windows 2003 Server

Item	Description	Result	Remark
1	CD-ROM Detect	Pass	
2	CD-ROM Read	Pass	
3	CD-ROM Data Transfer	Pass	

4. Windows XP

Item	Description	Result	Remark
1	CD-ROM Detect	Pass	
2	CD-ROM Read	Pass	
3	CD-ROM Data Transfer	Pass	

5. LINUX Suse

Item	Description	Result	Remark
1	CD-ROM Detect	Pass	
2	CD-ROM Read	Pass	
3	CD-ROM Data Transfer	Pass	

Model: ASUS CD-S400/A

1. MS-DOS 6.22

Item	Description	Result	Remark
1	CD-ROM Detect	Pass	
2	CD-ROM Read	Pass	
3	CD-ROM Bootable	Pass	
4	CD-ROM Data Transfer	Pass	

2. Windows 2000

Item	Description	Result	Remark
1	CD-ROM Detect	Pass	
2	CD-ROM Read	Pass	
3	CD-ROM Data Transfer	Pass	

3. Windows 2003 Server

Item	Description	Result	Remark
1	CD-ROM Detect	Pass	
2	CD-ROM Read	Pass	
3	CD-ROM Data Transfer	Pass	

4. Windows XP

Item	Description	Result	Remark
1	CD-ROM Detect	Pass	
2	CD-ROM Read	Pass	
3	CD-ROM Data Transfer	Pass	

5. LINUX Suse

Item	Description	Result	Remark
1	CD-ROM Detect	Pass	
2	CD-ROM Read	Pass	
3	CD-ROM Data Transfer	Pass	

Model: CANDY DVD COMBO (TEAC DW-224E-C)

1. MS-DOS 6.22

Item	Description	Result	Remark
1	CD-ROM Detect	Pass	
2	CD-ROM Read	Pass	
3	CD-ROM Bootable	Pass	
4	CD-ROM Data Transfer	Pass	

2. Windows 2000

Item	Description	Result	Remark
1	CD-ROM Detect	Pass	
2	CD-ROM Read	Pass	
3	CD-ROM Data Transfer	Pass	

3. Windows 2003 Server

Item	Description	Result	Remark
1	CD-ROM Detect	Pass	
2	CD-ROM Read	Pass	
3	CD-ROM Data Transfer	Pass	

4. Windows XP

Item	Description	Result	Remark
1	CD-ROM Detect	Pass	
2	CD-ROM Read	Pass	
3	CD-ROM Data Transfer	Pass	

5. LINUX Suse

Item	Description	Result	Remark
1	CD-ROM Detect	Pass	
2	CD-ROM Read	Pass	
3	CD-ROM Data Transfer	Pass	

Model: QSI DVD SDR-083

1. MS-DOS 6.22

Item	Description	Result	Remark
1	CD-ROM Detect	Pass	
2	CD-ROM Read	Pass	
3	CD-ROM Bootable	Pass	
4	CD-ROM Data Transfer	Pass	

2. Windows 2000

Item	Description	Result	Remark
1	CD-ROM Detect	Pass	
2	CD-ROM Read	Pass	
3	CD-ROM Data Transfer	Pass	

3. Windows 2003 Server

Item	Description	Result	Remark
1	CD-ROM Detect	Pass	
2	CD-ROM Read	Pass	
3	CD-ROM Data Transfer	Pass	

4. Windows XP

Item	Description	Result	Remark
1	CD-ROM Detect	Pass	
2	CD-ROM Read	Pass	
3	CD-ROM Data Transfer	Pass	

5. LINUX Suse

Item	Description	Result	Remark
1	CD-ROM Detect	Pass	
2	CD-ROM Read	Pass	
3	CD-ROM Data Transfer	Pass	

2.14 Floppy Drive Test

Model: Sony (MPF920-E)

1. MS-DOS 6.22

Item	Description	Result	Remark
1	Floppy Drive Detect	Pass	
2	Floppy Read/Write	Pass	
3	Boot from Floppy	Pass	
4	Floppy Data Transfer	Pass	

2. Windows 2000

Item	Description	Result	Remark
1	Floppy Drive Detect	Pass	
2	Floppy Read/Write	Pass	
3	Floppy Data Transfer	Pass	

3. Windows 2003 Server

Item	Description	Result	Remark
1	Floppy Drive Detect	Pass	
2	Floppy Read/Write	Pass	
3	Floppy Data Transfer	Pass	

4. Windows XP

Item	Description	Result	Remark
1	Floppy Drive Detect	Pass	
2	Floppy Read/Write	Pass	
3	Floppy Data Transfer	Pass	

5. LINUX Suse

Item	Description	Result	Remark
1	Floppy Drive Detect	Pass	
2	Floppy Read/Write	Pass	
3	Floppy Data Transfer	Pass	

2.15 Boot Up Test

Item	Description	Result	Remark
1	Soft boot from HDD	Pass	Times
2	Soft boot from CD-ROM	Pass	Times
3	Reboot test with Win 2000	Pass	Times
4	Reboot test with Win 2003 Server	Pass	Times
5	Reboot test with Win XP	Pass	Times
6	Reboot test with LINUX Fedora	Pass	Times
7	Reboot test with LINUX Suse	Pass	Times

2.16 Os Install

Item	Description	Result	Remark
1	Windows Server 2003	PASS	
2	Windows 2000 SP4	PASS	
3	Windows XP SP2	PASS	
4	Linux "Suse 10"	PASS	
5	Linux "Fedora Core4"	PASS	

2.17 Mini-PCI Card

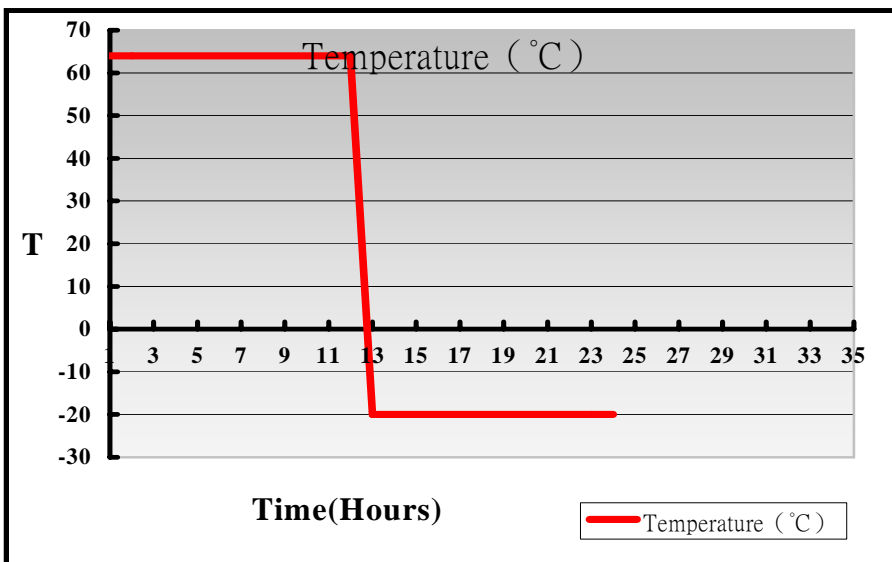
Motherboard	Mini PCI card	Result
LV-674E_D	MP-323	PASS
	MP-541D2	PASS
	MP-878D	PASS
	MP-878D2	PASS
	MP-954	PASS
	MP-60102	PASS
	MP-6100E	PASS
	MP-6816D8	PASS

3. Environmental test

3.1 Temperature Test

Hardware Device list:

System Board	LV-674
CPU	Intel Pentium 4 3.40GHZ
Memory	宇瞻 DDR2 533 1GB (HYB18T512)
HDD	Western Digital 250GB Model:WD2500JB-00GVC0
KEYBOARD	KRONE K9810
MOUSE	DCS USBMOUSE
Test Equipment	THERMOTRON 2800 Programmer/Controller
Test Program	BCM



Test Result:

Item	Description	Result	Remark
1	64°C RUN 3Dmark03	Pass	
2	-20°C Boot Test	Pass	

4. Reliability Test

4.1 Power Consumption Test

1. Test Environment:

CPU	Pentium 4 3.40GHZ
Memory	SAMSUNG DDRII 533 1GB SAMSUNG DDRII 533 1GB
HDD	Western Digital WD2500 250GB
Test OS	Windows XP
Test Program	3DMARK 2003

Test Result:

Voltae	Current (A)	Power (W)	Remark
5V	6.31	31.55	
12V	8.1	97.2	
3.3V	1.77	5.731	

2. Test Environment:

CPU	Pentium 4 3.40GHZ
Memory	SAMSUNG DDRII 667 1GB SAMSUNG DDRII 667 1GB
HDD	Western Digital WD2500 250GB
17" Monitor	ViewSonic DVI Monitor (Dual Display)
Test OS	Windows XP
Test Program	3DMARK 2003

Test Result:

Voltae	Current (A)	Power (W)	Remark
5V	6.52	32.6	
12V	9.71	116.52	
3.3V	2.18	7.194	

3.Test Environment:

CPU	Pentium 4 3.40GHZ
Memory	SAMSUNG DDRII 533 1GB SAMSUNG DDRII 533 1GB
HDD	Western Digital WD2500 250GB
CDROM	ATAPI A52T 52X
Test Program	3DMARK 2003

Test Result:

Voltae	Current (A)	Power (W)	Remark
5V	6.54	32.7	
12V	8.48	101.76	
3.3V	1.86	6.138	

4.Test Environment:

CPU	Pentium 4 3.40GHZ
Memory	SAMSUNG DDRII 533 1GB SAMSUNG DDRII 533 1GB
HDD1	Western Digital WD2500 250GB
HDD2	Maxtor DiamondMax Plus 9 120GB SATA
FDD	TEAC FD-05HG
CDROM	ATAPI A52T 52X
Test OS	Windows XP
Test Program	3DMARK 2003

Test Result:

Voltae	Current (A)	Power (W)	Remark
5V	7.66	38.3	
12V	8.71	104.52	
3.3V	1.86	6.138	

5.Test Environment:

CPU	Pentium 4 3.40GHZ
Memory	SAMSUNG DDRII 533 1GB SAMSUNG DDRII 533 1GB
HDD1	Western Digital WD2500 250GB
HDD2	Maxtor DiamondMax Plus 9 120GB SATA
FDD	TEAC FD-05HG
IrDA	ACT-IR210L
Mini-PCI WLAN	Realtek FW WMG 2501-V1.0 802.11g
CDROM	ATAPI A52T 52X
Test OS	Windows XP
Test Program	3DMARK 2003

Test Result:

Voltae	Current (A)	Power (W)	Remark
5V	7.69	38.45	
12V	8.93	107.16	
3.3V	2.06	6.798	

6.Test Environment:

CPU	Pentium 4 3.40GHZ
Memory	SAMSUNG DDRII 667 1GB SAMSUNG DDRII 667 1GB
Monitor1	HANNS · G JC151A
Monitor2	ViewSonic 17" DVI Monitor (Dual Display)
HDD1	Western Digital WD2500 250GB
HDD2	Maxtor DiamondMax Plus 9 120GB SATA
FDD	TEAC FD-05HG
IrDA	ACT-IR210L
Mini-PCI WLAN	Realtek FW WMG 2501-V1.0 802.11g
CDROM	ASUS CD-S400/A 40X
Test OS	Windows XP
Test Program	3DMARK 2003

Test Result:

Voltae	Current (A)	Power (W)	Remark
5V	7.78	38.9	
12V	9.95	119.4	
3.3V	2.48	8.184	

4.2 Thermal measurements at various points on the board

Test Environment A:

CPU	Pentium 4 3.40GHZ
Memory	SAMSUNG DDRII 533 1GB SAMSUNG DDRII 533 1GB
HDD	Western Digital WD2500 250GB
17" Monitor	ViewSonic DVI Monitor (Dual Display)
CDROM	ATAPI A52T 52X
Test Program	3DMark 2003

Test Result:

CPU	43.9°C
NB	54.9°C
SB	52.4°C
U8	56.4°C
U13	53.0°C
U25	66.9°C
L1	67.0°C

Test Environment B:

CPU	Pentium 4 3.40GHZ
Memory	SAMSUNG DDRII 533 1GB SAMSUNG DDRII 533 1GB
HDD	Western Digital WD2500 250GB
17" Monitor	ViewSonic DVI Monitor (Dual Display)
CRDROM	ATAPI A52T 52X
Test Program	Multimedia Content Creation Winstone 2004

Test Result:

CPU	42.9°C
NB	47.4°C
SB	48.7°C
U8	53.9°C
U13	52.1°C
U25	62.1°C
L1	66.2°C

5. Performance Test

5.1 Business Win Stone 2001

Processor: Intel Pentium 4 3.40GHZ

1. Windows 2000

Item	WEIGHTED SUITE	Result	Remark
1	Business Win stone 2001 Win stone 2001 Scores	Pass	66.0 61.5 63.2 61.7 63.7

5.2 Business Win Stone 2002

Processor: Intel Pentium 4 3.40GHZ

1. Windows 2000

Item	WEIGHTED SUITE	Result	Remark
1	Business Win stone 2002 Win stone 2002 Scores	Pass	32.3 31.8 31.9 31.8 32.1

2. Windows XP

Item	WEIGHTED SUITE	Result	Remark
1	Business Win stone 2002 Win stone 2002 Scores	Pass	34.1 35.0 34.3 34.4 34.1

5.3 Business Win Stone 2004

Processor: Intel Pentium 4 3.40GHZ

1. Windows 2000

Item	WEIGHTED SUITE	Result	Remark
1	Multimedia Content Creation Winstone 2003 Scores	Pass	18.1 18.6 17.2 18.6 18.6

2. Windows XP

Item	WEIGHTED SUITE	Result	Remark
1	Multimedia Content Creation Winstone 2003 Scores	Pass	10.7 11.5 15.0 14.9 12.8

5.4 Multimedia Content Creation Winstone 2004

Processor: Intel Pentium 4 3.40GHZ

1. Windows 2000

Item	WEIGHTED SUITE	Result	Remark
1	Multimedia Content Creation Winstone 2004 Scores	Pass	27.5 27.2 26.0 27.0 26.9

2. Windows XP

Item	WEIGHTED SUITE	Result	Remark
1	Multimedia Content Creation Winstone 2004 Scores	Pass	30.9 29.9 30.1 30.1 30.2

5.5 3D MARK

Processor: Intel Pentium 4 3.40GHZ

1. Windows 2000

Item	WEIGHTED SUITE	Result	Remark
1	3DMARK2001 Scores	Pass	5344
2	3DMARK2003 Scores	Pass	672
3	3DMARK2005 Scores	Pass	530

2. Windows XP

Item	WEIGHTED SUITE	Result	Remark
1	3DMARK2001 Scores	Pass	6372
2	3DMARK2003 Scores	Pass	1782
3	3DMARK2005 Scores	Pass	605

5.6 PCMARK 2002

Processor: Intel Pentium 4 3.40GHZ

2. Windows 2000

Item	WEIGHTED SUITE	Result	Remark
1	CPU Score	Pass	4357
2	Memory Score	Pass	9045
3	HDD Score	Pass	937

2. Windows XP

Item	WEIGHTED SUITE	Result	Remark
1	CPU Score	Pass	7136
2	Memory Score	Pass	11033
3	HDD Score	Pass	1438

5.7 PCMARK 2004

Processor: Intel Pentium 4 3.40GHZ

1. Windows 2000

Item	WEIGHTED SUITE	Result	Remark
1	CPU Score	Pass	4006
2	Memory Score	Pass	4614
3	HDD Score	Pass	2960
4	Graphics Score	Pass	1544

2. Windows XP

Item	WEIGHTED SUITE	Result	Remark
1	CPU Score	Pass	4801
2	Memory Score	Pass	5048
3	HDD Score	Pass	N/A
4	Graphics Score	Pass	1315

5.8 PCMARK 2005

Processor: Intel Pentium 4 3.40GHZ

1. Windows XP

Item	WEIGHTED SUITE	Result	Remark
1	CPU Score	Pass	3824
2	Memory Scores	Pass	4127
3	HDD Score	Pass	4587
	Graphics Score	Pass	1252