

Product Test Report



Product Name	LP-172
Product Version	A
Issued Date	2013.05.07
Report Edition	1.1
BIOS Version	1.0
Testing Engineer	Perry
Check Engineer	Perry

Index

1. Function test	4
1.1 Hardware function.....	4
1.2 BIOS function	5
1.3 Driver	6
2. Compatibility test	7
2.1 CPU Test.....	7
2.2 Operation System Test	7
2.3 Memory Test	8
2.4 VGA Graphic Quality Test.....	9
2.5 Audio	10
2.6 HDD Test	12
2.7 CD-ROM Test	13
2.8 USB device Test	14
2.9 Serial Port Test	17
2.10 PS2 Keyboard 、 Mouse Test.....	20
2.11 LAN Test	23
2.12 Power Supply Test	25
2.13 PCI Express mini card	25
3. Environmental test	26
3.1 Temperature Test.....	26
3.2 Thermal measurements at various points on the board	29
4. Reliability Test	31
4.1 Power Consumption Test	31
5. Performance Test	37
5.1 AQUAMARK3	37
5.2 ZD CPUMARK	37

5.3 3D MARK(2001、2003、2005) 38

5.4 3D MARK2006 38

5.5 PC MARK2002..... 39

5.6 PC MARK2004..... 39

5.7 PC MARK2005..... 40

5.8 Storage Performance 41

1. Function test

1.1 Hardware function

Base Function Test

Item	Description	Result
1	Power Button	PASS
2	Reset	PASS
3	Power LED	PASS
4	HDD LED	PASS
5	VGA	PASS
6	PS2	PASS
7	SATA	PASS
8	DDR3	PASS
9	LAN 1	PASS
10	USB 1 / 2 / 3 / 4	PASS
11	COM port 1 / 2	PASS
12	CPU Fan	PASS
13	System Fan	PASS
14	CN_LVDS	PASS
15	CN_AUDIO	PASS
16	MINI_CARD	PASS
17	CN_INV	PASS
18	DC_OUT1	PASS

Jumper

Item	Description	Result
1	JRTC	PASS
2	JAT	PASS

1.2 BIOS function

Item	Description	Result	Remark
1	Press 'Del' to run Setup Utility	PASS	
2	Ctrl-Alt-Del – Soft-Reboot	PASS	
3	Save & Exit Setup	PASS	
4	Date & Time Setting	PASS	
5	NumLock	PASS	
6	Select Language	PASS	
7	Quick Boot	PASS	
8	Console Redirection	PASS	
9	Active Processor Cores	PASS	
10	Interface Combination	PASS	
11	IGD-Boot Type (No includes SDVOD)	PASS	
12	IGD-LCD Panel type	PASS	
13	USB Per-Port Disabled Control	PASS	
14	SB Azalia Config	PASS	
15	LAN OPROM Selection	PASS	
16	Wake on PCH LAN	PASS	
17	Serial Port	PASS	
18	Watch Dog Timer Select	PASS	
19	Power Control	PASS	
20	Power On By RTC Alarm	PASS	
21	Set Supervisor Password	PASS	
22	Set User Password	PASS	

1.3 Driver

CD Edition : IPCi4-1.0

1. Windows 7 32 bit Driver Test

Item	Description	Result	version
1	Chipset Driver	PASS	9.3.0.1019
2	VGA Driver	PASS	8.14.8.1065
3	Audio Driver	PASS	6.0.1.6083
4	LAN Driver	PASS	11.14.48.0

Notice:

LP-172 only support Windows 7 32-bit.

Intel does not release the VGA driver for Windows XP, Vista, Windows Server 2000/ 2003/ 2008.

2. Compatibility test

2.1 CPU Test

Test environment:

OS Windows 7 32bit

Test program : PC MARK 2005

Spec Code	CPU Speed	Family	Processor	DMI	Smart Cache	Result
SR0D9	2.13 GHz	Atom	D2700	2.5GT/s	1 MB	PASS
SR0QB	1.86 GHz	Atom	D2550	2.5GT/s	1 MB	PASS
SR0DA	1.86 GHz	Atom	N2800	2.5GT/s	1 MB	PASS

2.2 Operation System Test

Item	Description	Result	Remark
1	Windows 7 64-bit	PASS	
2	Windows 7 32-bit	PASS	
3	Windows Server 2008 64-bit	PASS	
4	Windows Server 2008 32-bit	PASS	
5	Windows Vista 64-bit	PASS	
6	Windows Vista 32-bit	PASS	
7	Windows XP SP2 64-bit	PASS	
8	Windows XP SP2 32-bit	PASS	
9	Windows Server 2003 32-bit	PASS	
10	Ubuntu	PASS	

2.3 Memory Test

Test environment:

OS Windows 7 32 bit

Test program : PC MARK 2005

Manufacturer	Chip	Frequency	Capacity Mbytes	Result
Transcend	K4B1G0846D	DDR3 1066	1 GB	PASS
ADATA	K4B1G0846D	DDR3 1066	1 GB	PASS
Transcend	K4B1G0846D	DDR3 1066	2 GB	PASS
Kingston	D2568JENC PGD9U	DDR3 1333	4 GB	PASS

2.4 VGA Graphic Quality Test

Test environment:

OS Windows 7 32bit

Driver version : 8.14.8.1065

Resolution	Color	Result	Remark
800*600	16 / 32bit	PASS	
1024*768	16 / 32bit	PASS	
1152*864	16 / 32bit	PASS	
1280*600	16 / 32bit	PASS	
1280*720	16 / 32bit	PASS	
1280*768	16 / 32bit	PASS	
1280*800	16 / 32bit	PASS	
1280*960	16 / 32bit	PASS	
1280*1024	16 / 32bit	PASS	
1360*768	16 / 32bit	PASS	
1366*768	16 / 32bit	PASS	
1400*1050	16 / 32bit	PASS	
1440*900	16 / 32bit	PASS	
1600*900	16 / 32bit	PASS	
1680*1050	16 / 32bit	PASS	
1920*1080	16 / 32bit	PASS	

2.5 Audio

Test environment:

OS Windows XP 32 bit

Driver version : 5.10.0.6083

Item	Description	Result	Remark
1	2CH	PASS	
2	Microphone	PASS	

OS Windows XP 64 bit

Driver version : 5.10.0.6083

Item	Description	Result	Remark
1	2CH	PASS	
2	Microphone	PASS	

OS Windows SERVER 2003

Driver version : 5.10.0.6083

Item	Description	Result	Remark
1	2CH	PASS	
2	Microphone	PASS	

OS Windows Vista 32 bit

Driver version : 6.0.1.6083

Item	Description	Result	Remark
1	2CH	PASS	
2	Microphone	PASS	

OS Windows Vista 64 bit

Driver version : 6.0.1.6083

Item	Description	Result	Remark
------	-------------	--------	--------

1	2CH	PASS	
2	Microphone	PASS	

OS Windows 7 32 bit

Driver version : 6.1.0.6083

Item	Description	Result	Remark
1	2CH	PASS	
2	Microphone	PASS	

OS Windows 7 64 bit

Driver version : 6.1.0.6083

Item	Description	Result	Remark
1	2CH	PASS	
2	Microphone	PASS	

OS Windows 2008 32 bit

Driver version : 6.0.1.6083

Item	Description	Result	Remark
1	2CH	PASS	
2	Microphone	PASS	

OS Windows 2008 64 bit

Driver version : 6.0.1.6083

Item	Description	Result	Remark
1	2CH	PASS	
2	Microphone	PASS	

2.6 HDD Test

Test environment:

OS Windows 7

Model	Interface	Capacity	Size Detect	Data Transfer
Western Digital WD10EALX-009BA0	SATA	1.0 TB	PASS	PASS
Western Digital WD10EALX-009BA0	SATA	1.0 TB	PASS	PASS
MemoRjght MRSAJ6C064GC125C00	SATA	64 GB	PASS	PASS
MemoRjght MRSAD4B060GC225C00	SATA	60 GB	PASS	PASS

2.7 CD-ROM Test

Test environment:

OS Windows 7 32bit

Model	Interface	Detect	Data Transfer	Play CD
Buffalo DVSM-PC58U2V	USB	PASS	PASS	PASS
LITEON DVD SOSC-2485KX	USB	PASS	PASS	PASS

2.8 USB device Test

1. Windows XP 32 bit

Item	Result	Remark
External USB Keyboard Test	PASS	
External USB Mouse Test	PASS	
Hot plugging test	PASS	
CD ROM	PASS	
USB Mass storage	PASS	

2. Windows XP 64 bit

Item	Result	Remark
External USB Keyboard Test	PASS	
External USB Mouse Test	PASS	
Hot plugging test	PASS	
CD ROM	PASS	
USB Mass storage	PASS	

3. Windows Server 2003

Item	Result	Remark
External USB Keyboard Test	PASS	
External USB Mouse Test	PASS	
Hot plugging test	PASS	
CD ROM	PASS	
USB Mass storage	PASS	

4. Windows Vista 32 bit

Item	Result	Remark
External USB Keyboard Test	PASS	
External USB Mouse Test	PASS	
Hot plugging test	PASS	
CD ROM	PASS	
USB Mass storage	PASS	

5. Windows Vista 64 bit

Item	Result	Remark
External USB Keyboard Test	PASS	
External USB Mouse Test	PASS	
Hot plugging test	PASS	
CD ROM	PASS	
USB Mass storage	PASS	

6. Windows 7 32 bit

Item	Result	Remark
External USB Keyboard Test	PASS	
External USB Mouse Test	PASS	
Hot plugging test	PASS	
CD ROM	PASS	
USB Mass storage	PASS	

7. Windows 7 64 bit

Item	Result	Remark
External USB Keyboard Test	PASS	
External USB Mouse Test	PASS	
Hot plugging test	PASS	
CD ROM	PASS	
USB Mass storage	PASS	

8. Windows 2008 32 bit

Item	Result	Remark
External USB Keyboard Test	PASS	
External USB Mouse Test	PASS	
Hot plugging test	PASS	
CD ROM	PASS	
USB Mass storage	PASS	

9. Windows 2008 64 bit

Item	Result	Remark
External USB Keyboard Test	PASS	
External USB Mouse Test	PASS	
Hot plugging test	PASS	
CD ROM	PASS	
USB Mass storage	PASS	

2.9 Serial Port Test

1. MS-DOS

Item	Description	Result	Remark
1	RS-422 & RS-485	Pass	
2	PC Check	Pass	

2. Windows XP 32 bit

Item	Description	Result	Remark
1	Device Manager Check	PASS	
2	b&b com port test	PASS	

3. Windows XP 64 bit

Item	Description	Result	Remark
1	Device Manager Check	PASS	

4. Windows Server 2003

Item	Description	Result	Remark
1	Device Manager Check	PASS	
2	b&b com port test	PASS	

5. Windows Vista 32 bit

Item	Description	Result	Remark
1	Device Manager Check	PASS	
2	b&b com port test	PASS	

6. Windows Vista 64 bit

Item	Description	Result	Remark
1	Device Manager Check	PASS	

7. Windows 7 32 bit

Item	Description	Result	Remark
1	Device Manager Check	PASS	
2	b&b com port test	PASS	

8. Windows 7 64 bit

Item	Description	Result	Remark
1	Device Manager Check	PASS	

9. Windows 2008 32 bit

Item	Description	Result	Remark
1	Device Manager Check	PASS	

10. Windows 2008 64 bit

Item	Description	Result	Remark
1	Device Manager Check	PASS	

2.10 PS2 Keyboard 、 Mouse Test

1. MS-DOS

Item	Description	Result	Remark
1	Keyboard LED Status Test	PASS	
2	Keyboard Typing Test	PASS	
3	Mouse Detect Test	PASS	

2. Windows XP 32 bit

Item	Description	Result	Remark
1	Device Manager Check	PASS	
2	Keyboard Typing Test	PASS	
3	Mouse Detect Test	PASS	

3. Windows XP 64 bit

Item	Description	Result	Remark
1	Device Manager Check	PASS	
2	Keyboard Typing Test	PASS	
3	Mouse Detect Test	PASS	

4. Windows Server 2003

Item	Description	Result	Remark
1	Device Manager Check	PASS	
2	Keyboard Typing Test	PASS	
3	Mouse Detect Test	PASS	

5. Windows Vista 32 bit

Item	Description	Result	Remark
1	Device Manager Check	PASS	
2	Keyboard Typing Test	PASS	
3	Mouse Detect Test	PASS	

6. Windows Vista 64 bit

Item	Description	Result	Remark
1	Device Manager Check	PASS	
2	Keyboard Typing Test	PASS	
3	Mouse Detect Test	PASS	

7. Windows 7 32 bit

Item	Description	Result	Remark
1	Device Manager Check	PASS	
2	Keyboard Typing Test	PASS	
3	Mouse Detect Test	PASS	

8. Windows 7 64 bit

Item	Description	Result	Remark
1	Device Manager Check	PASS	
2	Keyboard Typing Test	PASS	
3	Mouse Detect Test	PASS	

9. Windows 2008 32 bit

Item	Description	Result	Remark
1	Device Manager Check	PASS	
2	Keyboard Typing Test	PASS	
3	Mouse Detect Test	PASS	

10. Windows 2008 64 bit

Item	Description	Result	Remark
1	Device Manager Check	PASS	
2	Keyboard Typing Test	PASS	
3	Mouse Detect Test	PASS	

2.11 LAN Test

Data Transfer Test environment:

-CAT 6 UTP 100M

-8 HR. continuous

1. Windows XP 32 bit

Item	Description	Result	Remark
1	Device Manager Check	PASS	
2	Data Transfer Test	PASS	

2. Windows XP 64 bit

Item	Description	Result	Remark
1	Device Manager Check	PASS	
2	Data Transfer Test	PASS	

3. Windows Server 2003

Item	Description	Result	Remark
1	Device Manager Check	PASS	
2	Data Transfer Test	PASS	

5. Windows Vista 32 bit

Item	Description	Result	Remark
1	Device Manager Check	PASS	
2	Data Transfer Test	PASS	

6. Windows Vista 64 bit

Item	Description	Result	Remark
1	Device Manager Check	PASS	
2	Data Transfer Test	PASS	

7. Windows 7 32 bit

Item	Description	Result	Remark
1	Device Manager Check	PASS	
2	Data Transfer Test	PASS	

8. Windows 7 64 bit

Item	Description	Result	Remark
1	Device Manager Check	PASS	
2	Data Transfer Test	PASS	

9. Windows 2008 32 bit

Item	Description	Result	Remark
1	Device Manager Check	PASS	
2	Data Transfer Test	PASS	

10. Windows 2008 64 bit

Item	Description	Result	Remark
1	Device Manager Check	PASS	
2	Data Transfer Test	PASS	

2.12 Power Supply Test

Item	TYPE	Description	Result	Remark
1	Adapter	EDAC EA10521B-050 30W	PASS	
2	ATX Power	CWT-300ATX12 300W	PASS	

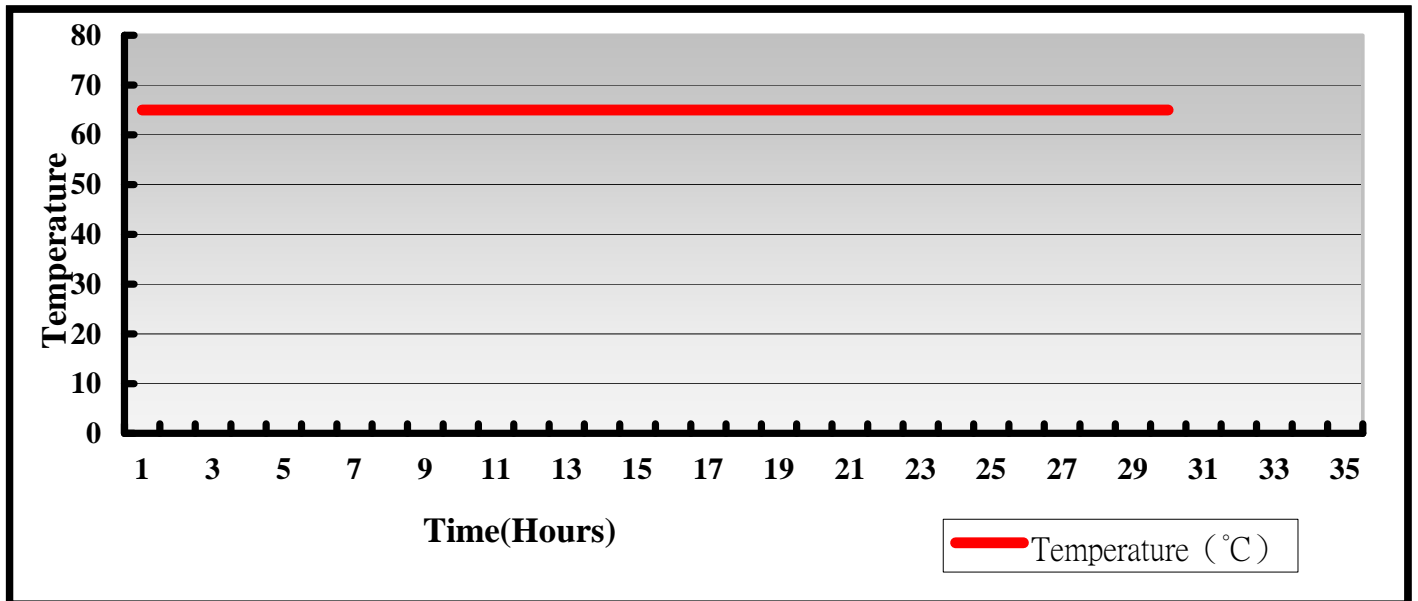
2.13 PCI Express mini card

Motherboard	PCI Express mini card	Remark
LP-172	MPX-954	PASS
	MPX-750	PASS
	MPX-954E	PASS
	MPX-827	PASS
	MPX-574D	PASS
	MPX-574D2	PASS
	MPX-643	PASS
	MPX-885	PASS
	MPX-3132	PASS
	MPX-9125	PASS
	MPX-7202	PASS
	MPX-6864	PASS
	MPX-TP4R	PASS
MPX-SDVOD	PASS	

3. Environmental test

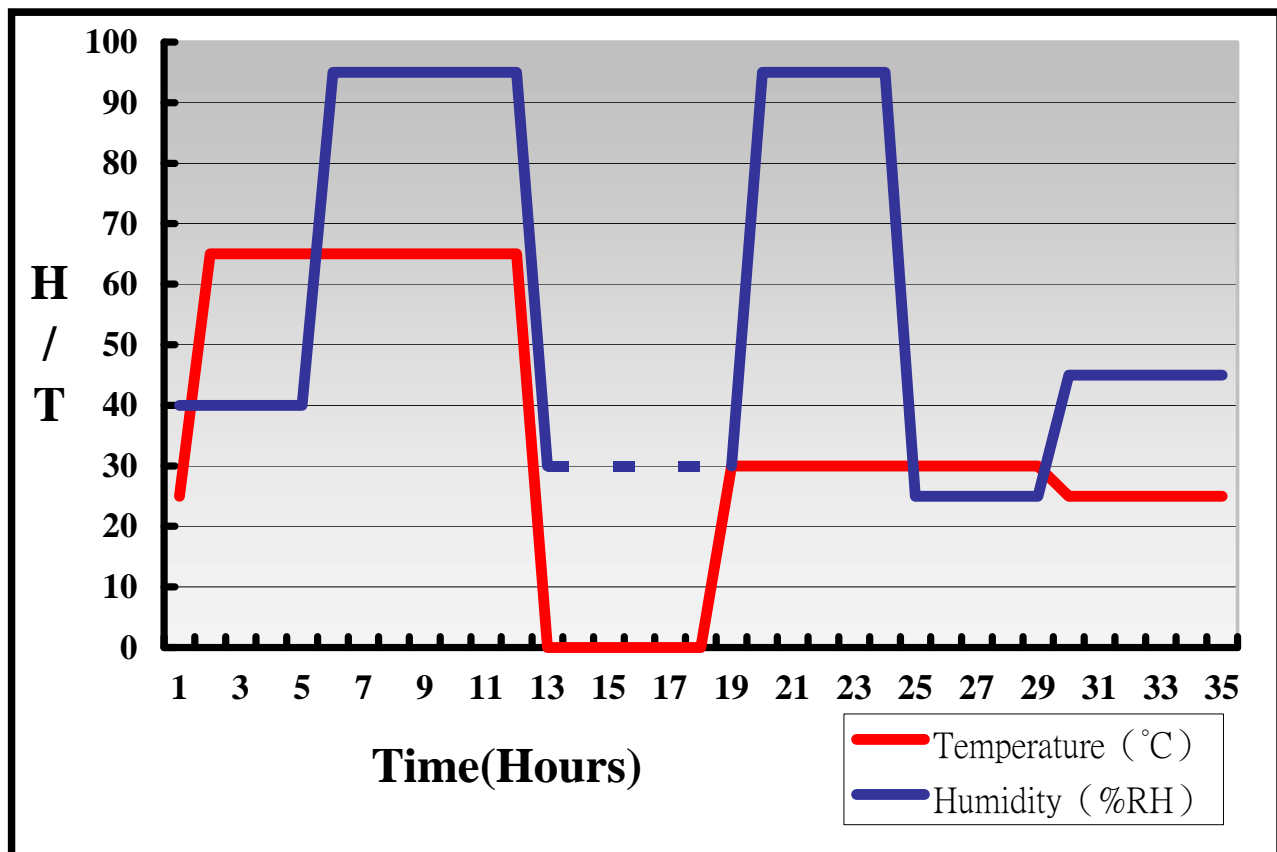
3.1 Temperature Test

System Board	LP-172
CPU	Intel® Atom™ D2700 2.13GHz
Memory	Transcend DDR3 1066 1GB (K4B1G0846D)
HDD	Western Digital WD10EARS-00Y5B1 1.0TB
Operating OS	Windows 7 32bit
Test Equipment	GIANT FORCE (GTH-150-60-CP-AR)
Test Program	3DMark 2003



Hardware Device list:

System Board	LP-172
CPU	Intel® Atom™ D2700 2.13GHz
Memory	Transcend DDR3 1066 1GB (K4B1G0846D)
HDD	Western Digital WD10EARS-00Y5B1 1.0TB
Operating OS	Windows 7 32bit
Test Equipment	GIANT FORCE (GTH-150-60-CP-AR)
Test Program	3DMark 2003



Definition : When the temperature is 30 degrees below arrive, humidity measurements have not, so by the dashed line express.

Boot Up Test:

Hardware Device list:

System Board	LP-172
CPU	Intel® Atom™ D2700 2.13GHz
Memory	Kingston DDR3 1333 4GB (D2568JENC PGD9U)

Temperature	Result	Remark
0 °C	PASS	50 Times
65 °C	PASS	50 Times

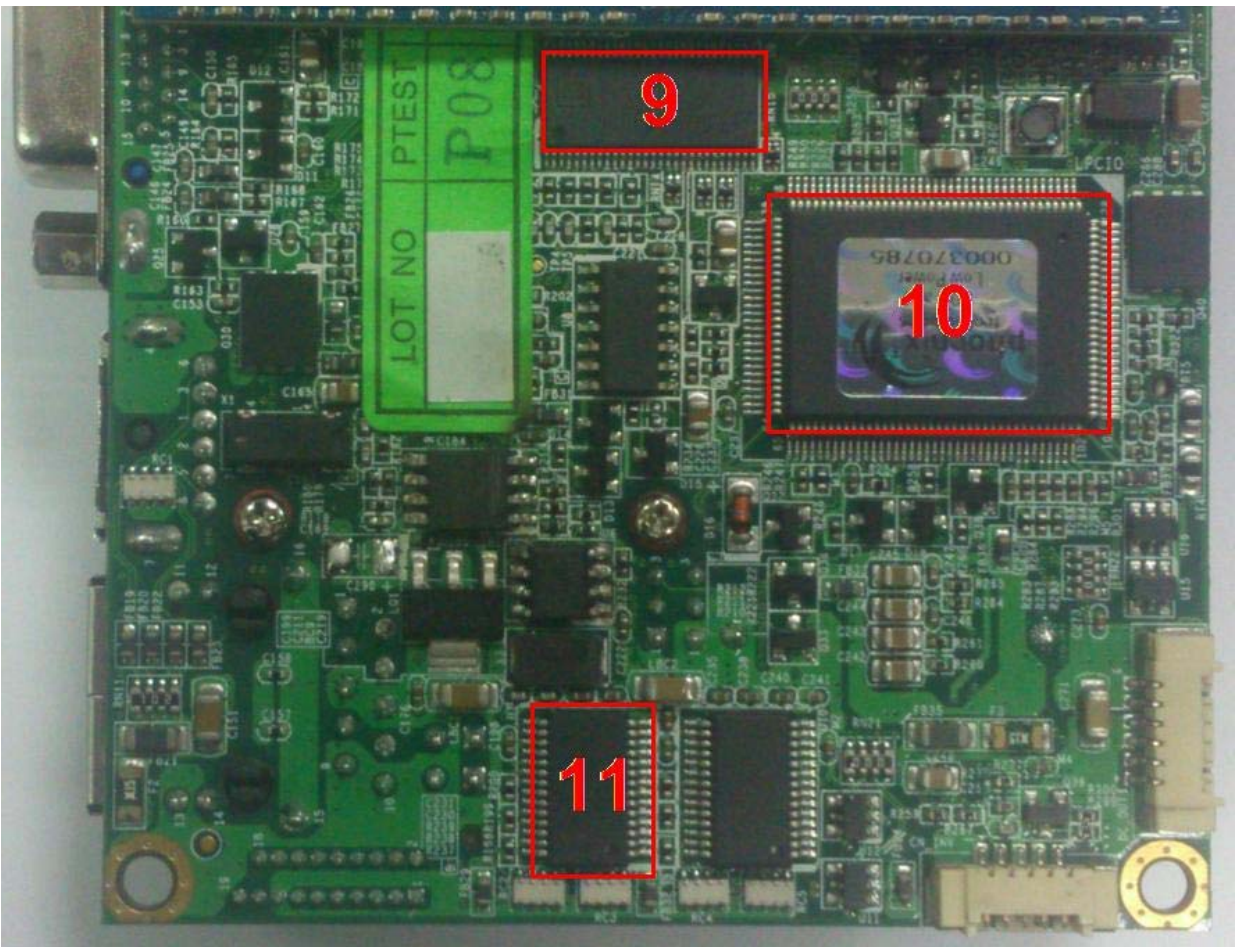
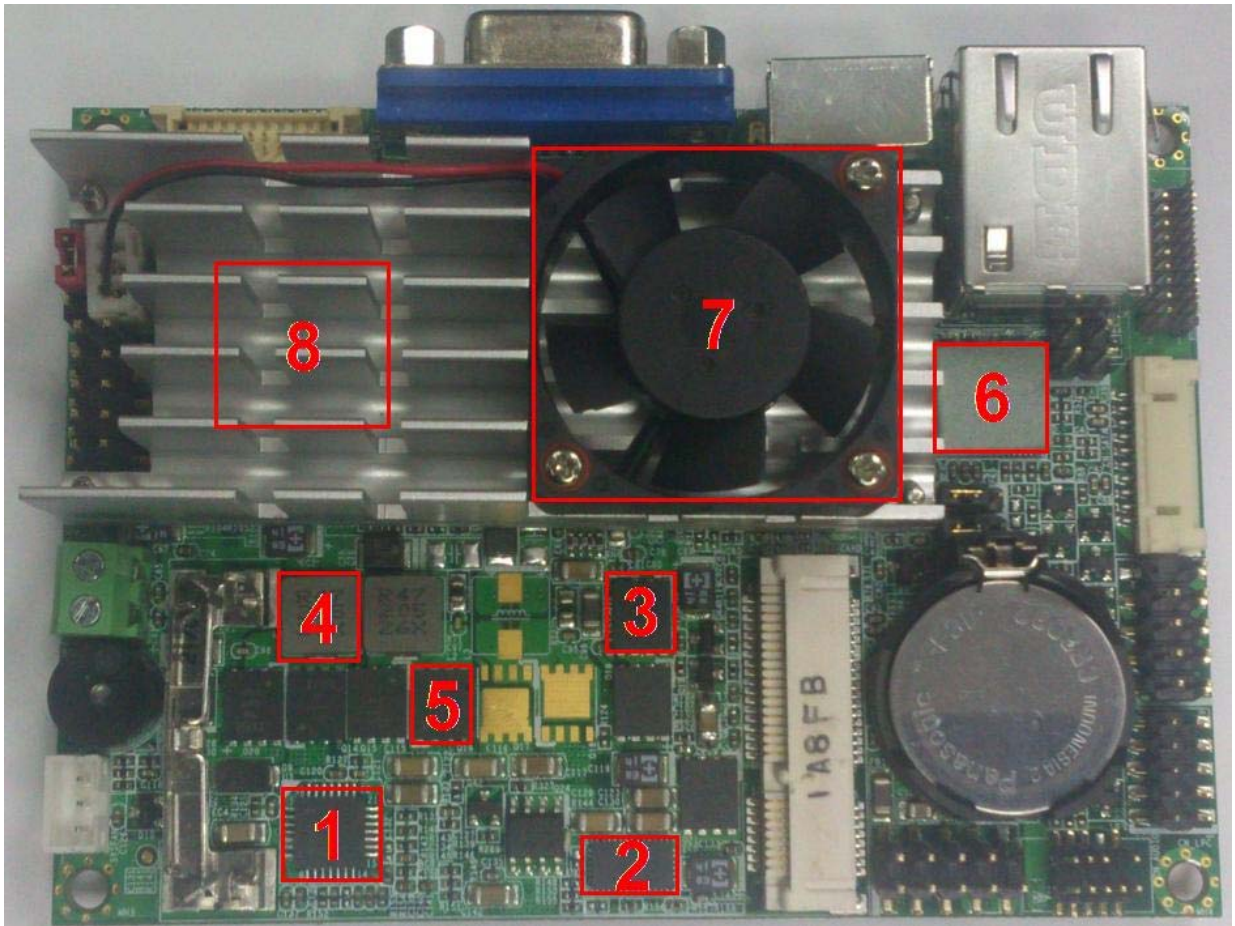
3.2 Thermal measurements at various points on the board

Test Environment :

CPU	Intel® Atom™ D2700 2.13GHz
Memory	Kingston DDR3 1333 4GB (D2568JENC PGD9U)
HDD	Western Digital WD10EARS-00Y5B1 1.0TB
Power	Channel Well CWT-300ATX12 (300W)
Operating System	Windows 7 32bit
Test Program	BurnIn 6.0

Test Result:

Item	Environmental temperature	
1	U3	51.5°C
2	U4	48.3°C
3	Q12	52.1°C
4	L1	45.5°C
5	Q16	49.8°C
6	U1	32.5°C
7	SB	37.6°C
8	CPU	38.3°C
9	U9	51°C
10	LPCIO	42.8°C
11	U7	35.4°C



4. Reliability Test

4.1 Power Consumption Test

1. Test Environment:

Motherboard	LP-172D
CPU	Intel® Atom™ D2700 2.13GHz
Memory	ADATA DDR3 1066 1GB (K4B1G0846D)

(A) Power Supply : EDAX EA 10521B-050(30W)

Voltage	MS-DOS Boot up		Windows XP SP2 64-bit 3DMARK 2003 +PRIME95	
	Current (A)	Power (W)	Current (A)	Power (W)
5V	2.65	13.25	3.62	18.10

1.a. Test Environment:

The same as above but with LCD panel

Display Panel	AUO PD035VL1(LF) 8" LCD
----------------------	--------------------------------

Power Supply : EDAX EA 10521B-050(30W)

Voltage	MS-DOS Boot up		Windows XP SP2 64-bit 3DMARK 2003 +PRIME95	
	Current (A)	Power (W)	Current (A)	Power (W)
5V	3.07	15.35	4.04	20.20

2. Test Environment:

Motherboard	LP-172D
CPU	Intel® Atom™ D2700 2.13GHz
Memory	Transcend DDR3 1066 2G (K4B1G0846D)

(A) Power Supply : EDAX EA 10521B-050(30W)

Voltage	MS-DOS Boot up		Windows XP SP2 64-bit 3DMARK 2003 +PRIME95	
	Current (A)	Power (W)	Current (A)	Power (W)
5V	2.84	14.20	3.96	19.80

2.a. Test Environment:

The same as above but with LCD panel

Display Panel	AUO PD035VL1(LF) 8" LCD
----------------------	--------------------------------

Power Supply : EDAX EA 10521B-050(30W)

Voltage	MS-DOS Boot up		Windows XP SP2 64-bit 3DMARK 2003 +PRIME95	
	Current (A)	Power (W)	Current (A)	Power (W)
5V	3.23	16.15	4.31	21.55

3.Test Environment:

Motherboard	LP-172D
CPU	Intel® Atom D2700 2.13GHz
Memory	Kingston DDR3 1333 4G (D2568JENC PGD9U)

(A)Power Supply : EDAX EA 10521B-050(30W)

Voltage	MS-DOS Boot up		Windows XP SP2 64-bit 3DMARK 2003 +PRIME95	
	Current (A)	Power (W)	Current (A)	Power (W)
5V	2.75	13.7	3.67	18.35

3.a.Test Environment:

The same as above but with LCD panel

Display Panel	AUO PD035VL1(LF) 8" LCD
----------------------	--------------------------------

Power Supply : EDAX EA 10521B-050(30W)

Voltage	MS-DOS Boot up		Windows XP SP2 64-bit 3DMARK 2003 +PRIME95	
	Current (A)	Power (W)	Current (A)	Power (W)
5V	3.13	15.65	4.05	20.25

4. Test Environment:

Motherboard	LP-172N
CPU	Intel® Atom™ N2800 1.86GHz
Memory	ADATA DDR3 1066 1GB (K4B1G0846D)

(A) Power Supply : EDAX EA 10521B-050(30W)

Voltage	MS-DOS Boot up		Windows XP SP2 64-bit 3DMARK 2003 +PRIME95	
	Current (A)	Power (W)	Current (A)	Power (W)
5V	2.38	11.90	3.23	16.15

4.a. Test Environment:

The same as above but with LCD panel

Display Panel	AUO PD035VL1(LF) 8" LCD
----------------------	--------------------------------

Power Supply : EDAX EA 10521B-050(30W)

Voltage	MS-DOS Boot up		Windows XP SP2 64-bit 3DMARK 2003 +PRIME95	
	Current (A)	Power (W)	Current (A)	Power (W)
5V	2.80	14.00	3.58	17.40

5.Test Environment:

Motherboard	LP-172N
CPU	Intel® Atom™ N2800 1.86GHz
Memory	Transcend DDR3 1066 2G (K4B1G0846D)

(A)Power Supply : EDAX EA 10521B-050(30W)

Voltage	MS-DOS Boot up		Windows XP SP2 64-bit 3DMARK 2003 +PRIME95	
	Current (A)	Power (W)	Current (A)	Power (W)
5V	2.54	12.70	3.41	17.05

5.a.Test Environment:

The same as above but with LCD panel

Display Panel	AUO PD035VL1(LF) 8” LCD
----------------------	--------------------------------

(A)Power Supply : EDAX EA 10521B-050(30W)

Voltage	MS-DOS Boot up		Windows XP SP2 64-bit 3DMARK 2003 +PRIME95	
	Current (A)	Power (W)	Current (A)	Power (W)
5V	2.93	14.65	3.79	18.95

6.Test Environment:

Motherboard	LP-172N
CPU	Intel® Atom™ N2800 1.86GHz
Memory	Kingston DDR3 1333 4G (D2568JENC PGD9U)

(A)Power Supply : EDAX EA 10521B-050(30W)

Voltage	MS-DOS Boot up		Windows XP SP2 64-bit 3DMARK 2003 +PRIME95	
	Current (A)	Power (W)	Current (A)	Power (W)
5V	2.36	11.08	3.06	15.30

6.a.Test Environment:

The same as above but with LCD panel

Display Panel	AUO PD035VL1(LF) 8” LCD
----------------------	--------------------------------

Power Supply : EDAX EA 10521B-050(30W)

Voltage	MS-DOS Boot up		Windows XP SP2 64-bit 3DMARK 2003 +PRIME95	
	Current (A)	Power (W)	Current (A)	Power (W)
5V	2.81	14.05	3.46	17.30

5. Performance Test

5.1 AQUAMARK3

Test Environment
Intel® Atom™ D2700 2.13GHz Kingston DDR3 1333 4GB (D2568JENCPGD9U) Western Digital WD10EARS-00Y5B1 1.0TB

Windows 7 32bit

Item	WEIGHTED SUITE	Result	Remark
1	GFX	Pass	1218
2	CPU	Pass	4912
3	AquaMark3 TRISCORE	Pass	10845

5.2 ZD CPUMARK

Test Environment
Intel® Atom™ D2700 2.13GHz Kingston DDR3 1333 4GB (D2568JENCPGD9U) Western Digital WD10EARS-00Y5B1 1.0TB

Windows 7 32bit

Item	WEIGHTED SUITE	Result	Remark
1	SCORE	Pass	151

5.3 3D MARK(2001、2003、2005)

Windows 7 32bit

WEIGHTED SUITE	Test Environment	Result	Remark
3DMARK2001 Score	Intel® Atom™ D2700 2.13GHz Kingston DDR3 1333 4GB (D2568JENC PGD9U) Western Digital WD10EARS-00Y5B1 1.0TB	PASS	3195
3DMARK2003 Score		PASS	2679
3DMARK2005 Score		PASS	1068

5.4 3D MARK2006

Windows 7 32bit

Item	WEIGHTED SUITE	Test Environment	Result	Remark
1	3DMARK Score	Intel® Atom™ D2700 2.13GHz Kingston DDR3 1333 4GB (D2568JENC PGD9U) Western Digital WD10EARS-00Y5B1 1.0TB	PASS	499
2	SM2.0 Score		PASS	184
3	HDR/SM3.0 Score		PASS	165
4	CPU Score		PASS	1110

5.5 PC MARK2002

Test Environment
Intel® Atom™ D2700 2.13GHz Kingston DDR3 1333 GB (D2568JENC PGD9U) Western Digital WD10EARS-00Y5B1 1.0TB

Windows 7 32bit

Item	Weighted Suite	Result	Remark
1	CPU Score	PASS	3482
2	Memory Score	PASS	8608
3	HDD Score	PASS	2984

5.6 PC MARK2004

Test Environment
Intel® Atom™ D2700 2.13GHz Kingston DDR3 1333 GB (D2568JENC PGD9U) Western Digital WD10EARS-00Y5B1 1.0TB

Windows 7 32-bit

Item	Weighted Suite	Result	Remark
1	PCMark Score	PASS	2056
2	CPU Score	PASS	1784
3	Memory Score	PASS	4168
4	Graphic Score	PASS	1062
5	HDD Score	PASS	5129

5.7 PC MARK2005

Test Environment
Intel® Atom™ D2700 2.13GHz Kingston DDR3 1333 GB (D2568JENC PGD9U) Western Digital WD10EARS-00Y5B1 1.0TB

Windows 7 32-bit

Item	Weighted Suite	Result	Remark
1	PCMark Score	PASS	N/A
2	CPU Score	PASS	2531
3	Memory Score	PASS	3393
4	Graphic Score	PASS	N/A
5	HDD Score	PASS	6017

5.8 Storage Performance

5.8.1 HDD

Test environment:

OS Windows 7

Program (HD Tune)

HDD Model	Interface	Capacity	Average	Burst Rate	Access time
Western Digital WD10EARS-00Y5B1	SATA	1.0 TB	78 MB/sec	122.4 MB/sec	15.9 ms
Western Digital WD10EALX-009BA0	SATA	1.0 TB	93.7 MB/sec	88.3 MB/sec	13.2 ms
MemoRjght MRSAJ6C064GC125C00	SATA	64 GB	156.4 MB/sec	60.2 MB/sec	0.2 ms
MemoRjght MRSAD4B060GC225C00	SATA	60 GB	109.3 MB/sec	79.5 MB/sec	0.1 ms

5.8.2 CD-ROM

Test environment:

OS Windows 7

Program (NERO)

CD-ROM Model	Interface	Average Speed	Full Read	Burst Rate	CD
Buffalo DVSM-PC58U2V	USB	11.03 x	89 ms	20 MB/s	52X CD-R
LITEON DVD SOSC-2485KX	USB	4.28 x	113 ms	19 MB/s	52 X CD-R