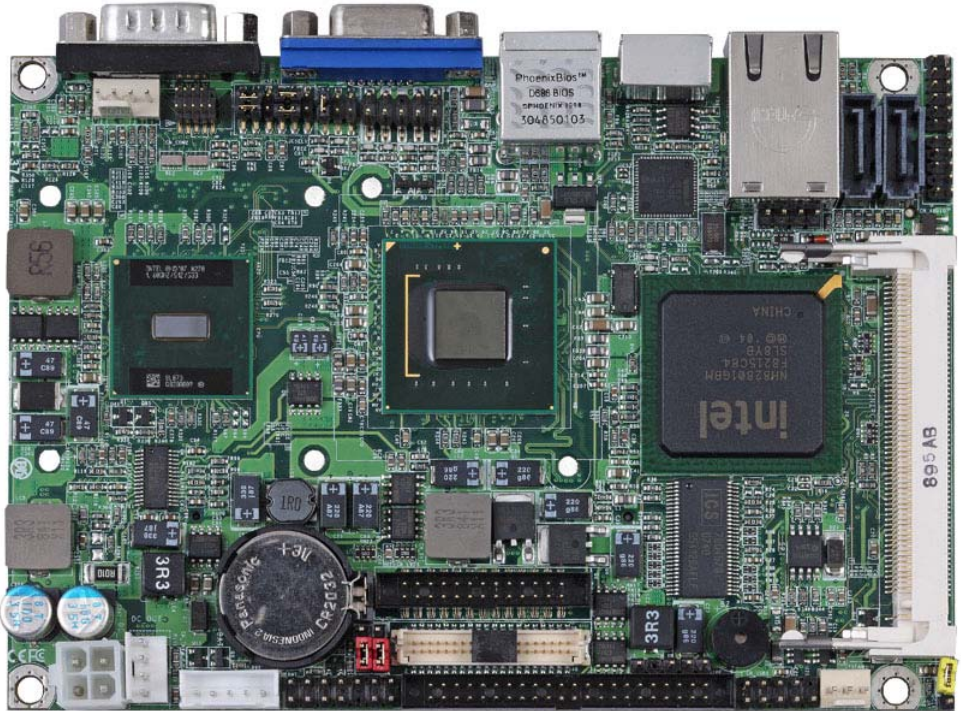


Product Test Report



Product Name	LE-374
Product Version	A
Issued Date	5. Dec.2008
Report Edition	1.0
BIOS Version	1.0
Testing Engineer	KEN

Index

Index	2
1. Function test	4
1.1 Hardware function	4
1.2 BIOS function	6
1.3 Driver	8
2. Compatibility test	10
2.1 CPU Test	10
2.2 Memory Test	10
2.3 VGA Graphic Quality Test	11
2.4 Audio	12
2.5 HDD Test	14
2.6 CD-ROM Test	15
2.7 USB Test	16
2.8 Serial Port Test	18
2.9 PS2 Keyboard 、 Mouse Test	19
2.10 LAN Test	20
2.11 Power Supply Test	21
2.12 Os Install	22
3. Environmental test	23
3.1 Temperature Test	23
3.2 Thermal measurements at various points on the board	25
4. Reliability Test	26
4.1 Power Consumption Test	26
1. Test Environment:	26
2. Test Environment:	26
3. Test Environment:	27
4. Test Environment:	28
5. Test Environment:	29
5. Performance Test	30

5.1 Business Win Stone 2002	30
5.2 Business Win Stone 2004	31
5.3 Content Creation Winstone 2003	32
5.4 Content Creation Winstone 2004	33
5.5 3D MARK(2001、2003、2005)	34
5.6 3D MARK2006	35
5.7 PC MARK2002	36
5.8 PC MARK2004	38
5.9 PC MARK2005	40
5.10 PATA Performance	42
5.11 SATA Performance	44
5.12 USB Performance	46

1. Function test

1.1 Hardware function

Base Function Test

Item	Description	Result
1	Power Button	Pass
2	Reset	Pass
3	Power LED	Pass
4	HDD LED	Pass
5	SATA1	Pass
6	SATA2	Pass
7	USB1	Pass
8	USB2	Pass
9	USB3	Pass
10	USB4	Pass
11	DDRII	Pass
12	COM1	Pass
13	COM2	Pass
14	VGA Port	Pass
15	PS2	Pass
16	AUDIO	Pass
17	CD_IN	Pass
18	Mini PCI	Pass
19	DIO	Pass
20	CPUFAN	Pass
21	SYSDAN	Pass
22	IDE	Pass
23	DVI	Pass
24	LVDS	Pass

25	LAN	Pass
26	IrDA	Pass
27	HDTV	Pass
28	CF	Pass

Jumper

Item	Description	Result
1	JRTC	Pass
2	JCSEL1	Pass
3	JCSEL2	Pass
4	JAT	Pass
5	JVLCD	Pass

1.2 BIOS function

Item	Description	Result	Remark
1	Press 'Del' to run Setup Utility	Pass	
2	Ctrl-Alt-Del – Soft-Reboot	Pass	
3	Save & Exit Setup	Pass	
4	Date & Time Setting	Pass	
5	Quick Power On Self Test	Pass	
6	Boot Device Setting	Pass	
7	Boot Up Num Lock Status	Pass	
8	ACPI Suspend Type	Pass	
9	Halt On	Pass	
10	Onboard Serial Port	Pass	
11	USB Controller	Pass	
12	USB Keyboard Support	Pass	
13	Soft-Off by PWRBTN	Pass	
14	Power On Function	Pass	
15	ACPI Function	Pass	
16	Hot Key Password	Pass	
17	Wake-up by PCI card	Pass	
18	Resume by Alarm	Pass	
19	Watch Dog Timer Select	Pass	
20	PWRON After PWR-Fail	Pass	
21	Power On by Ring	Pass	
22	Set Supervisor Password	Pass	
23	Set User Password	Pass	
24	UART Mode Select	Pass	
25	RxD , Txd Active	Pass	
26	IR Transmission Delay	Pass	
27	UR2 duplex Mode	Pass	
28	Use IR Pins	Pass	

1.3 Driver

CD Edition : IPCi 2 - 1.3

1. Windows XP SP2 Driver Test

Item	Description	Result	version
1	Chipset Driver	PASS	8.3.0.1002
2	VGA Driver	PASS	6.14.10.4847
3	Audio Driver	PASS	5.10.0.6300
4	LAN Driver	PASS	10.3.49.0

2. Windows Server 2003 Driver Test

Item	Description	Result	version
1	Chipset Driver	Pass	8.6.1.1002
2	Audio Driver	Pass	5.10.0.6300
3	LAN Driver	Pass	10.3.49.0

3. Windows Vista 32 bit Driver Test

Item	Description	Result	version
1	Chipset Driver	PASS	8.6.1.1002
2	VGA Driver	PASS	7.14.10.1409
3	Audio Driver	PASS	6.0.1.6285
4	LAN Driver	PASS	10.3.49.0

4. Windows 2000 SP4

Item	Description	Result	version
1	Chipset Driver	PASS	8.6.1.1002
2	VGA Driver	PASS	6.14.10.4906
3	Audio Driver	PASS	5.10.0.6300
4	LAN Driver	PASS	10.3.49.0

2. Compatibility test

2.1 CPU Test

Test environment:

OS Windows XP professional SP2

Test program : PC MARK 2005

Spec	CPU Speed	Family	Processor	FSB	L2 Size	Result
<u>SLB73</u>	1.60 GHz	Atom	N270	533 MHz	512 KB	PASS

2.2 Memory Test

Test environment:

OS Windows XP professional SP2

Test program : PC MARK 2005

Manufacturer	Chip	DDRII frequency	Capacity Mbytes	Memory test Source
Transcend	A3R1GE 3CFF	DDRII 800	2GB	PASS
Transcend	7PEIID9 HNL	DDRII 667	2GB	PASS
Transcend	7TE22D9 HNL	DDRII 667	2GB	PASS
PQI	7QE22D 9HNL	DDRII 667	2GB	PASS

2.3 VGA Graphic Quality Test

Test environment:

OS Windows XP professional SP2

Driver version : 6.14.10.4847

Resolution	Color	Result	
800*600	16 /32bit	PASS	
1024*768	16 /32bit	PASS	
1152*864	16 /32bit	PASS	
1280*600	16 /32bit	PASS	
1280*720	16 /32bit	PASS	
1280*768	16 /32bit	PASS	
1280*960	16 /32bit	PASS	
1280*1024	16 /32bit	PASS	
1400*1050	16 /32bit	PASS	
1600*900	16 /32bit	PASS	
1600*1200	16 /32bit	PASS	

2.4 Audio

Test envirmnt:

OS Windows XP professional SP2

Driver version : 5.10.0.6300

Item	Description	Result	
1	2 CH	PASS	
2	4 CH	PASS	
3	5.1 CH	PASS	
4	Microphone	PASS	
5	LINE	PASS	
6	CDIN	PASS	

OS Windows Server 2003

Driver version : 5.10.0.6300

Item	Description	Result	
1	2 CH	PASS	
2	4 CH	PASS	
3	5.1 CH	PASS	
4	Microphone	PASS	
5	LINE	PASS	
6	CDIN	PASS	

OS Windows 2000 SP4

Driver version : 5.10.0.6300

Item	Description	Result	
1	2 CH	PASS	
2	4 CH	PASS	
3	5.1 CH	PASS	
4	Microphone	PASS	
5	LINE	PASS	
6	CDIN	PASS	

OS Windows Vista 32 bit

Driver version : 6.0.1.6285

Item	Description	Result	
1	2 CH	PASS	
2	4 CH	PASS	
3	5.1 CH	PASS	
4	Microphone	PASS	
5	LINE	PASS	
6	CDIN	PASS	

2.5 HDD Test

Test envirimnt:

OS Windows XP professional SP2

HDD MODEL	INTERFACE	capacity	HDD Size Detect	HDD Data Transfer	HDD LED Check
Western Digital WD800JD-00LSA0	SATA	80GB	PASS	PASS	PASS
Western Digital WD800JD-75MSA3	SATA	80GB	PASS	PASS	PASS
HITACHI HDT722525 DLA380	SATA	250GB	PASS	PASS	PASS
Seagate ST3250620 AS	SATA	250GB	PASS	PASS	PASS
Western Digital WD2500JB-00REA0	PATA	250GB	PASS	PASS	PASS
Seagate ST320413A	PATA	20GB	PASS	PASS	PASS
IBM DTLA-3050 10	PATA	10.2GB	PASS	PASS	PASS

2.6 CD-ROM Test

Test envirement:

OS Windows XP professional SP2

CD-ROM MODEL	INTERFACE	CD-ROM Detect	CD-ROM Data Transfer	PLAY DVD
LG DVD GSA-H62L	SATA	PASS	PASS	PASS
PIONEER DVD PVR-212B	SATA	PASS	PASS	PASS
ASUS DVD DRW-1814BLT	SATA	PASS	PASS	PASS
BenQ 652A-6N2	PATA	PASS	PASS	PASS

2.7 USB Test

1. Windows XP SP2

Item	Result	Remark
External USB Keyboard Test	PASS	
External USB Mouse Test	PASS	
Hot plugging test	PASS	
CD ROM	PASS	
USB Mass storage	PASS	

2. Windows Server 2003

Item	Result	Remark
External USB Keyboard Test	PASS	
External USB Mouse Test	PASS	
Hot plugging test	PASS	
CD ROM	PASS	
USB Mass storage	PASS	

3. Windows 2000 SP4

Item	Result	Remark
External USB Keyboard Test	PASS	
External USB Mouse Test	PASS	
Hot plugging test	PASS	
CD ROM	PASS	
USB Mass storage	PASS	

4. Windows Vista 32 bit

Item	Result	Remark
External USB Keyboard Test	PASS	
External USB Mouse Test	PASS	
Hot plugging test	PASS	
CD ROM	PASS	
USB Mass storage	PASS	

2.8 Serial Port Test

1. MS-DOS

Item	Description	Result	Remark
1	RS-232 Mouse Test	PASS	
2	RS-422 & RS-485	PASS	
3	PC Check	PASS	
4	TS	PASS	

2. Windows Server 2003

Item	Description	Result	Remark
1	Device Manager Check	PASS	
2	RS-232 Mouse Test	PASS	
3	b&b com port test	PASS	

3. Windows XP SP2

Item	Description	Result	Remark
1	Device Manager Check	PASS	
2	RS-232 Mouse Test	PASS	
3	b&b com port test	PASS	

4. Windows Vista 32 bit

Item	Description	Result	Remark
1	Device Manager Check	PASS	
2	RS-232 Mouse Test	PASS	

2.9 PS2 Keyboard 、 Mouse Test

1. MS-DOS

Item	Description	Result	Remark
1	Keyboard LED Status Test	PASS	
2	Keyboard Typing Test	PASS	

2. Windows XP SP2

Item	Description	Result	Remark
1	Device Manager Check	PASS	
2	Keyboard Typing Test	PASS	
3	Mouse Detect Test	PASS	

3. Windows Vista 32 bit

Item	Description	Result	Remark
1	Device Manager Check	PASS	
2	Keyboard Typing Test	PASS	
3	Mouse Detect Test	PASS	

4. Windows Server 2003

Item	Description	Result	Remark
1	Device Manager Check	PASS	
2	Keyboard Typing Test	PASS	
3	Mouse Detect Test	PASS	

5. Windows 2000 SP4

Item	Description	Result	Remark
1	Device Manager Check	PASS	
2	Keyboard Typing Test	PASS	
3	Mouse Detect Test	PASS	

2.10 LAN Test

Data Transfer Test envirement:

-CAT 6 UTP 100M

-8 HR. continuous

1. Windows XP SP2

Item	Description	Result	Remark
1	Device Manager Check	PASS	
2	Data Transfer Test	PASS	

2. Windows Server 2003

Item	Description	Result	Remark
1	Device Manager Check	PASS	
2	Data Transfer Test	PASS	

3. Windows Vista 32bit

Item	Description	Result	Remark
1	Device Manager Check	PASS	
2	Data Transfer Test	PASS	

4. Windows 2000 SP4

Item	Description	Result	Remark
1	Device Manager Check	PASS	
2	Data Transfer Test	PASS	

2.11 Power Supply Test

1. MS-DOS

Item	Description	Verification	
		Result	Remark
1	ATX Power	PASS	Seventeam ST-300WAP 300W
2	ATX Power	PASS	HEC WINDMILL PRO 315W
3	AC ADAPTER	PASS	LS 0219B1280

2. Windows XP SP2

Item	Description	Verification	
		Result	Remark
1	ATX Power	PASS	Seventeam ST-300WAP 300W
2	ATX Power	PASS	HEC WINDMILL PRO 315W
3	AC ADAPTER	PASS	LS 0219B1280

3. Windows Server 2003

Item	Description	Verification	
		Result	Remark
1	ATX Power	PASS	Seventeam ST-300WAP 300W
2	ATX Power	PASS	HEC WINDMILL PRO 315W
3	AC ADAPTER	PASS	LS 0219B1280

4. Windows Vista 32 bit

Item	Description	Verification	
		Result	Remark
1	ATX Power	PASS	Seventeam ST-300WAP 300W
2	ATX Power	PASS	HEC WINDMILL PRO 315W
3	AC ADAPTER	PASS	LS 0219B1280

2.12 Os Install

	Description	Result	Remark
1	Windows Vista 32 bit	PASS	
2	Windows XP SP2	PASS	
3	Windows Server 2003	PASS	
4	Windows 2000 SP4	PASS	
5	Fedora 7 i386	PASS	
6	Ubuntu 8.04	PASS	

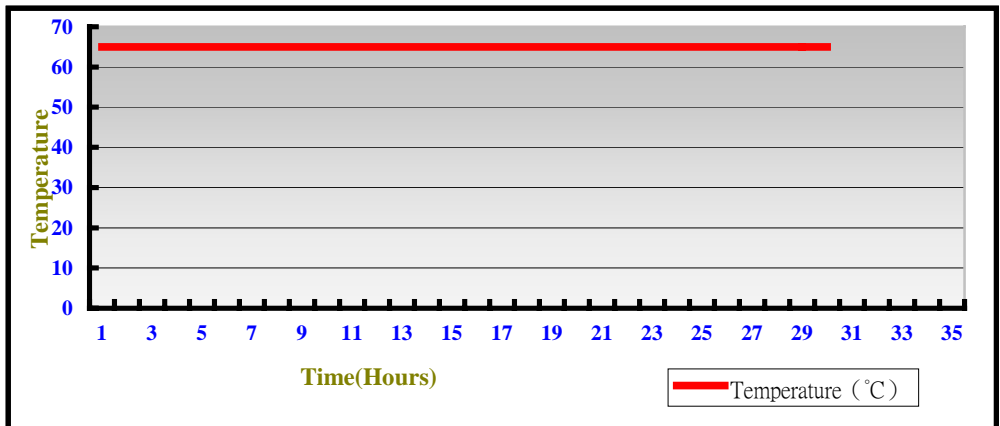
3. Environmental test

3.1 Temperature Test

Hardware Device list:

System Board	LE-374
CPU	Intel Atom N270 1.6GHZ
Memory	Transcend DDRII 800 2GB (A3R1GE3CFF)
HDD	Western Digital WD800JD-75MSA3 80GB
Operating OS	Windows XP
Test Equipment	THERMOTRON 2800 Programmer/Controller
Test Program	3DMark 2003

Test Result:



Boot Up Test:

Hardware Device list:

System Board	LE-374
CPU	Intel Atom N270 1.6GHZ
Memory	Transcend DDRII 800 2GB (A3R1GE3CFF)
HDD	Western Digital WD800JD-75MSA3 80GB

Temperature	Result	Remark
70°C	PASS	50 Times

3.2 Thermal measurements at various points on the board

Test Environment :

CPU	Intel Atom N270 1.6GHZ
Memory	Transcend DDRII 800 2GB (A3R1GE3CFF)
HDD	Western Digital WD800JD-75MSA3 80GB
Power	Seventeam ST-300WAP
Operating System	Windows XP
Test Program	3D WinMark2003

Test Result:

Environmental temperature	24°C
CPU	54.4°C
GME965 (Northbridge)	54.4°C
ICH8-M (Southbridge)	60.6°C
U3 (82574L)	52.5°C
LPCIO(83627THG)	59.7°C
U21(LTC3780)	59.5°C
Q26(7413Z)	66.5°C
U9 (ALC655)	63.6°C
U1 (ICS954128)	85.3°C

4. Reliability Test

4.1 Power Consumption Test

1. Test Environment:

Motherboard	LE-374
CPU	Intel Atom 1.6GHZ
Memory	ADATA DDRII 667 (HY5PSTG831C) 2GB
HDD	Western Digital WD800JD-75MSA3 80GB

Power : GWINSTEK SPS-3610

Voltage	MS-DOS Boot up		Windows XP SP2 3DMARK 2003	
	Current (A)	Power (W)	Current (A)	Power (W)
12V	1.84	22.08	2.11	25.32
19V	1.17	22.23	1.35	25.65
24V	0.95	22.8	1.1	26.4

2. Test Environment:

Motherboard	LE-374
CPU	Intel Atom 1.6GHZ
Memory	Transcend DDRII 800 2GB (A3R1GE3CFF)
HDD	Western Digital WD800JD-75MSA3 80GB

Power : GWINSTEK SPS-3610

Voltage	MS-DOS Boot up		Windows XP SP2 3DMARK 2003	
	Current (A)	Power (W)	Current (A)	Power (W)
12V	1.8	21.6	2.05	24.6
19V	1.36	25.84	1.32	25.08
24V	0.93	22.32	1.05	25.2

3.Test Environment:

Motherboard	LE-374
CPU	Intel Atom 1.6GHZ
Memory	Transcend DDRII 667 2GB (7PEIID9HNL)
HDD	Western Digital WD800JD-75MSA3 80GB

Power : GWINSTEK SPS-3610

Voltage	MS-DOS Boot up		Windows XP SP2 3DMARK 2003	
	Current (A)	Power (W)	Current (A)	Power (W)
12V	2.21	26.52	2.10	25.2
19V	1.23	23.57	1.34	25.46
24V	0.99	23.76	1.09	26.16

3.a.Test Environment:

The same as above but with LCD panel

Display Panel	SAMSUNG LTN106W2-L01 10.6" LCD
----------------------	---------------------------------------

Power : GWINSTEK SPS-3610

Voltage	MS-DOS Boot up		Windows XP SP2 3DMARK 2003	
	Current (A)	Power (W)	Current (A)	Power (W)
19V	1.69	32.11	1.79	34.01
24V	1.37	32.88	1.46	35.04

4. Test Environment:

Motherboard	LE-374
CPU	Intel Atom 1.6GHZ
Memory	PQI DDRII 667 2GB (7QE22D9HNL)
HDD	Western Digital WD800JD-75MSA3 80GB

Power : GWINSTEK SPS-3610

Voltage	MS-DOS Boot up		Windows XP SP2 3DMARK 2003	
	Current (A)	Power (W)	Current (A)	Power (W)
12V	2.13	25.56	2.11	25.32
19V	1.25	23.75	1.35	25.65
24V	1.01	24.24	1.1	26.4

4.a. Test Environment:

The same as above but with LCD panel

Display Panel	SAMSUNG LTN106W2-L01 10.6" LCD
----------------------	---------------------------------------

Power : GWINSTEK SPS-3610

Voltage	MS-DOS Boot up		Windows XP SP2 3DMARK 2003	
	Current (A)	Power (W)	Current (A)	Power (W)
19V	1.69	32.11	1.78	33.82
24V	1.36	32.64	1.43	34.32

5.Test Environment:

Motherboard	LE-374
CPU	Intel Atom 1.6GHZ
Memory	GREENCOM DDRII 667 1GB (E5108AGBG)
HDD	Western Digital WD800JD-75MSA3 80GB

Power : GWINSTEK SPS-3610

Voltage	MS-DOS Boot up		Windows XP SP2 3DMARK 2003	
	Current (A)	Power (W)	Current (A)	Power (W)
12V	1.95	23.4	2.12	25.44
19V	1.26	23.94	1.35	25.65
24V	1.10	26.4	1.11	26.64

5.a.Test Environment:

The same as above but with LCD panel

Display Panel	SAMSUNG LTN106W2-L01 10.6" LCD
----------------------	---------------------------------------

Power : GWINSTEK SPS-3610

Voltage	MS-DOS Boot up		Windows XP SP2 3DMARK 2003	
	Current (A)	Power (W)	Current (A)	Power (W)
19V	1.69	32.11	1.8	34.2
24V	1.4	33.6	1.47	35.28

5. Performance Test

5.1 Business Win Stone 2002

Windows XP SP2

WEIGHTED SUITE	Test Environment	Result	Remark
Business Win stone2002	Intel Atom 1.6GHZ GREENCOM DDRII 667 1GB (E5108AGBG) Western Digital WD800JD-75MSA3 80GB	Pass	23.2 23 22.5 22.9
Business Win stone2002	Intel Atom 1.6GHZ Transcend DDRII 667 2GB (7PEIID9HNL) Western Digital WD800JD-75MSA3 80GB	Pass	23.1 23.2 22.9 22.6
Business Win stone2002	Intel Atom 1.6GHZ GREENCOM DDRII 533 256MB (AET94F370) Western Digital WD800JD-75MSA3 80GB	Pass	21.3 21.2 21.2 21.1

5.2 Business Win Stone 2004

Windows XP SP2

WEIGHTED SUITE	Test Environment	Result	Remark
Business Win stone2004	Intel Atom 1.6GHZ Transcend DDRII 800 2GB (A3R1GE3CFF) Western Digital WD800JD-75MSA3 80GB	Pass	11.2 10.3 11.4 11.3
Business Win stone2004	Intel Atom 1.6GHZ Transcend DDRII 667 2GB (7PEIID9HNL) Western Digital WD800JD-75MSA3 80GB	Pass	12.3 10.4 11.1 7.6
Business Win stone2004	Intel Atom 1.6GHZ PQI DDRII 667 2GB (7QE22D9HNL) Western Digital WD800JD-75MSA3 80GB	Pass	6 12.8 11.8 11.6

5.3 Content Creation Winstone 2003

Windows XP SP2

WEIGHTED SUITE	Test Environment	Result	Remark
Content Creation Winstone 2003	Intel Atom 1.6GHZ	Pass	24.7
	PQI DDRII 667 2GB (7QE22D9HNL)		25
	Western Digital		25
	WD800JD-75MSA3 80GB		24.9
Content Creation Winstone 2003	Intel Atom 1.6GHZ	Pass	25
	Transcend DDRII 800 2GB (A3R1GE3CFF)		25
	Western Digital		24.8
	WD800JD-75MSA3 80GB		25
Content Creation Winstone 2003	Intel Atom 1.6GHZ	Pass	25.2
	Transcend DDRII 667 2GB (7PEIID9HNL)		25.1
	Western Digital		25
	WD800JD-75MSA3 80GB		25

5.4 Content Creation Winstone 2004

Windows XP SP2

WEIGHTED SUITE	Test Environment	Result	Remark
Content Creation Winstone 2004	Intel Atom 1.6GHZ	Pass	14.2
	GREENCOM DDRII 667 1GB		14.1
	(E5108AGBG)		14.1
	Western Digital WD800JD-75MSA3 80GB		14.2
Content Creation Winstone 2004	Intel Atom 1.6GHZ	Pass	14.2
	Transcend DDRII 667 2GB		14.2
	(7PEIID9HNL)		14.2
	Western Digital WD800JD-75MSA3 80GB		14.1
Content Creation Winstone 2004	Intel Atom 1.6GHZ	Pass	13.1
	GREENCOM DDRII 533 256MB		13.1
	(AET94F370)		13.1
	Western Digital WD800JD-75MSA3 80GB		13.1

5.5 3D MARK(2001、2003、2005)

Windows XP SP2

WEIGHTED SUITE	Test Environment	Result	Remark
3DMARK2001 Scores	Intel Atom 1.6GHZ Transcend DDRII 800 2GB (A3R1GE3CFF) Western Digital WD800JD-75MSA3 80GB	Pass	2867
3DMARK2003 Scores		Pass	724
3DMARK2005 Scores		Pass	242

Windows XP SP2

WEIGHTED SUITE	Test Environment	Result	Remark
3DMARK2001 Scores	Intel Atom 1.6GHZ Transcend DDRII 667 2GB (7PEIID9HNL) Western Digital WD800JD-75MSA3 80GB	Pass	2874
3DMARK2003 Scores		Pass	727
3DMARK2005 Scores		Pass	244

5.6 3D MARK2006

Windows XP SP2

Item	WEIGHTED SUITE	Test Environment	Result	Remark
1	3DMARK Source	Intel Atom 1.6GHZ Transcend DDRII 800 2GB (A3R1GE3CFF) Western Digital WD800JD-75MSA3 80GB	Pass	77
2	SM2.0 Source		Pass	35
3	HDR/SM3.0 Source		Pass	N/A
4	CPU Source		Pass	493

Windows XP SP2

Item	WEIGHTED SUITE	Test Environment	Result	Remark
1	3DMARK Source	Intel Atom 1.6GHZ Transcend DDRII 667 2GB (7PEIID9HNL) Western Digital WD800JD-75MSA3 80GB	Pass	89
2	SM2.0 Source		Pass	41
3	HDR/SM3.0 Source		Pass	N/A
4	CPU Source		Pass	493

5.7 PC MARK2002

Test Environment
Intel Atom 1.6GHZ Transcend DDRII 800 2GB (A3R1GE3CFF) Western Digital WD800JD-75MSA3 80GB

Windows XP SP2

Item	WEIGHTED SUITE	Result	Remark
1	CPU test Source	Pass	2636
2	Memory test Source	Pass	6385
3	HDD test Source	Pass	1360

Test Environment
Intel Atom 1.6GHZ Transcend DDRII 667 2GB (7PEIID9HNL) Western Digital WD800JD-75MSA3 80GB

Windows XP SP2

Item	WEIGHTED SUITE	Result	Remark
1	CPU test Source	Pass	2652
2	Memory test Source	Pass	6384
3	HDD test Source	Pass	1259

Test Environment
Intel Atom 1.6GHZ Transcend DDRII 800 2GB (A3R1GE3CFF) Western Digital WD800JD-75MSA3 80GB

Windows XP SP2

Item	WEIGHTED SUITE	Result	Remark
1	CPU test Source	Pass	2649
2	Memory test Source	Pass	6368
3	HDD test Source	Pass	1204

5.8 PC MARK2004

Test Environment
Intel Atom 1.6GHZ Transcend DDRII 800 2GB (A3R1GE3CFF) Western Digital WD800JD-75MSA3 80GB

Windows XP PS2

Item	WEIGHTED SUITE	Result	Remark
1	PCMark Source	Pass	2056
2	CPU test Source	Pass	2119
3	Memory test Source	Pass	3044
4	Graphic test Source	Pass	669
5	HDD test Source	Pass	N/A

Test Environment
Intel Atom 1.6GHZ Transcend DDRII 667 2GB (7PEIID9HNL) Western Digital WD800JD-75MSA3 80GB

Windows XP PS2

Item	WEIGHTED SUITE	Result	Remark
1	PCMark Source	Pass	2046
2	CPU test Source	Pass	2118
3	Memory test Source	Pass	3011
4	Graphic test Source	Pass	652
5	HDD test Source	Pass	4452

Test Environment

Intel Atom 1.6GHZ

Transcend DDRII 800 2GB (A3R1GE3CFF)

Western Digital WD800JD-75MSA3 80GB

Windows XP PS2

Item	WEIGHTED SUITE	Result	Remark
1	PCMark Source	Pass	2061
2	CPU test Source	Pass	2119
3	Memory test Source	Pass	3014
4	Graphic test Source	Pass	640
5	HDD test Source	Pass	4464

5.9 PC MARK2005

Intel Atom 1.6GHZ Transcend DDRII 667 2GB (7PEIID9HNL) Western Digital WD800JD-75MSA3 80GB

Windows XP SP2

Item	WEIGHTED SUITE	Result	Remark
1	System test Source	Pass	1605
2	CPU test Source	Pass	1499
3	Memory test Source	Pass	2423
4	Graphic test Source	Pass	580
5	HDD test Source	Pass	4565

Test Environment
Intel Atom 1.6GHZ PQI DDRII 667 2GB (7QE22D9HNL) Western Digital WD800JD-75MSA3 80GB

Windows XP SP2

Item	WEIGHTED SUITE	Result	Remark
1	System test Source	Pass	1654
2	CPU test Source	Pass	1498
3	Memory test Source	Pass	2422
4	Graphic test Source	Pass	617
5	HDD test Source	Pass	4575

Test Environment

Intel Atom 1.6GHZ

Transcend DDRII 800 2GB (A3R1GE3CFF)

Western Digital WD800JD-75MSA3 80GB

Windows XP SP2

Item	WEIGHTED SUITE	Result	Remark
1	System test Source	Pass	1644
2	CPU test Source	Pass	1500
3	Memory test Source	Pass	2425
4	Graphic test Source	Pass	616
5	HDD test Source	Pass	4585

5.10 PATA Performance

5.10.1 PATA HDD

Test envirement:

OS Windows XP professional SP2

Program (HDTune)

HDD MODEL	INTERFACE	capacity	Average	Burst Rate	Access time
IBM DTTA-3506 40	PATA	6GB	9.6MB/sec	28.5 MB/sec	15.5ms
HITACHI IC25N040A TMR04-0	PATA	40GB	21.5MB/sec	28.8 MB/sec	17.6ms
IBM DTTA-3510 10	PATA	10GB	9.6MB/sec	28.7 MB/sec	15.7ms
Western Digital WCANK642 2531	PATA	250GB	28.5MB/sec	27.7 MB/sec	13.4ms
Western Digital WD2500JB- 00GVC0	PATA	250GB	29.0MB/sec	27.1 MB/sec	13.4ms

5.10.2 PATA CD-ROM

Test envirement:

OS Windows XP professional SP2

Program (NERO)

CD-ROM MODEL	INTERFACE	Average speed	Fill READ	Burst Rate	CD
BenQ 652A-6N2	PATA	12.94 x	168ms	2MB/s	52 X CD-R
ASUS CB-5216A	PATA	40.03x	194ms	23MB/s	52 X CD-R
BenQ CB523C	PATA	39.57x	169ms	22MB/s	52 X CD-R

5.11 SATA Performance

5.11.1 SATA HDD

Test envirement:

OS Windows XP professional SP2

Program (HDTune)

HDD MODEL	INTERFACE	capacity	Average	Burst Rate	Access time
Seagate ST3250620 AS	SATA	250GB	50.5MB/sec	95.1 MB/sec	13.2ms
Western Digital WD800JD- 00LSA0		80GB	47.5MB/sec	94 MB/sec	18.7ms
HITACHI HDS72808 0PLA380		82.3GB	47.8MB/sec	99.8 MB/sec	13.4ms

5.11.2 SATA CD-ROM

Test envirement:

OS Windows XP professional SP2

Program (NERO)

CD-ROM MODEL	INTERFACE	Average speed	Fill READ	Burst Rate	CD
PIONEER DVD DVR-212BK	SATA	30.65 x	188 ms	40MB/s	52 X CD-R
LG DVD GSA-H62L		27.37 x	199ms	36MB/s	52X CD-R
ASUS DVD DRW-1814BLT		30.12 x	1778ms	40MB/s	52X CD-R

5.12 USB Performance

5.12.1 USB HDD

Test environment:

OS Windows XP professional SP2

Program (HDTune)

HDD MODEL	INTERFACE	capacity	Average	Burst Rate	Access time
HITACHI IC25N020A TMR04-0	USB	20GB	22.3MB/sec	19.5 MB/sec	18.7ms
HITACHI IC25N040A TCS05-0		40GB	19.9MB/sec	25.0 MB/sec	18.7ms

5.12.2 UBS CD-ROM

Test environment:

OS Windows XP professional SP2

Program (NERO)

CD-ROM MODEL	INTERFACE	Average speed	Fill READ	Burst Rate	CD
LITEON DVD SOSC-2485KX	USB	18.7 x	205ms	19MB/s	52X CD-R
LITEON DVD SOSW-833XS		18.2 x	168ms	19MB/s	52X CD-R