

MPX-24794G2

User's Manual

Edition 1.1

06/25/2012



Copyright

Copyright 2011 all rights reserved. This document is copyrighted and all rights are reserved. The information in this document is subject to change without prior notice to make improvements to the products.

This document contains proprietary information and protected by copyright. No part of this document may be reproduced, copied, or translated in any form or any means without prior written permission of the manufacturer.

All trademarks and/or registered trademarks contains in this document are property of their respective owners.

Disclaimer

The company shall not be liable for any incidental or consequential damages resulting from the performance or use of this product.

The company does not issue a warranty of any kind, express or implied, including without limitation implied warranties of merchantability or fitness for a particular purpose.

The company has the right to revise the manual or include changes in the specifications of the product described within it at any time without notice and without obligation to notify any person of such revision or changes.

Trademark

All trademarks are the property of their respective holders.

Any questions please visit our website at <http://www.commell.com.tw>.

Packing List:

Hardware:

MPX-24794G2 Mini PCI Express USB-GPIO Card x1

Optional Cables

	<p>1x20 DF14 P=1.25mm to 20x1 DF14 P=2.54mm; 28 AWG</p> <ul style="list-style-type: none">* OAL-24794S-CN1* CN_GPIO1
	<p>1x20 DF14 P=1.25mm to 18x1 DF14 P=2.54mm; 28 AWG</p> <ul style="list-style-type: none">* OAL-24794S-CN2* CN_GPIO2

	<p>1x20 to 20x1 P=2.54mm test pins; 1x18 to 2x header; 28 AWG * OAL-24794S-ADP * CN_GPIO1 * CN_GPIO2 * ADP-GPIO isolation cards</p>
	<p>1 x 4 DF14 to 1 x 4 P=2.54 HSG * OALUSB-H4 * CN_USB</p>
	<p>1 x 4 DF14 to USB * LUSB-H4-1 * CN_USB</p>

Please refer to the cable mechanic drawing files for detail cable

drawing information.

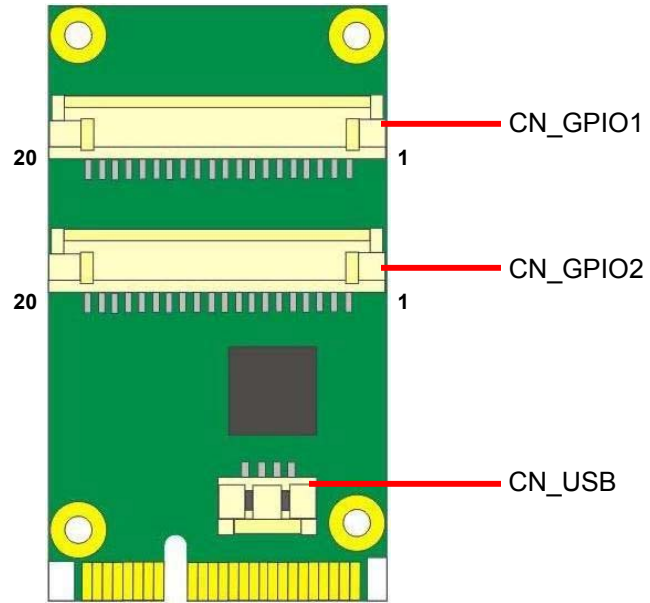
CD Content:

- * This User's Manual
- * Device Drivers for Windows 2000, Windows XP (32-/64-bit), Windows Vista (32-/64-bit), Windows 7 (32-/64-bit)
- * Software Programmer's Manual
- * OAL-USB-H4.PDF – Mechanical drawing file
- * OAL-USB-H4-1.PDF – Mechanical drawing file
- * OAL-24794S-CN1.PDF – Mechanical drawing file
- * OAL-24794S-CN2.PDF – Mechanical drawing file
- * OAL-24794S-ADP.PDF – Mechanical drawing file

1.0 <Product Specification>

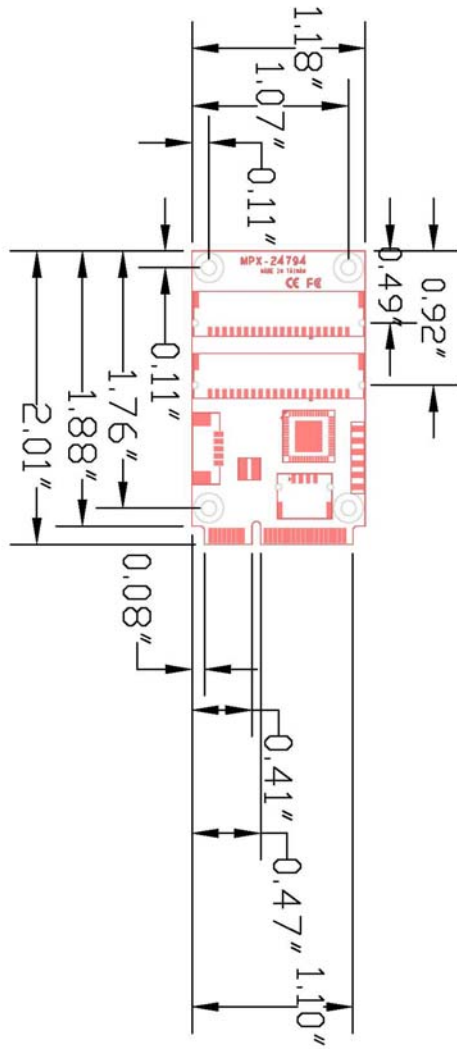
General Specification	
Form Factor	PCI Express mini card
Controller	CYPRESS CY24794-24LTXI controller
Interface	USB 2.0
Features	USB 2.0 Full Speed Plug and Play Support Programmable 32-bit GPI)
Power Requirement	USB +5V bus power
OS Support	Windows XP 32/64-bit , Windows 7 32/64-bit
Dimensions (L x W)	51mm x 30mm

1.1 <Component Placement>



1.2 <Mechanical Drawing>

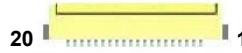
Unit: inch



1.3 <Connector Reference>

Connector: CN_GPIO1

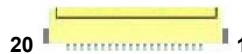
Type: DF14 20-pin pitch=1.25mm



Pin	Description	Pin	Description
1	GND	2	GND
3	+5V	4	+5V
5	GPIO0 P0[0]	6	GPIO1 P0[1]
7	GPIO2 P0[2]	8	GPIO3 P0[3]
9	GPIO4 P0[4]	10	GPIO5 P0[5]
11	GPIO6 P0[6]	12	GPIO7 P0[7]
13	GPIO8 P2[0]	14	GPIO9 P2[1]
15	GPIO10 P2[2]	16	GPIO11 P2[3]
17	GPIO12 P2[4]	18	GPIO13 P2[5]
19	GPIO14 P2[6]	20	GPIO15 P2[7]

Connector: CN_GPIO2

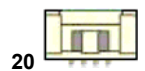
Type: DF14 20-pin pitch=1.25m



Pin	Description	Pin	Description
1	GPIO16 P3[0]	2	GPIO17 P3[1]
3	GPIO18 P3[2]	4	GPIO19 P3[3]
5	GPIO20 P3[4]	6	GPIO21 P3[5]
7	GPIO22 P3[6]	8	GPIO23 P3[7]
9	GPIO24 P4[0]	10	GPIO25 P4[1]
11	GPIO26 P4[2]	12	GPIO27 P4[3]
13	GPIO28 P4[4]	14	GPIO29 P4[5]
15	GPIO30 P4[6]	16	GPIO31 P4[7]
17	N/C	18	N/C
19	GND	20	GND

Connector: CN_USB

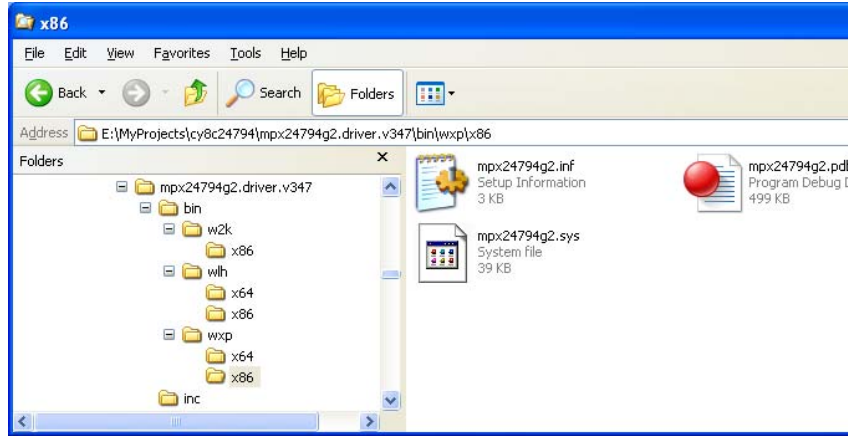
Type: DF14 4-pin pitch=1.25mm



Pin	Description	Pin	Description
1	+5V	2	DM
3	DP	4	GND

1.4 <Driver Setting>

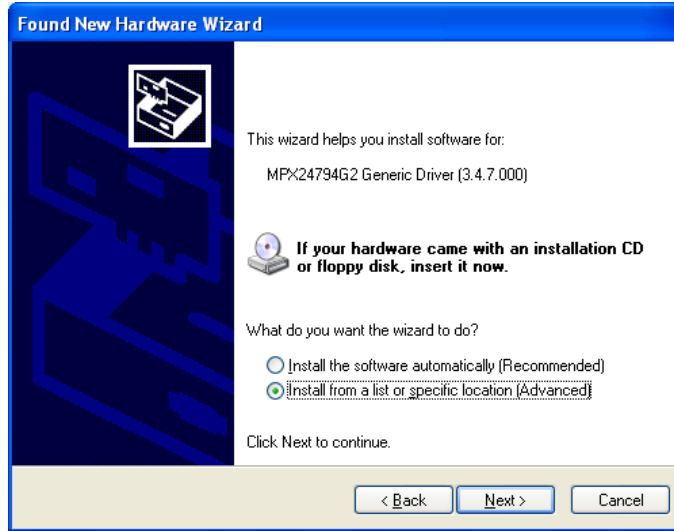
1. Driver folders and insert your MPX24794G2 card



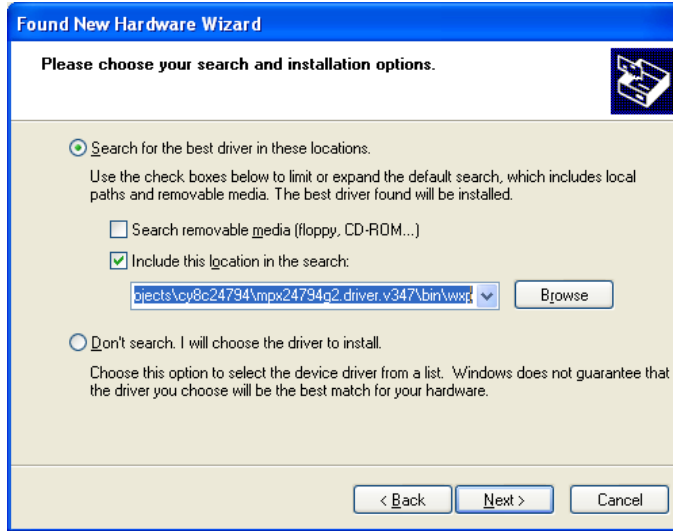
2. Please choose **NO** , not this time press next



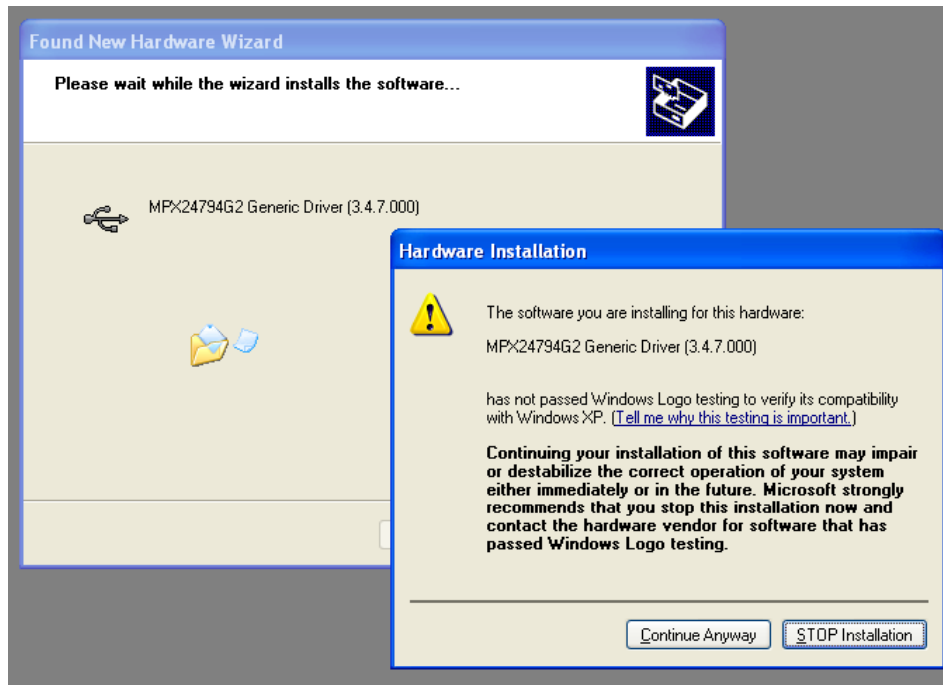
3. Please choose **Install from a list on specific Location
press next**



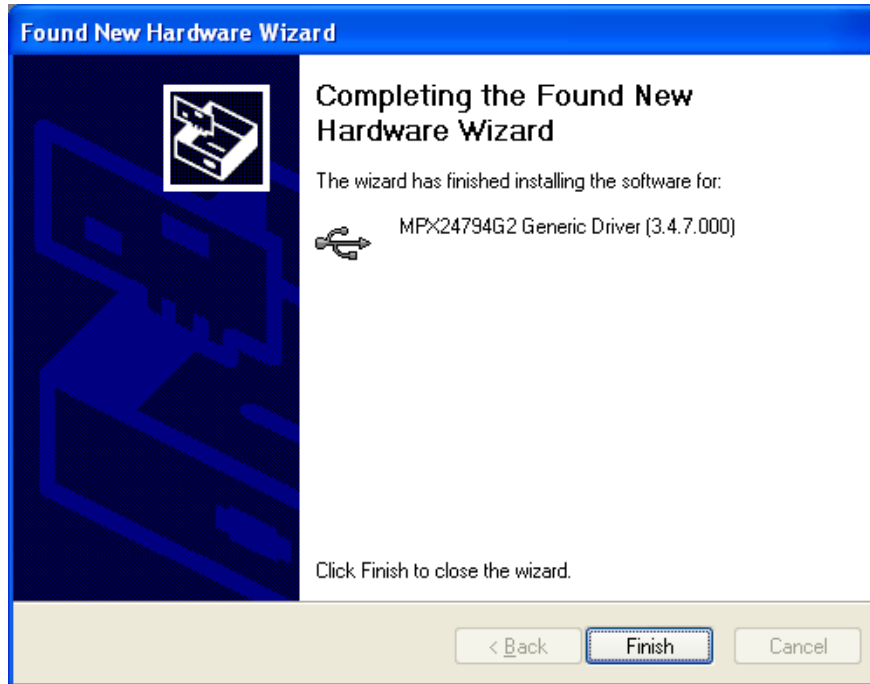
**4. Please select file location
..\mpx24794g2.driver.v347\bin\wxplx86
then press next (for example)**



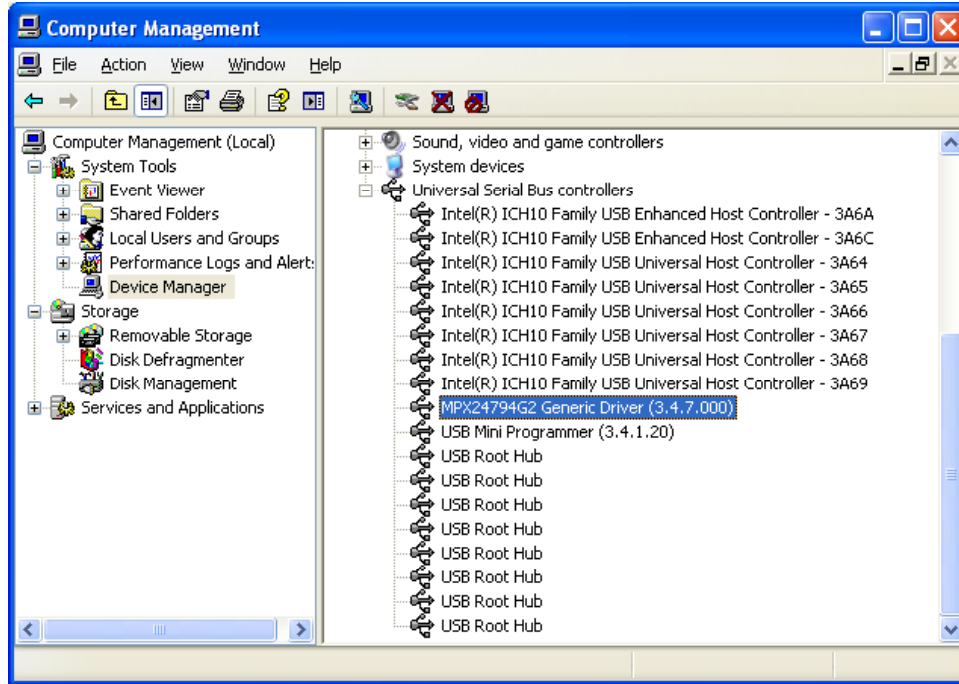
5. Continue Anyway



6. Finish

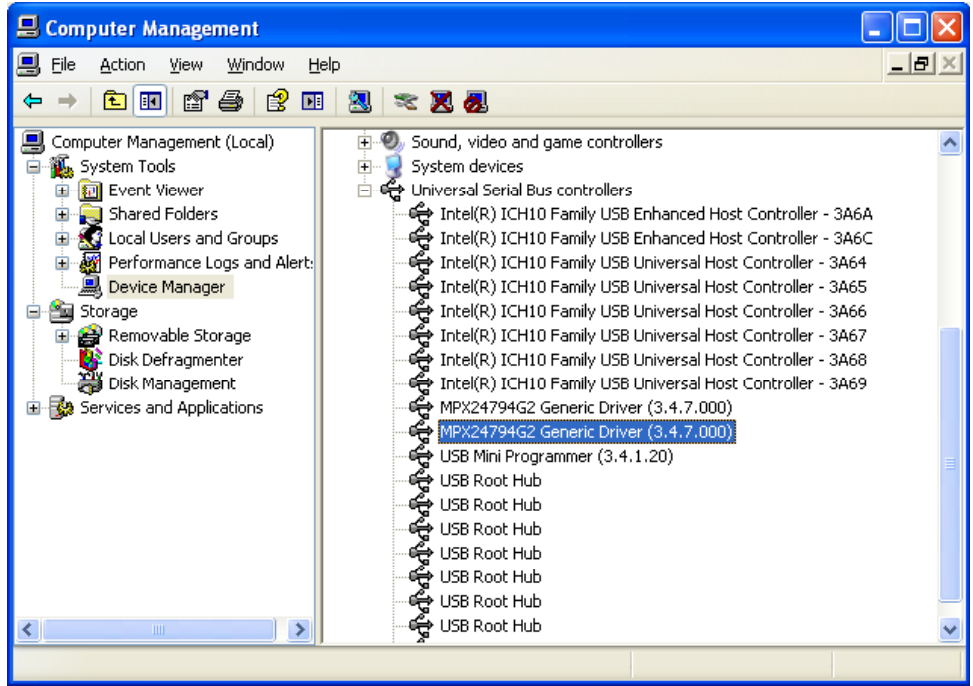


7. Device Manager shows



6. Two MPX24794G2 cards

Repeat the above steps if you have more than one MPX24794G2 card. Each MPX24794G2 card has its own item shown in the Device Manager.



Contact Information

Any advice or comment about our products and service, or anything we can help you please don't hesitate to contact with us. We will do our best to support you for your products, projects and business.

Taiwan Commate Computer Inc.

Address	19F., .94, Sec. 1, Xintai 5th Rd., Xizhi Dist., New Taipei City 22102, Taiwan (R.O.C.)
TEL	+886-2-26963909
FAX	+886-2-26963911
Website	http://www.commell.com.tw
E-Mail	info@commell.com.tw (General Information) tech@commell.com.tw (Technical Support)

Commell is the trademark of Taiwan Commate Computer INC.