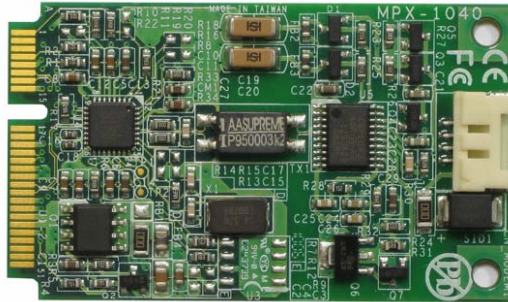


MPX-1040

User's Manual

Edition 1.0

2010/08/24



Copyright

Copyright 2010 all rights reserved. This document is copyrighted and all rights are reserved. The information in this document is subject to change without prior notice to make improvements to the products.

This document contains proprietary information and protected by copyright. No part of this document may be reproduced, copied, or translated in any form or any means without prior written permission of the manufacturer.

All trademarks and/or registered trademarks contains in this document are property of their respective owners.

Disclaimer

The company shall not be liable for any incidental or consequential damages resulting from the performance or use of this product.

The company does not issue a warranty of any kind, express or implied, including without limitation implied warranties of merchantability or fitness for a particular purpose.

The company has the right to revise the manual or include changes in the specifications of the product described within it at any time without notice and without obligation to notify any person of such revision or changes.

Trademark

All trademarks are the property of their respective holders.

Any questions please visit our website at <http://www.commell.com.tw>.

Packing List:

Hardware:

MPX-1040 56K modem PCI Express mini card x 1

ADP-RJ11 module x 1

Cable Kit:



**DF14-4 Pin to DF14-4 Pin
(OALRJ11-H4-L20)**

CD Content:

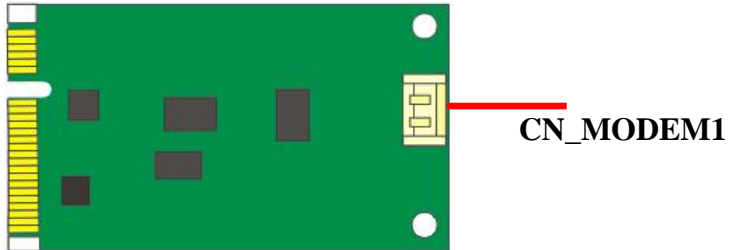
Driver & User's Manual

1.0 <Product Specification>

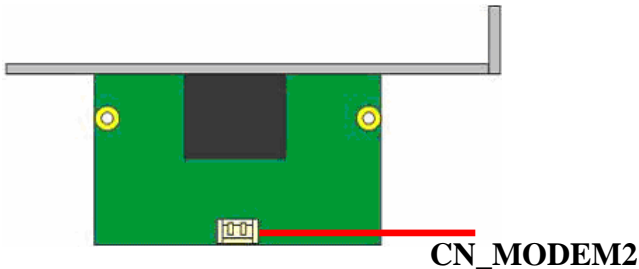
General Specification	
Form Factor	PCI Express mini card
Features	Supports ITU-T V.92/V.90/V.34 data. FAX mode rates up to ITU-T V.17: 14400 bits/s, 12000 bits/s, Support Wake On Ring(Wake)
Dimensions (W x D)	30.00mm x 50.95mm

1.1 < Component Placement >

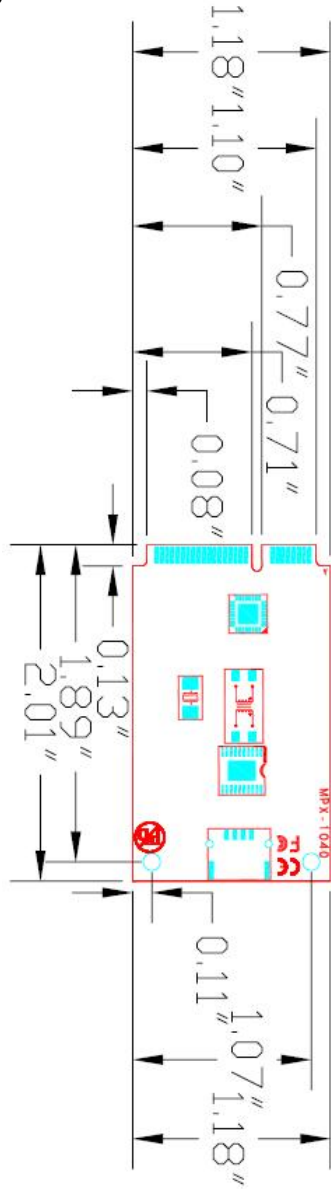
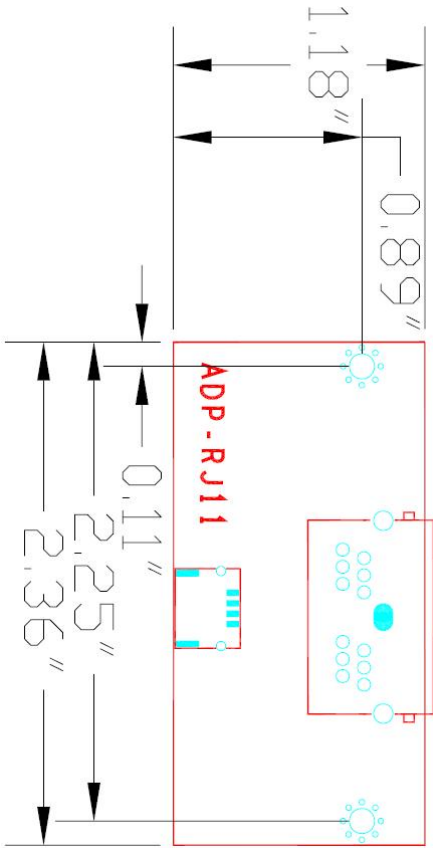
MPX-1040:



ADP-RJ11:



1.2 <Mechanical Drawing>

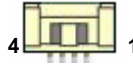


Unit: inch

1.3 <Connector Reference>

Connector: CN_MODEM1

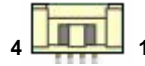
Type: DF14 4-pin pitch=1.25mm



Pin	Description	Pin	Description
1	NC	2	RING
3	TIP	4	NC

Connector: CN_MODEM2

Type: DF14 4-pin pitch=1.25mm



Pin	Description	Pin	Description
1	NC	2	RING
3	TIP	4	NC

ADP-RJ11:



Contact Information

Any advice or comment about our products and service, or anything we can help you please don't hesitate to contact with us. We will do our best to support you for your products, projects and business.

Taiwan Commate Computer Inc.

Address	19F., No.94, Sec. 1, Xintai 5th Rd., Xizhi Dist., New Taipei City 22102, Taiwan
TEL	+886-2-26963909
FAX	+886-2-26963911
Website	http://www.commell.com.tw
E-Mail	info@commell.com.tw (General Information) tech@commell.com.tw (Technical Support)
Facebook	https://www.facebook.com/pages/Taiwan-Commate-Computer-Inc/54799395271899
Twitter	https://twitter.com/Taiwan_Commate

Commell is the trademark of Taiwan Commate Computer INC.