

MP-9200

User's Manual

Edition 1.0

2008/7/3



Copyright

Copyright 2008 all rights reserved. This document is copyrighted and all rights are reserved. The information in this document is subject to change without prior notice to make improvements to the products.

This document contains proprietary information and protected by copyright. No part of this document may be reproduced, copied, or translated in any form or any means without prior written permission of the manufacturer.

All trademarks and/or registered trademarks contains in this document are property of their respective owners.

Disclaimer

The company shall not be liable for any incidental or consequential damages resulting from the performance or use of this product.

The company does not issue a warranty of any kind, express or implied, including without limitation implied warranties of merchantability or fitness for a particular purpose.

The company has the right to revise the manual or include changes in the specifications of the product described within it at any time without notice and without obligation to notify any person of such revision or changes.

Trademark

All trademarks are the property of their respective holders.

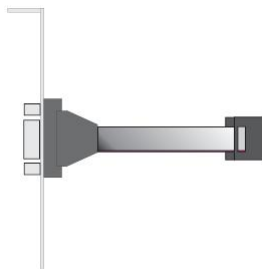
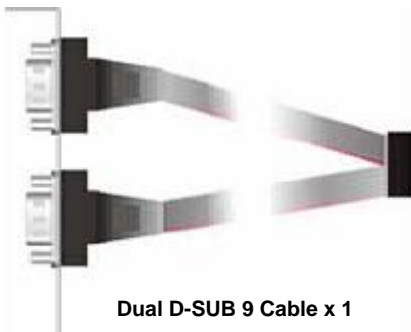
Any questions please visit our website at <http://www.commell.com.tw>.

Packing List:

Hardware:

MP-9200 Mini-PCI Capture Card x1

Cable kit:



CD Content:

Drivers & User's Manual

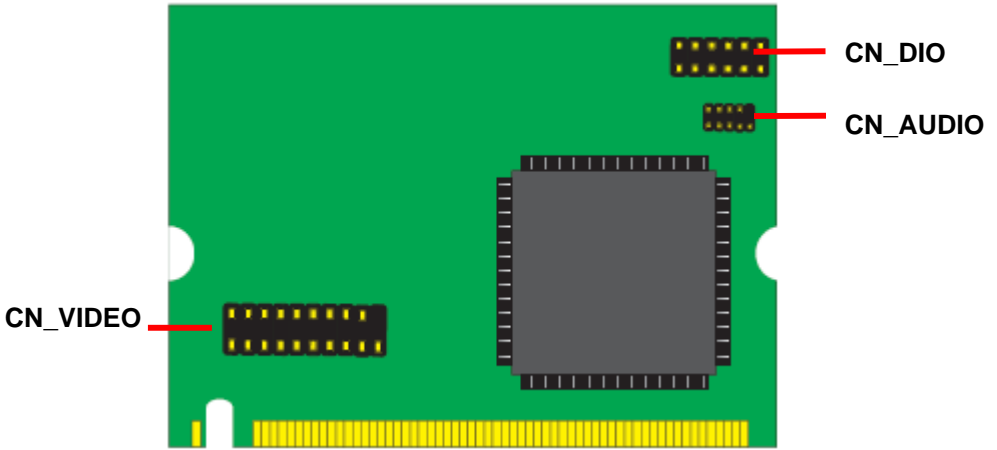
1.0 <Product Specification>

General Specification	
Form Factor	Mini- PCI form factor Type-III B with 124-pin interface
Controller	One MV9200 chip onboard
Accessories	1 x 20-pin header to 2 x D-sub 9 Cable 1 x 10-pin header to 1 x D-sub 9 Cable 2 x D-sub 9 to 8 x BNC connector Cable 1 x D-sub 9 to 2 channel Audio Cable
Features	16 channel video inputs share with 120 fps Support NTSC/PAL video decoding Support image capture resolutions up to 768 x 576 (PAL) 720 x 480 (NTSC)
Dimensions (L x W)	60mm x 45mm
Ordering Code	
MP-9200	16 ch video and 2 ch audio input with SDK provided
MP-9200A	16 ch video and 2 ch audio input with Scode DVR program

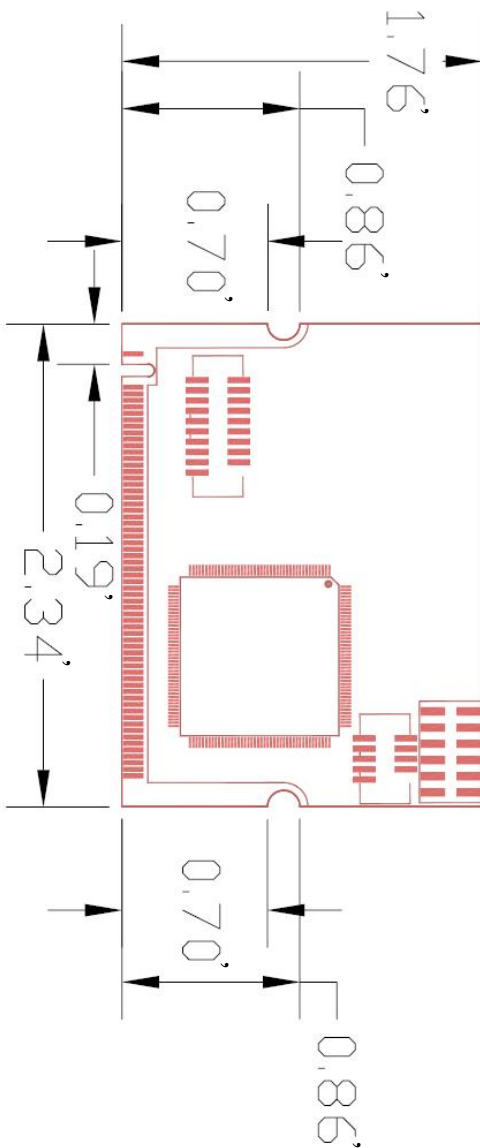
Recording & monitor

Input	Resolution	Frame rate
4 Channel	D1	15 fps/per channel
	CIF	30 fps/per channel
8 Channel	D1	7.5 fps/per channel
	CIF	15 fps/per channel
12 Channel	D1	5 fps/per channel
	CIF	10 fps/per channel
16 Channel	D1	3.75 fps/per channel
	CIF	7.5 fps/per channel

1.1 <Component Placement>



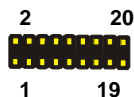
1.2 <Mechanical Drawing>



1.3 <Connector Reference>

Connector: CN_VIDEO

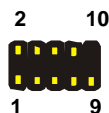
Type: 20-pin (10x2) header



Pin	Description	Pin	Description
1	VIEDO1	2	VIDEO2
3	VIEDO3	4	VIEDO4
5	Ground	6	VIEDO5
7	VIEDO6	8	VIEDO7
9	VIEDO8	10	N/C
11	VIEDO9	12	VIEDO10
13	VIEDO11	14	VIEDO12
15	Ground	16	VIEDO13
17	VIEDO14	18	VIEDO15
19	VIEDO16	20	N/C

Connector: CN_AUDIO

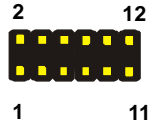
Type: 10-pin (5x2) header



Pin	Description	Pin	Description
1	CH1	2	CH2
3	N/C	4	N/C
5	GND	6	N/C
7	N/C	8	N/C
9	N/C		

Connector: CN_DIO

Type: 12-pin (6x2) header



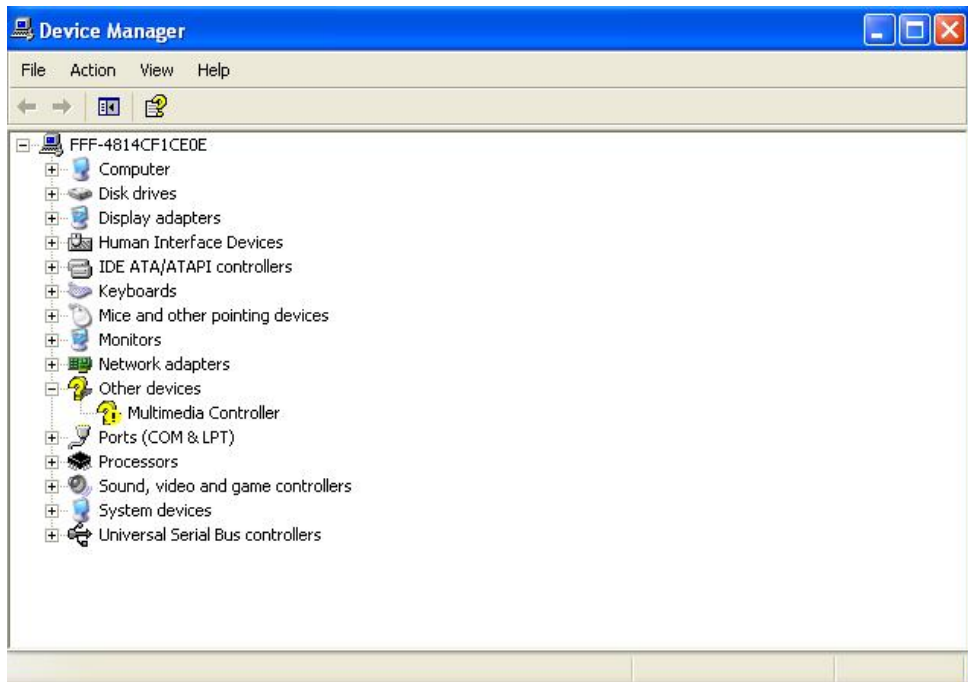
Pin	Description	Pin	Description
1	GND	2	GND
3	IO1	4	IO5
5	IO2	6	IO6
7	IO3	8	IO7
9	IO4	10	IO8
11	+5V	12	+3.3V

1.4 <Driver Setting>

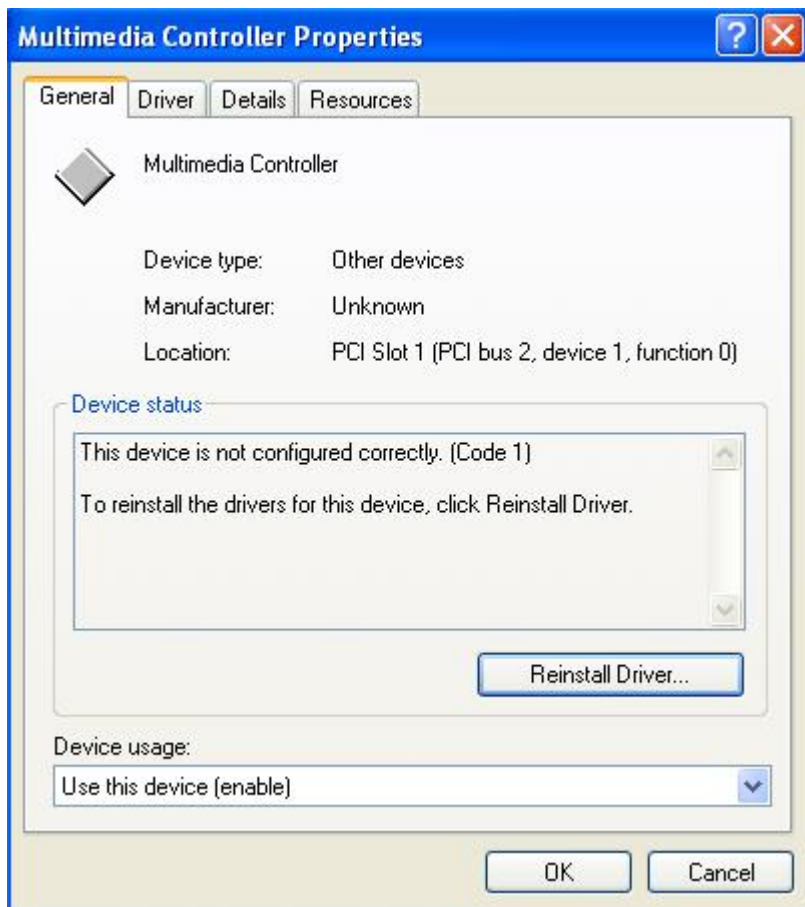
1. Please choose **Device Manager**



2. Then you can see **other devices**



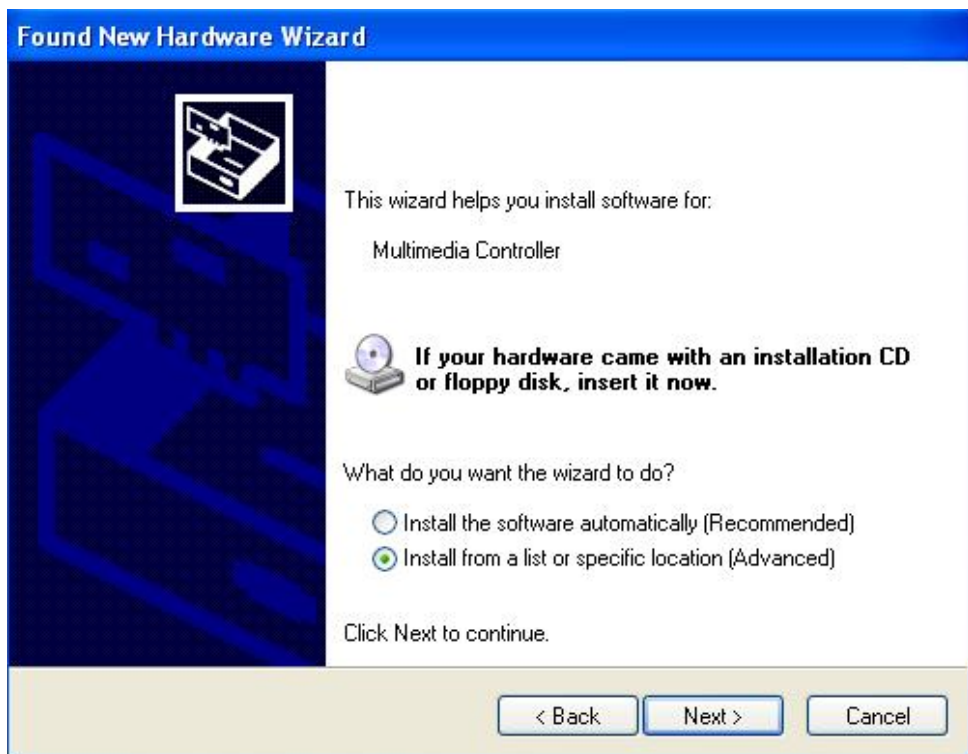
3. Please choose **Multimedia Controller** then press **Reinstall Driver**



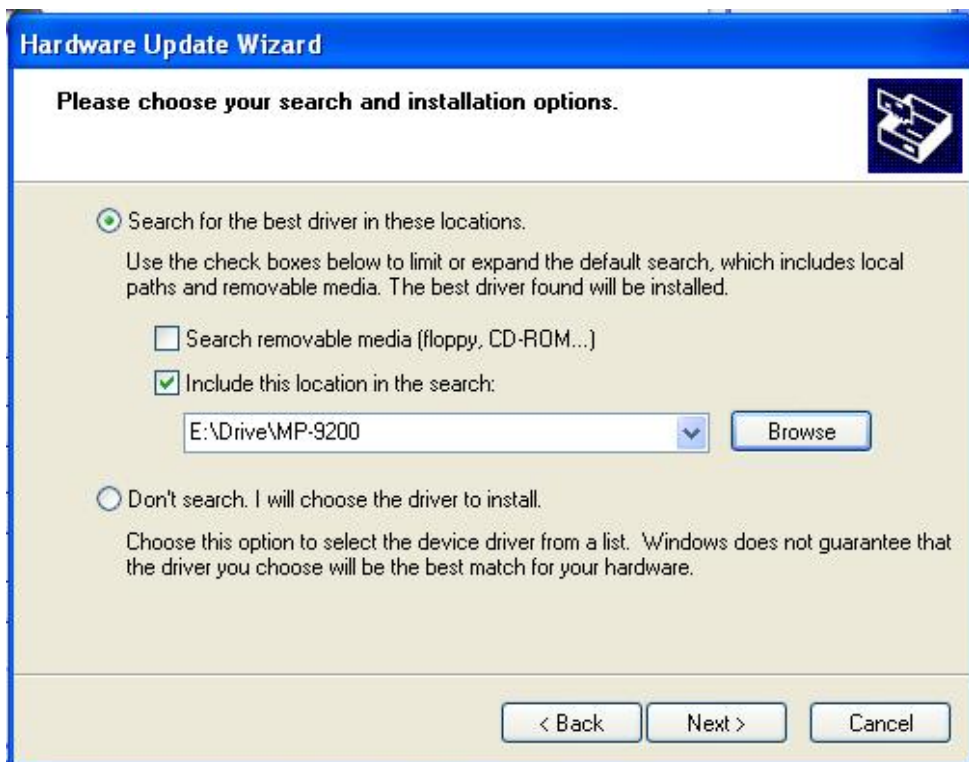
4. Please choose **NO** , not this time press next



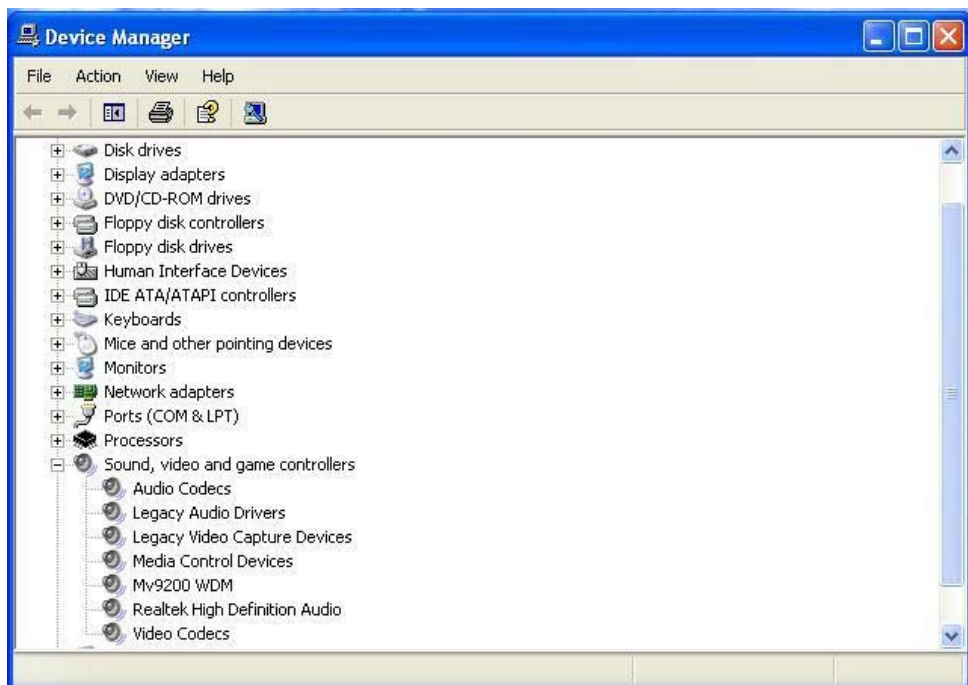
5. Please choose **Install from a list on specific Location**



6. Please select file location **E:\Driver\MP-9200** then press **OK**



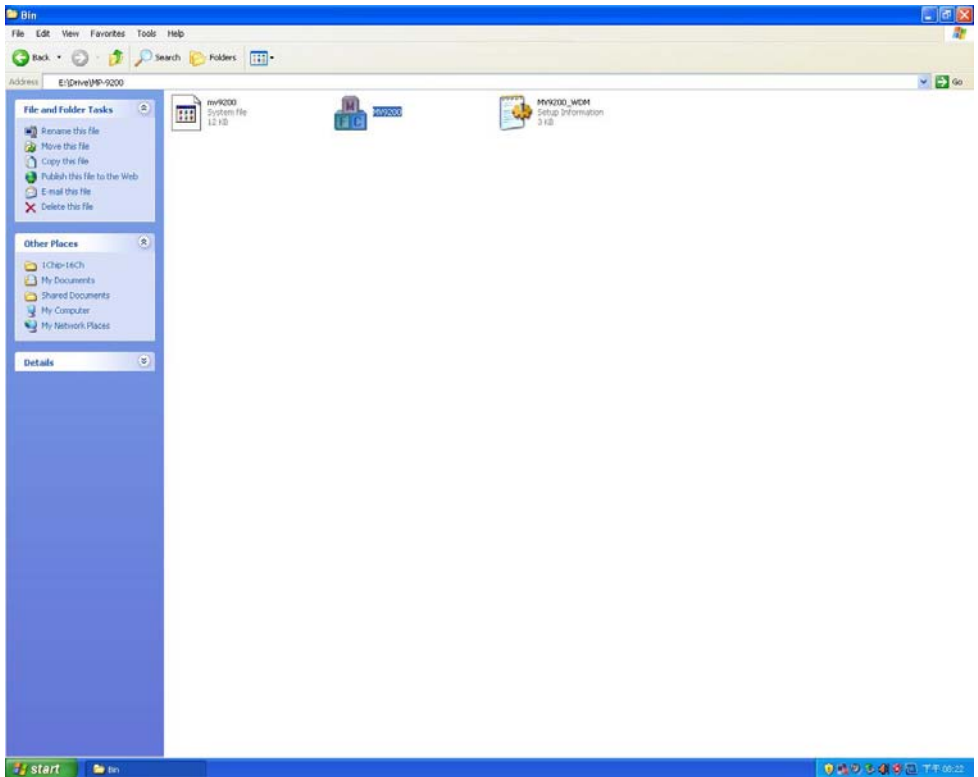
7. After driver install, please enter Device Manager then select **Mv9200 WDM** press properties.



<1.5> Sample Program:

1.5.1

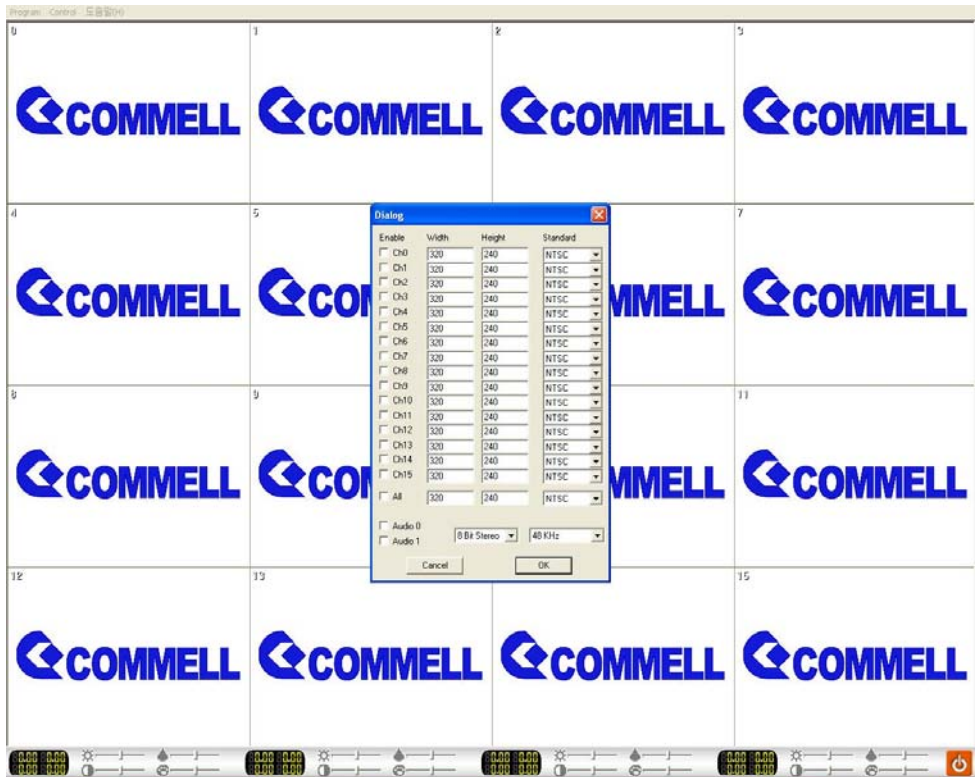
When you completed hardware & software installation, please find the “ MV9200
“ in the CD (Please set the Display 1280*1024)



1.5.2

Please double-click "MV9200", It'll pop up as following.

Then Please Push "Control" on the left-upper Menu.



You 'll get the video show.

Contact Information

Any advice or comment about our products and service, or anything we can help you please don't hesitate to contact with us. We will do our best to support you for your products, projects and business.

Taiwan Commate Computer Inc.

Address	8F, No. 94, Sec. 1, Shin Tai Wu Rd., Shi Chih Taipei Hsien, Taiwan
TEL	+886-2-26963909
FAX	+886-2-26963911
Website	http://www.commell.com.tw
E-Mail	info@commell.com.tw (General Information) tech@commell.com.tw (Technical Support)

Commell is the trademark of Taiwan Commate Computer INC.